



100 Wilberforce Road , Leicester, LE3 0GW Offers Over £160,000

Charming Two-Bedroom Bay-Fronted Terrace in a Sought-After Location

Situated in a popular area on the outskirts of Leicester city centre, this well-presented two-bedroom bay-fronted terraced home offers a perfect blend of character and modern convenience. Ideal for first-time buyers or investors, the property boasts spacious accommodation throughout.

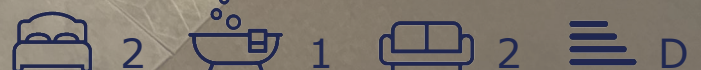
Upon entering, you are welcomed by two generously sized reception rooms, with the bay-fronted living room providing an abundance of natural light and a cosy yet stylish feel. The separate dining room offers a versatile space, perfect for entertaining or family dining. To the rear, a modern fitted kitchen features ample storage and workspace.

Upstairs, two spacious double bedrooms provide comfortable living, each with plenty of room for storage. The large family bathroom is well-appointed, offering both a bath and a separate shower, creating a bright and functional space.

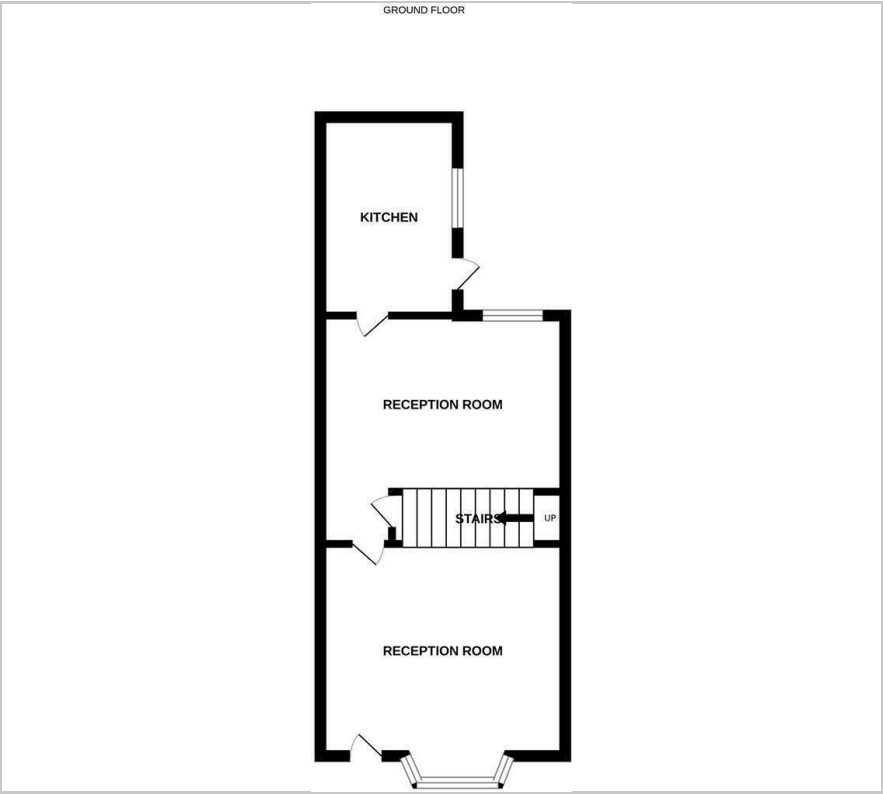
Externally, the property benefits from a low-maintenance rear courtyard garden, ideal for relaxing or outdoor dining. With excellent transport links, local amenities, and highly regarded schools nearby, this home offers a fantastic opportunity to acquire a stylish and well-located property.

Viewing

Please contact our Berkley Kibworth Office on 0116 2796161 if you wish to arrange a viewing appointment for this property or require further information.



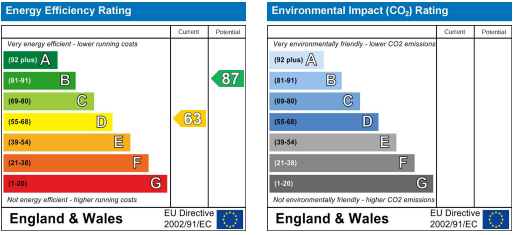
Floor Plan



Area Map



Energy Efficiency Graph



These particulars, whilst believed to be accurate are set out as a general outline only for guidance and do not constitute any part of an offer or contract. Intending purchasers should not rely on them as statements of representation of fact, but must satisfy themselves by inspection or otherwise as to their accuracy. No person in this firms employment has the authority to make or give any representation or warranty in respect of the property.