



8 DEEPDENE HOUSE, HOPEWOOD PARK DORKING, RH5 4GE

£1,250 PER MONTH

A FANTASTIC ONE DOUBLE BEDROOM GROUND FLOOR APARTMENT WITH PRIVATE ENTRANCE AND PATIO

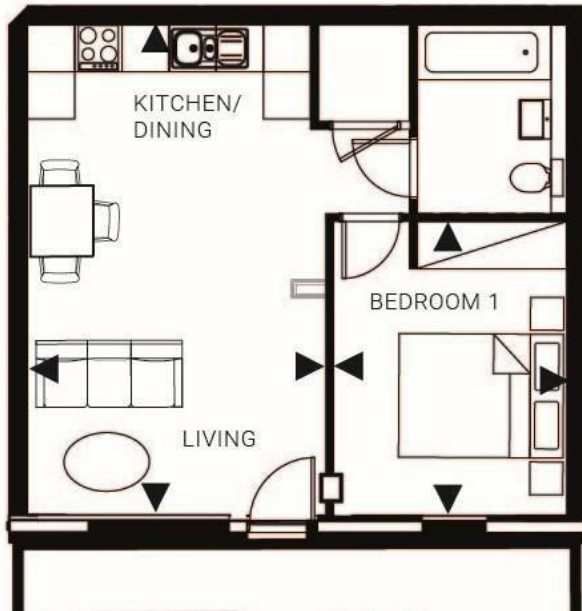
This rarely available ground floor apartment forms part of a highly sought-after development surrounded by attractive communal gardens.


The property offers well-presented open-plan living, featuring a contemporary fitted kitchen and modern bathroom with shower. Additional accommodation includes a spacious double bedroom. Further benefits include double glazing and allocated residents' parking.

Ideally located within walking distance of the train station and the centre of Dorking, the property enjoys easy access to a wide range of shops, cafés and restaurants.



TOOMEY
ESTATE AGENTS



Energy Efficiency Rating		
	Current	Potential
Very energy efficient - lower running costs		
(92 plus) A		
(81-91) B		
(69-80) C	69	69
(55-68) D		
(39-54) E		
(21-38) F		
(1-20) G		
Not energy efficient - higher running costs		
England & Wales	EU Directive 2002/91/EC 	

Agents Note: Whilst every care has been taken to prepare these particulars, they are for guidance purposes only. All measurements are approximate and are for general guidance purposes only and whilst every care has been taken to ensure their accuracy, they should not be relied upon and potential buyers/tenants are advised to recheck the measurements

Toomey Estate Agents Sales
 333a London Road
 Mitcham
 Surrey
 CR4 4BE

0208 715 9333
 enquiries@toomeyestateagents.co.uk
 www.toomeyestateagents.co.uk

