



17 Swallow Close, Staines-Upon-Thames, TW18 4RS

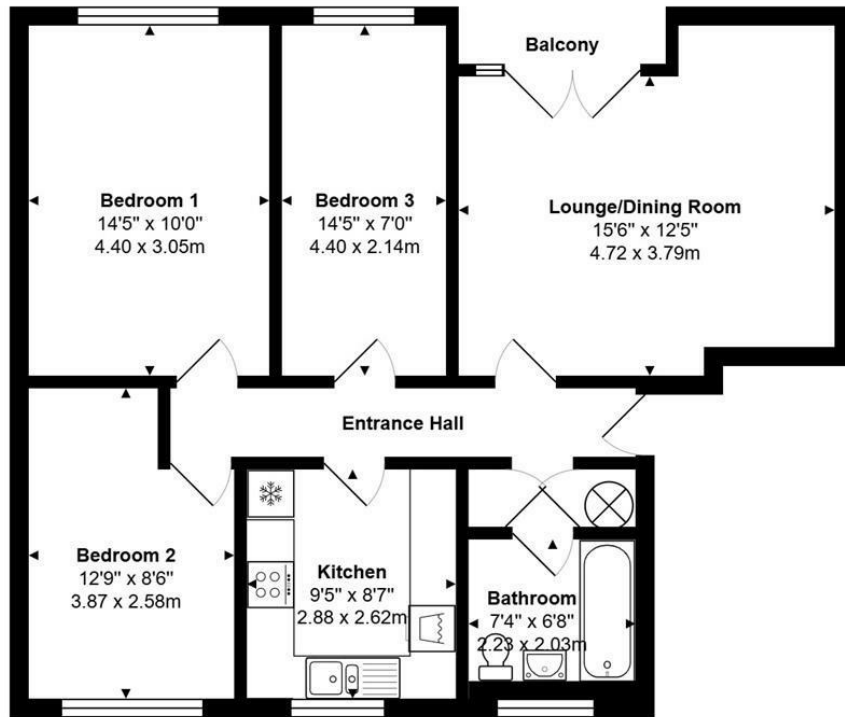
£300,000

17 Swallow Close, Staines-Upon-Thames, TW18 4RS

3 bedroom first floor apartment in this great position, centrally located within a fairly short walk of the main shops, Two Rivers and train station. The layout is superb, with all rooms approached from the central entrance hall. There is a good size lounge/diner with balcony, modern kitchen, bathroom with shower over bath and 2 double bedrooms and 1 large single bedroom. There is residents' parking available and a garage. There is no onward chain and would make a great FTB, downsize, or 'investment', with an expected rent in the region of £1,700pcm-£1,750pcm. Energy Rating C.



Floor Plan



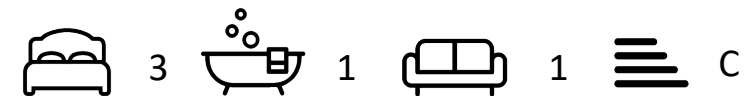
Total Area: 806 ft² ... 74.9 m²



Features

- First Floor Apartment
- Separate Modern Kitchen
- Recently Decorated Throughout
- Own Garage
- 10 Minute Walk to Shops
- Three Bedrooms
- White Bathroom Suite
- Permit Parking
- Long Lease
- 10 Minute Walk to Station

10 St Judes Road, Englefield Green, Surrey TW20 0BY
Tel 01784 433696
sales@aspenestateagents.co.uk



Tenure - Leasehold Council Tax Band - D

