



Guide Price
£250,000

Freehold

3x  1x  2x 

**Baden Road, Gillingham,
Kent, ME7**

OVER 60?

Secure this property
for up to **59% less!**

Wards
Helping you move forwards



Main features

- Third bedroom accessed via the second bedroom
- Renovated to a high standard
- Chain free
- Perfect home for a first time buyer or an investor looking for their next home
- Walking distance to Gillingham High Street and mainline stations

Accommodation

GROUND FLOOR

Lounge: 12'2 x 11'1 (3.71m x 3.38m)
 Dining Area: 12'2 x 10'3 (3.71m x 3.13m)
 Kitchen: 9'1 x 6'1 (2.77m x 1.86m)
 Bathroom

FIRST FLOOR

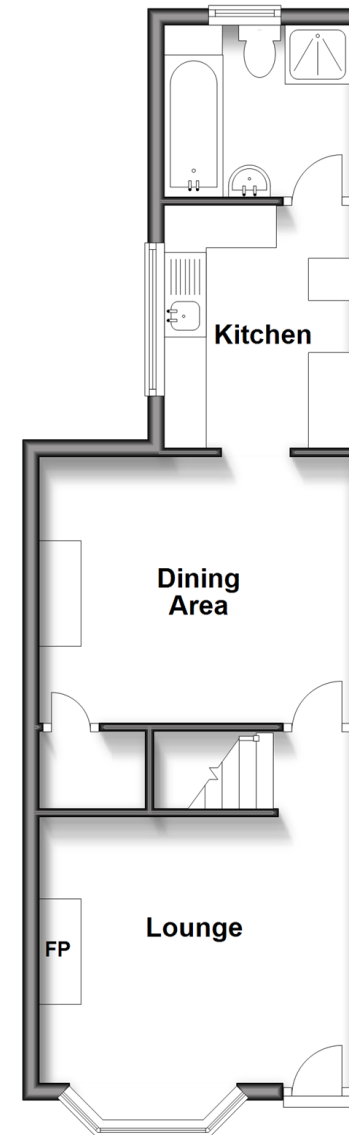
Landing
 Bedroom 1: 12'2 x 10'4 (3.71m x 3.15m)
 Bedroom 2: 12'2 x 10'4 (3.71m x 3.15m)
 Bedroom 3 (off bedroom 2): 10'3 x 7'3 (3.13m x 2.21m)

OUTSIDE

Front Garden
 Rear Garden

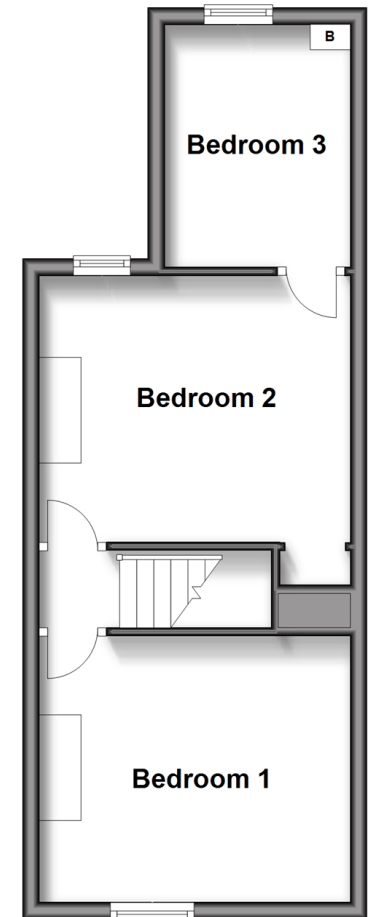
Ground Floor

Approx. 39.2 sq. metres (421.8 sq. feet)



Split Level First Floor

Approx. 34.2 sq. metres (367.9 sq. feet)



Call Gillingham - 01634 851191 ■ wardsofkent.co.uk

- Legal advice should be taken to verify fixtures/fittings, planning, alterations and/or lease details
- Appliances & services are untested, dimensions are approximate and floor plans are not to scale
- Through a Homewise Home For Life Plan people aged 60+ can secure this property for up to 50% less, by purchasing a Lifetime Lease.



10927374/20251007/HF/AC