



**Price**  
**£360,000**

**Freehold**

3x  2x  1x 

**Farleigh Heights, Tovil,  
Kent, ME15**

*Wards*  
Helping you move forwards



## Main features

- Immaculately presented throughout
- Allocated parking for 3 cars
- Situated within walking distance to local shops
- Private and secure rear garden
- Quiet cul-de-sac location

## Accommodation

### GROUND FLOOR

Entrance Hall

Cloakroom: 6'0 x 2'1 (1.83m x 0.64m)

Kitchen/Diner: 14'0 x 11'0 (4.27m x 3.36m)

Lounge: 20'1 x 14'0 (6.13m x 4.27m)

### FIRST FLOOR

Landing

Bedroom 2: 11'1 x 7'0 (3.38m x 2.14m)

Bedroom 1: 15'0 x 8'0 (4.58m x 2.44m)

En-Suite Shower Room: 7'0 x 3'1 (2.14m x 0.94m)

Bedroom 3: 10'0 x 6'0 (3.05m x 1.83m)

Bathroom: 9'0 x 6'0 (2.75m x 1.83m)

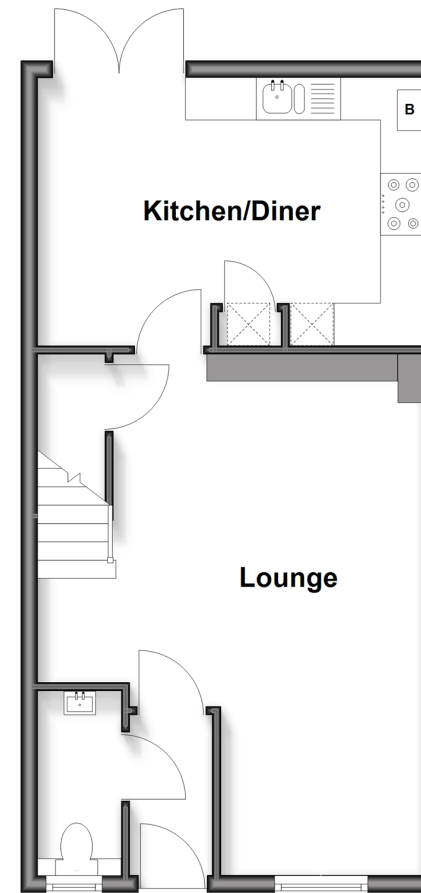
### OUTSIDE

Driveway

Rear Garden

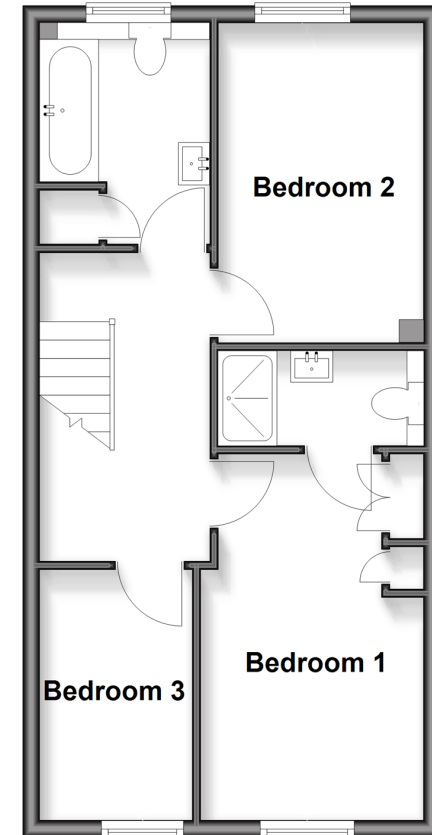
### Ground Floor

Approx. 42.9 sq. metres (461.6 sq. feet)



### First Floor

Approx. 42.9 sq. metres (461.6 sq. feet)



Call Maidstone - 01622 683737 ■ [wardsof Kent.co.uk](http://wardsof Kent.co.uk)



131019W7/20260402/SS1/AS