



*Jordan fishwick*

MANCHESTER  
Brighton Avenue



## Brighton Avenue, Manchester, M19 2JQ

£380,000



### The Property

A superb PERIOD SEMI DETACHED property offering BEAUTIFULLY PRESENTED living space throughout, with a convenient location, close to amenities and transport links, and a courtyard rear garden. The living space is warmed by gas central heating, which is further complemented by double glazing and boasts numerous noteworthy features including solid wooden flooring in the living room and period features throughout. The accommodation comprises: A generous entrance hall, bay fronted lounge, open plan kitchen/dining room with French doors leading to the rear courtyard, modern fitted kitchen with gloss cream doors, marble effect worktops over, and built-in appliances. To the first floor: Master bedroom with walk-in bay window and fitted wardrobes, two further generous bedrooms and a family bathroom with contemporary white suite and chrome fittings complete the impressive interior. Internal viewing is a must to fully appreciate this property.

### Directions

M19 2JQ



Map data ©2026 Google

- Period semi detached property
- Three sizeable bedrooms
- Bay fronted lounge
- Double glazing
- Gas central heating
- Modern fitted kitchen
- Quiet residential cul-de-sac
- Close to amenities
- NO CHAIN

Postcode - M19 2JQ

EPC Rating - E

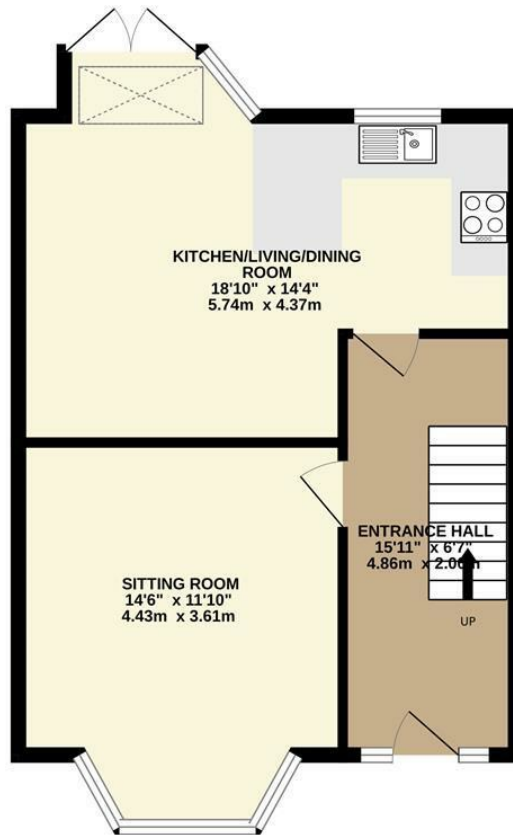
Floor Area - 963.00 sq ft

Local Authority - Manchester City Council

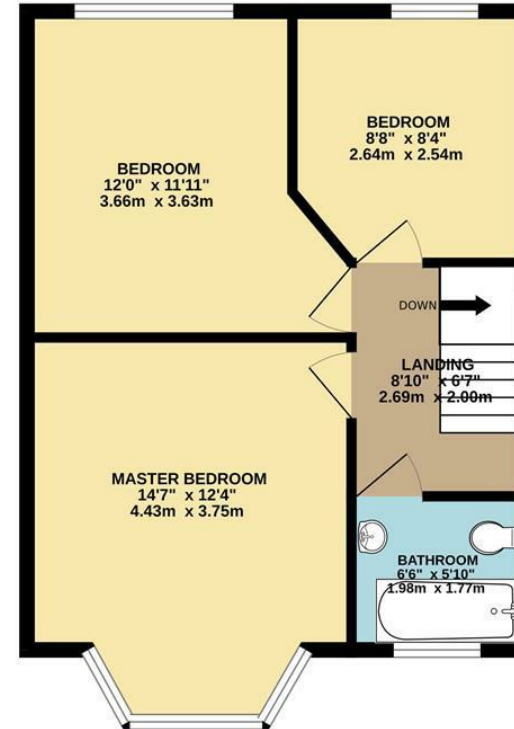
Council Tax - C



GROUND FLOOR  
489 sq.ft. (45.4 sq.m.) approx.



1ST FLOOR  
474 sq.ft. (44.0 sq.m.) approx.



TOTAL FLOOR AREA : 963 sq.ft. (89.4 sq.m.) approx.  
Measurements are approximate. Not to scale. Illustrative purposes only  
Made with Metropix ©2026



These particulars are believed to be accurate but they are not guaranteed and do not form a contract. Neither Jordan Fishwick nor the vendor or lessor accept any responsibility in respect of these particulars, which are not intended to be statements or representations of fact and any intending purchaser or lessee must satisfy himself by inspection or otherwise as to the correctness of each of the statements contained in these particulars. Any floorplans on this brochure are for illustrative purposes only and are not necessarily to scale.

Offices also at: Wilmslow, Macclesfield, Hale, Sale, Chorlton, Glossop, Manchester & Salford

757-759 Wilmslow Road, Didsbury Village, Manchester

0161 445 4480

didsbury@jordandfishwick.co.uk  
www.jordandfishwick.co.uk