



Linden Mews, W2

£1,500 Per week

Dexters



Linden Mews, W2

This newly refurbished three double bedroom house is arranged over two floors with a large semi open plan reception room and two bathrooms.

Within the gated development there is a large living room, a semi open plan kitchen and a separate WC on the ground floor of the property.

On the ground floor there is a garage which has been converted to a third bedroom/studio. On the first floor of the property there is two bedrooms, one of which has an ensuite bathroom.

The property is located on a quiet gated mews just off the Notting Hill Gate high street, ideal for easy access to Notting Hill Gate station and all the shops, bars and restaurants of Queensway.

Features

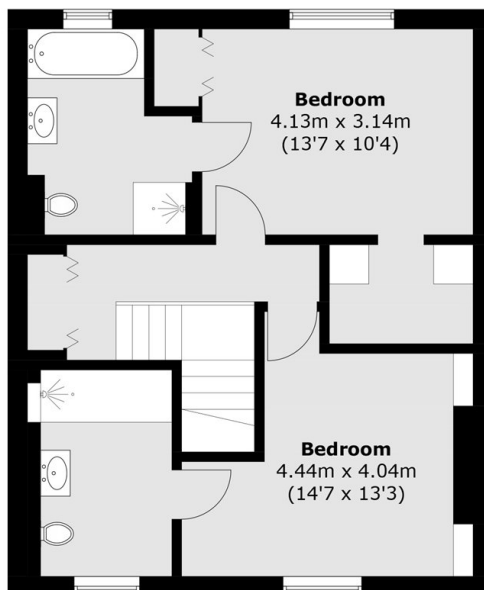
- Three Double Bedrooms
- Two Bathrooms
- Newly Refurbished
- Gated Mews
- Plenty Of Storage
- Wood Flooring



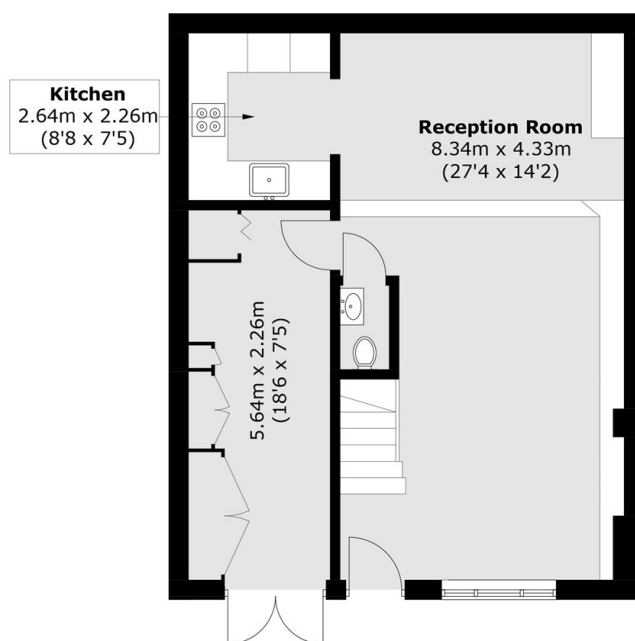




Linden Mews, London, W2



First Floor



Ground Floor

Total area (approx.): 112.0 sq. m (1,205.5 sq. ft)