



STYLISH SEMI-DETACHED FAMILY HOME with a 29FT OPEN PLAN LIVING SPACE, GENEROUS WEST FACING GARDENS, OFF STREET PARKING and OPEN ASPECT VIEWS! This semi-detached family home is ideally located on Dukes Meadow, Wooslington. Tucked just off The Oval, Dukes Meadow is a pleasant cul-de-sac close to Callerton Parkway Metro Station, offering excellent transport links into the city centre and beyond as well as the shops and amenities of Kingston Park which are also only a short drive away.

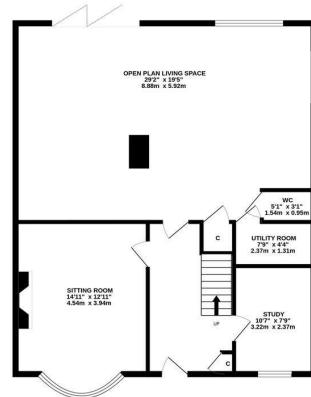
Boasting close to 2,200 Sq ft over three floors, the accommodation briefly comprises: entrance hall with stairs to first floor and storage cupboard; sitting room with walk in bay and feature wood burning stove; study; an impressive 29ft open plan living space with dual aspect windows, tiled flooring and bi-fold doors out to the gardens, kitchen area with a range of fitted units, work surfaces, integrated appliances, breakfasting island and spot lighting; downstairs WC; utility room. The split level first floor landing gives access to; four double bedrooms, bedroom two with a dressing room and access to an en-suite shower room with three piece suite and spot lighting; bedroom three with walk in bay and fitted wardrobe storage; bedroom four with dual windows; family bathroom complete with four piece suite including a free standing bath, step in shower and spot lighting. The second floor landing with storage gives access to both bright and airy full width bedroom with wardrobe storage cupboards and a shower room complete with three piece suite and double doors to Eaves storage.

Externally, a multi-vehicle driveway providing off-street parking, a lawned garden and planting. To the rear, extensive west facing gardens laid mainly to lawn with an array of mature planting including trees and shrubs, a patio seating area, feature bridge providing access to a second garden, again mature with planting. Early viewings are essential to appreciate this great home!

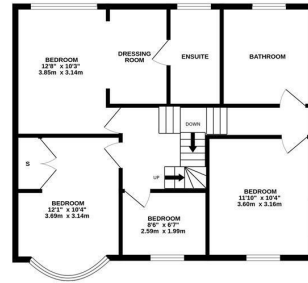
Stylish Semi-Detached Family Home | 2,161 Sq ft (200.8m²) | Five Bedrooms | Sitting Room | Impressive 29ft Open Plan Living Space | Study | Downstairs WC | Utility Room | Dressing Room & En-Suite to Bedroom Two | 1st Floor Family Bathroom | 2nd Floor Shower Room | Driveway & Front Garden | Extensive West Facing Rear Gardens | Cul-De-Sac Location | Freehold | Council Tax Band D | EPC: Tbc



GROUND FLOOR
997 sq.ft. (92.6 sq.m.) approx.



1ST FLOOR
727 sq.ft. (67.5 sq.m.) approx.



2ND FLOOR
437 sq.ft. (40.6 sq.m.) approx.



TOTAL FLOOR AREA: 2161 sq.ft. (200.8 sq.m.) approx.
Whilst every attempt has been made to ensure the accuracy of the floorplan contained here, measurements of doors, windows, rooms and any other items are approximate and no responsibility is taken for any error, omission or mis-statement. This plan is for illustrative purposes only and should be used as such by any prospective purchaser. The services, systems and appliances shown have not been tested and no guarantee as to their operability or efficiency can be given.
Made with Metropro ©2022.



Offers Over £495,000

IMPORTANT NOTE: These particulars and the descriptions and measurements herein do not constitute representation and whilst every effort has been made to ensure accuracy, this cannot be guaranteed.

