



St Pauls Court
Manchester Street, W1U

CHESTERTONS





PROFESSIONALLY MANAGED: Beautifully finished is this 5th floor (with a lift) apartment to rent conveniently situated to local amenities of Baker Street and Marylebone High Street.

Arranged over 1550 sq.ft. the property benefits from wood & marble flooring throughout and the accommodation comprises three double bedrooms (two en-suite bathrooms), a further modern bathroom, large reception room, fully integrated kitchen and utility room.

The property is well located for transport links in to the City and shopping amenities of Oxford Street

Our China Desk is here for you, if Chinese is your preferred language, please get in touch via WeChat (ChestertonsChinaDesk)

- Professionally managed
- Three bedroom and three bathrooms
- Utility Room
- Wood Marble flooring
- Lift
- Located Ideally to Baker Street and Marylebone

£6,600 pcm

Additional tenant charges apply (fees apply to non-AST tenancies only)

Tenancy Agreement Fee: £360

References per Tenant/Guarantor: £60

Inventory check (approx. £100 – £250 inc. VAT)

chestertons.co.uk/property-to-rent/applicable-fees

Energy Efficiency Rating		Current	Potential
100-109	A		
81-100	B		
62-81	C	70	72
43-62	D		
25-43	E		
10-25	F		
1-10	G		

Not energy efficient - higher running costs

England, Scotland & Wales EU Directive 2002/91/EC

Minimum Term: 12 months
Deposit Required: Five weeks
Local Authority: City of Westminster
Council Tax Band: H
EPC Rating: B
Furnished, Part Furnished, Unfurnished

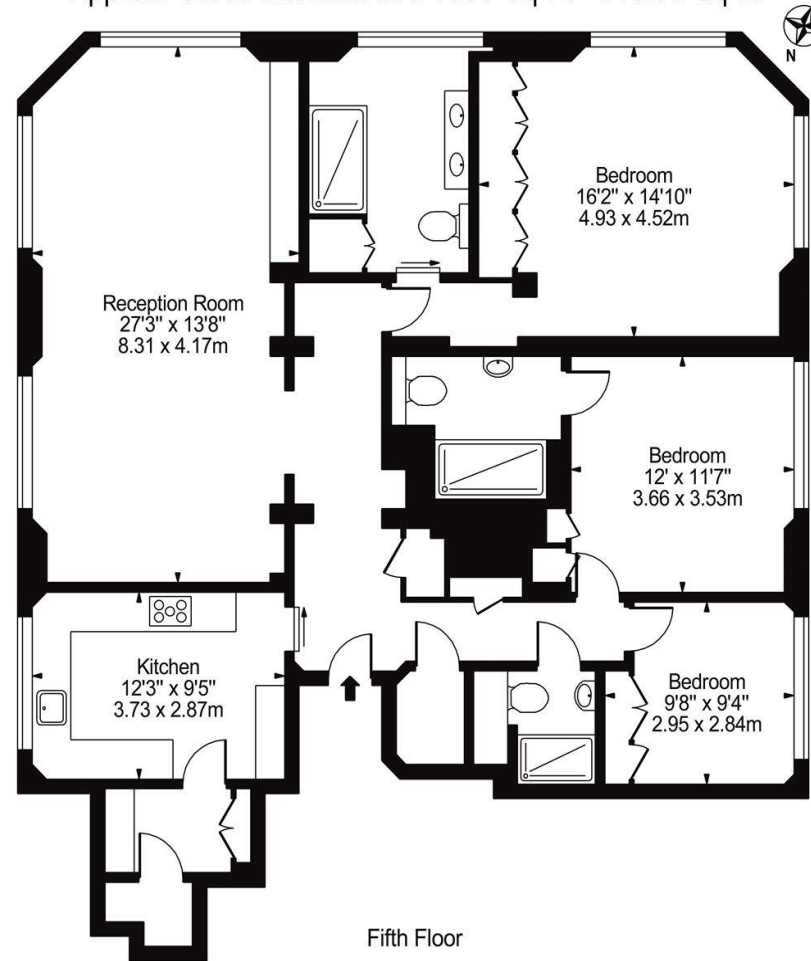
Chestertons Hyde Park & Marylebone Lettings

40 Connaught Street
 Hyde Park & Marylebone
 London
 W2 2AB

hydeparklettingsusers@chestertons.co.uk
 02072985950

Manchester Street, W1

Approx. Gross Internal Area 1550 Sq Ft - 143.99 Sq M



Fifth Floor
For Illustration Purposes Only - Not To Scale

This floor plan should be used as a general outline for guidance only and does not constitute in whole or in part an offer or contract. Any intending purchaser or lessee should satisfy themselves by inspection, searches, enquiries and full survey as to the correctness of each statement. Any areas, measurements or distances quoted are approximate and should not be used to value a property or be the basis of any sale or let.

Chesterton UK Services Limited trading as Chestertons for themselves and for the vendor of this property whose agents they are, give notice that (i) these particulars do not constitute any part of an offer or contract, (ii) all statements contained within these particulars are made without responsibility on the part of Chestertons or the vendor, (iii) whilst made in good faith, none of the statements contained within these particulars are to be relied upon as a statement or representation of fact, (iv) any intending purchasers must satisfy themselves by inspection or otherwise as to the correctness of each of the statements contained within these particulars, (v) the vendor does not make or give either Chestertons or any person in their employment any authority to make or give representation or warranty whatsoever in relation to this property. Wide angle lenses may be used. ©Copyright Chestertons | Chesterton Global Ltd | Registered Office 40 Connaught Street, Hyde Park, London W2 2AB Registered Company Number 05334580.



This paper is
100% recyclable