



**Victoria Bolt**  
estate agents POWERED BY **exp** UK

# Westfield, Plympton

Offers Over £220,000

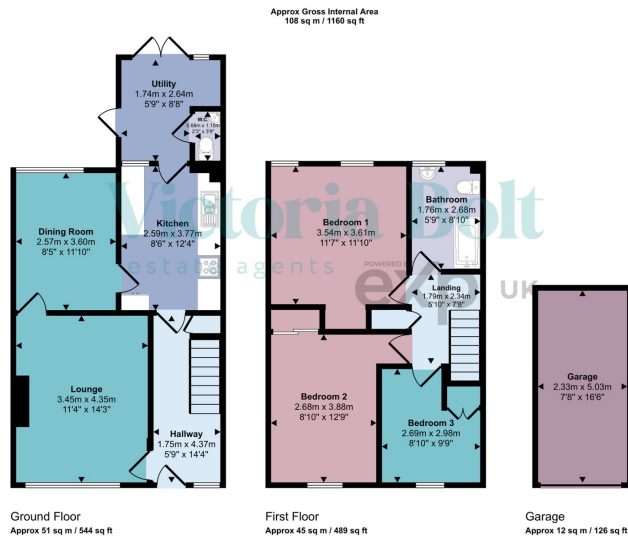
🛏️ 3 🚿 2 🚗 2



- Three well-proportioned bedrooms
- Potential to create open-plan kitchen/dining area
- Downstairs WC
- Single garage in a nearby block
- Ideal first-time buy or step-up home
- Two reception rooms offering flexible living space
- Rear extension with utility room
- Family bathroom on the first floor
- Parking available in front of the garage
- Popular Westfield location in Plympton



Situated in the popular Westfield area of Plympton, this three-bedroom home offers an excellent opportunity for first-time buyers or those looking to upsize. Priced at offers over £220,000, the property provides well-balanced accommodation including two reception rooms, a rear extension with utility and WC, and a single garage. With scope to reconfigure into an open-plan kitchen/diner, this home presents fantastic potential to personalise and create a modern living space, all within easy reach of local amenities



This floorplan is only for illustrative purposes and is not to scale. Measurements of rooms, doors, windows, and any items are approximate and no responsibility is taken for any error, omission or mis-statement. Icons of items such as bathroom suites are representations only and may not look like the real items. Made with Made Snappy 360.

Score	Energy rating	Current	Potential
92+	A		
81-91	B		83 B
69-80	C		
55-68	D	59 D	
39-54	E		
21-38	F		
1-20	G		