

Kingsway, WC2B

£825 Per week

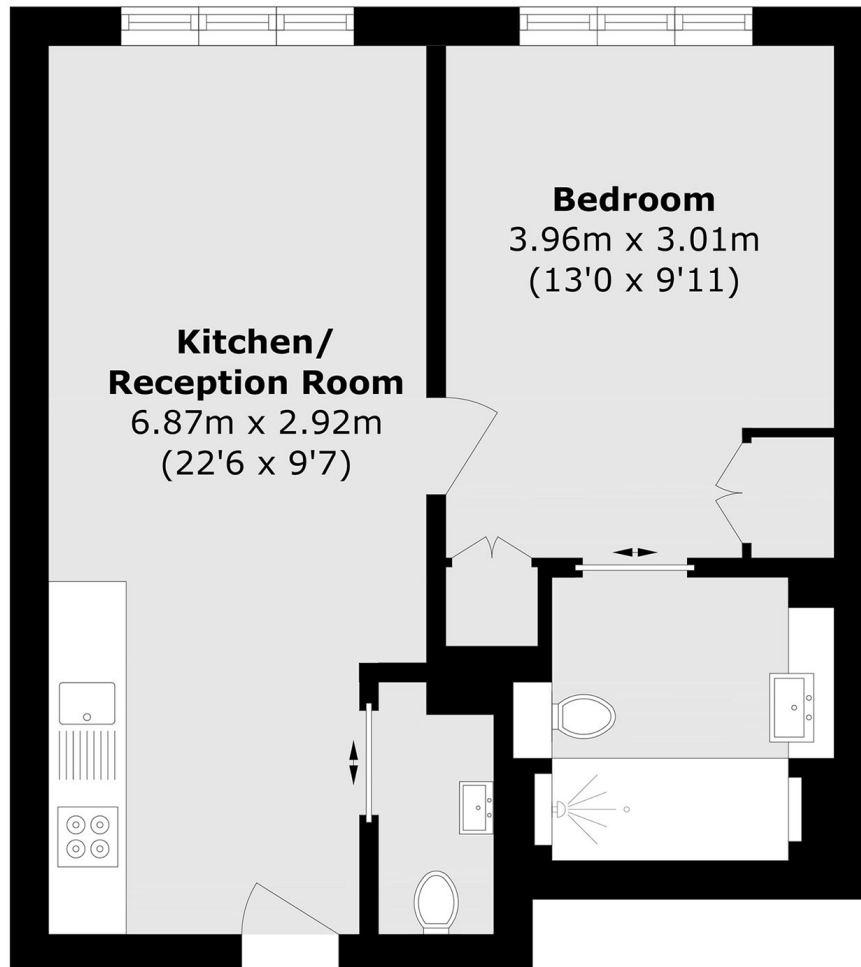
A newly renovated one double bedroom apartment on the fifth floor of this new portered development. The building retains its 1920's stone facade and is perfect for those looking for both style and character.

Princes House is a located on Kingsway with it s wide variety of shops, bars and eateries. Close to the Theatre district and Covent Garden Piazza.

Features

- New Development
- Concierge
- Fifth Floor With Lift
- Wooden Floors
- Open Plan Kitchen
- New Furniture

Kingsway, London, WC2B



Fifth floor

Total area (approx.): 40.2 sq. m (432.7 sq. ft)