



Bathurst Gardens, Kensal Rise

London NW10

£1,750,000



Bathurst Gardens

Kensal Rise, London NW10

Stunning 4 bed / 2 bath Edwardian house of 2,000sq ft fully extended in the heart of Kensal Rise NW10.

Council Tax band: E

Tenure: Freehold

EPC Energy Efficiency Rating: C

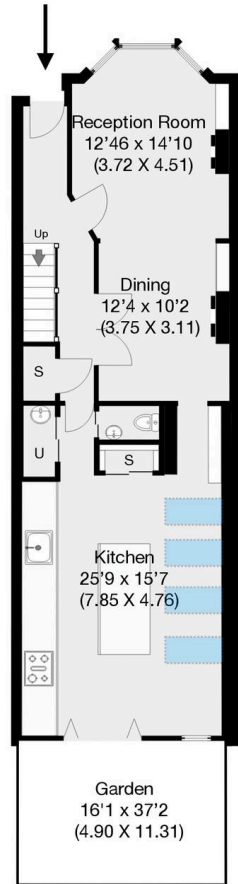
EPC Environmental Impact Rating: G



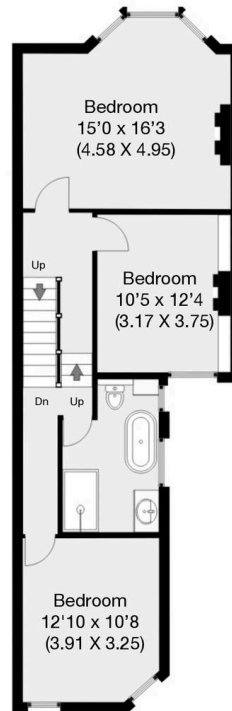


Bathurst Garden, London, NW10

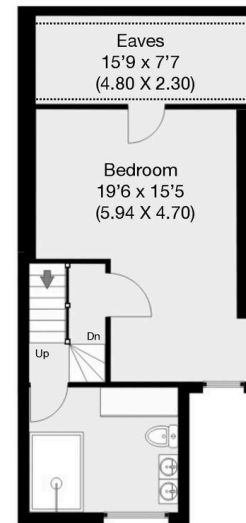
Approximate Gross Internal Area (With Restricted Areas) 189.57 sqm / 2040 sqft
Approximate Gross Internal Area (Without Restricted Areas) 178.16 sqm / 1917 sqft



Ground Floor



First Floor



Second Floor

THIS FLOOR PLAN IS PRODUCED FOR GARRISON ESTATES SUBMITTED BY ARCHIMEDIA web: www.archi-media.co.uk

Whilst every attempt has been made to ensure the accuracy of the floor plan contained here, measurements of doors, windows and rooms are approximate and no responsibility is taken for any error, omission or misstatement. These plans are for representation purposes only and should be used as such by any prospective buyer or lease. Specifically no guarantee is given on the gross internal floor area of the property if quoted on this plan and any figures given is initial guidance only and should be treated as such.



Garrison Estates

20 College Parade, Salusbury Road, Queens Park - NW6 6RN

020 4511 4820 • contact@garrisonestates.co.uk • www.garrisonestates.co.uk/