



Third Floor Flat 3

Warrington Crescent | Maida Vale | London | W9 1ED

£800,000

PARK & VALE
sales | lettings | management

Third Floor Flat 3

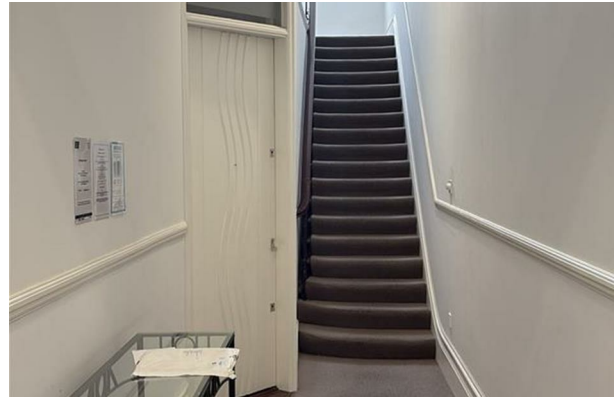
Warrington Crescent | Maida Vale

London | W9 1ED

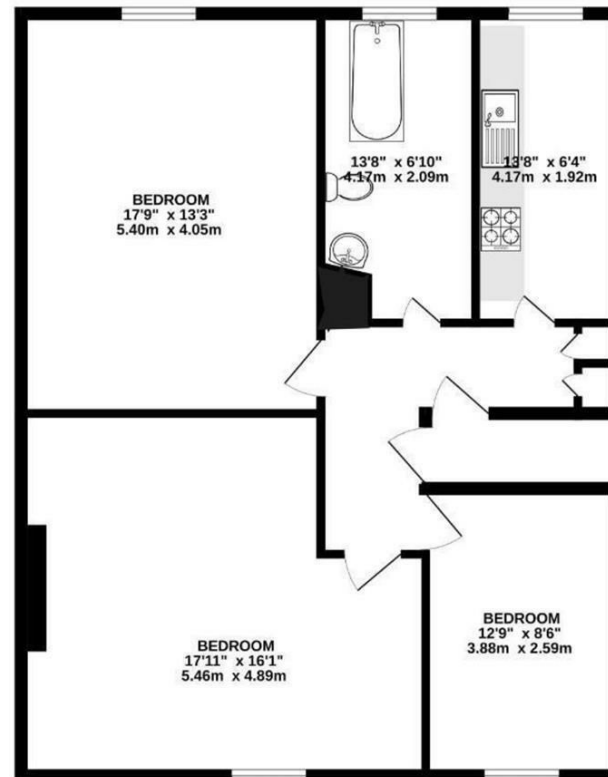
£800,000

Nestled in the charming area of Warrington Crescent, Maida Vale, this delightful two-bedroom flat offers a unique opportunity for those seeking a property with great potential. Housed within a conversion dating back to the early 1900s, this residence boasts a generous 860 square feet of living space, providing ample room for both relaxation and creativity.

As you enter, you will find a spacious reception room that serves as the heart of the home, perfect for entertaining guests or enjoying quiet evenings. The two well-proportioned bedrooms offer comfortable retreats, while the bathroom is conveniently located to serve both rooms. The flat presents a blank canvas, allowing you to tailor the interiors to your personal taste and style, making it an ideal project for those looking to invest in a property that can be transformed into their dream home.



THIRD FLOOR
860 sq.ft. (79.9 sq.m.) approx.



Energy Efficiency Rating		
	Current	Potential
Very energy efficient - lower running costs		
(92 plus) A		
(81-91) B		
(69-80) C		
(55-68) D		
(39-54) E	45	
(21-38) F		
(1-20) G		
Not energy efficient - higher running costs		
England & Wales		EU Directive 2002/91/EC

- Long lease
- Close links to Bakerloo Line
- Close to Little Venice
- Part of Maida Vale Conservation area
- Excellent location
- Next to local amenities
- Highly desirable street
- Blank canvas

241 Maida Vale
London
W9 1QJ
0207 112 8323
info@parkandvale.co.uk