



MILES ESTATE AGENTS

**11 Manning Road Cotford St. Luke
Taunton TA4 1NY £190,000**



A 2 double bedroom modern terraced house immediately available with NO ONWARD CHAIN in this ever popular village 5 miles North West of Taunton. Good size sitting room with brand new carpets, lovely enclosed garden, single garage and parking. Early viewing recommended. Freehold Council Tax Band B EPC : C.





Features:

- Entrance hall
- Kitchen
- Good size sitting room
- Useful cloakroom
- 2 double bedrooms
- Bathroom
- Lovely enclosed garden with rear access
- Single garage & parking
- NO ONWARD CHAIN
- Freehold
- Council Tax Band B
- EPC : C



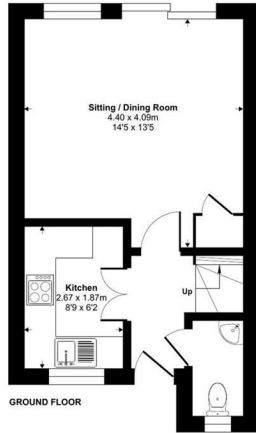
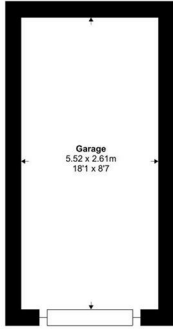
Manning Road, Cotford St. Luke, Taunton, TA4

Approximate Area = 601 sq ft / 55.8 sq m

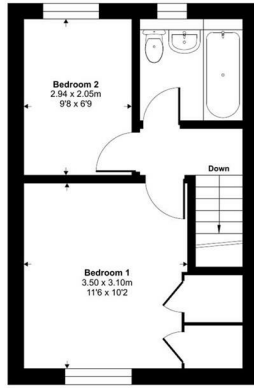
Garage = 155 sq ft / 14.3 sq m

Total = 756 sq ft / 70.1 sq m

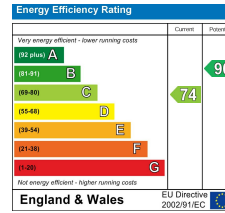
For identification only - Not to scale



GROUND FLOOR



FIRST FLOOR



ⓘ Floor plan produced in accordance with RICS Property Measurement 2nd Edition, incorporating International Property Measurement Standards (IPMS Residential). Produced for Miles Alexander Limited T/A Miles Estate Agents. REF: 1417623. ©nichicom 2016.



Viewings strictly through the selling agents:

Miles Estate Agents

2 Piffin Lane, Bishops Lydeard, Taunton, Somerset, TA4 3AS

Tel: 01823 470 500

lydeard@milesestateagents.co.uk

www.milesestateagents.co.uk

rightmove

OnTheMarket.com

MILES ESTATE AGENTS

