



Grosvenor Road, W4 £575,000

A well-presented first-floor, two bedroom period conversion set on a highly regarded and sought-after road. With long lease, communal garden and offered with no onward chain.

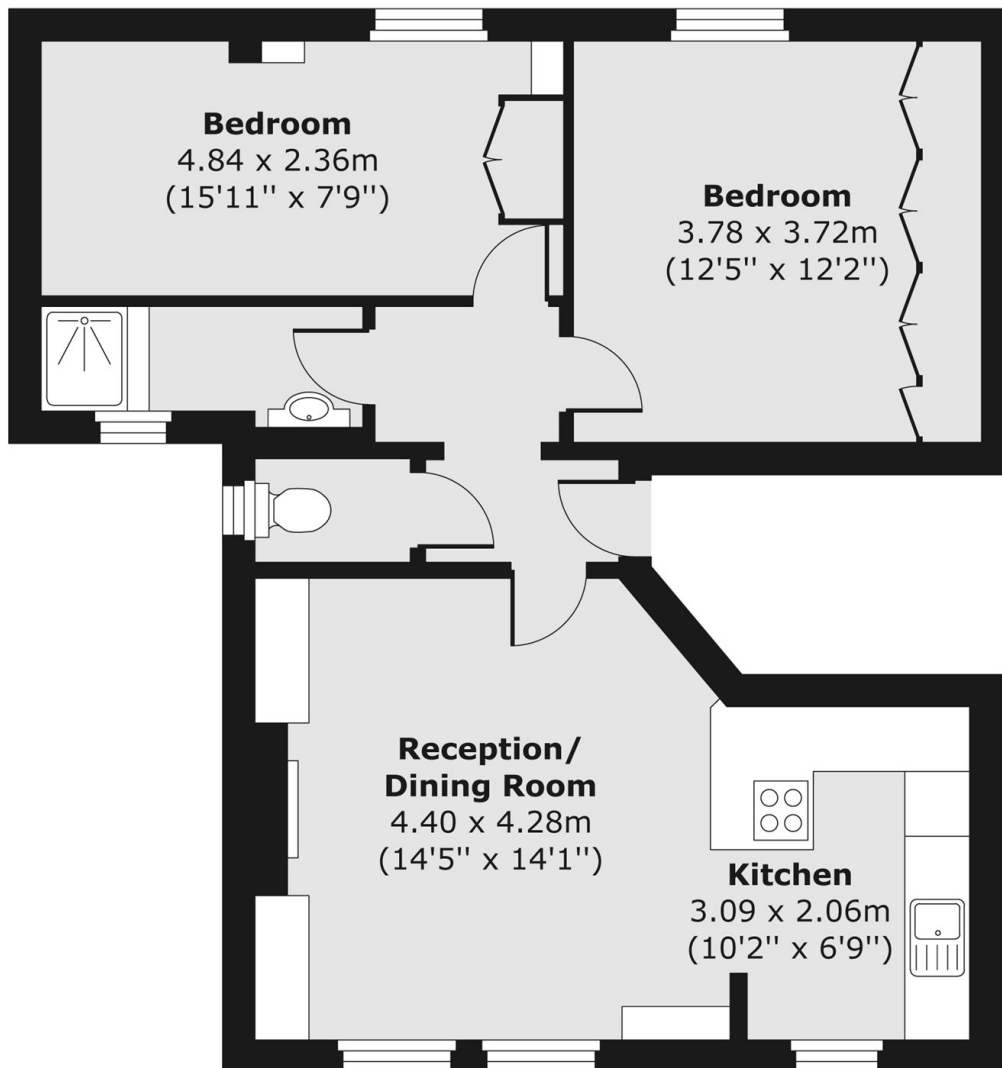
Grosvenor Road is a short walk to the river, a number of local parks and the extensive shopping and restaurant facilities on Chiswick High Road. Transport links include Gunnersbury and Chiswick Park stations, local bus routes and the A4/M4 for routes in and out of London.

Features

- Two Bedrooms
- First Floor
- Communal Garden
- Long Lease
- Central Location
- No Onward Chain

Grosvenor Road,
London, W4

First Floor



Total area (approx.) 61.13 sq. m (658 sq. ft)

Dexters

Chiswick
388 Chiswick High Road
London
W4 5TF
Sales
020 8995 4321

Energy Rating: . We aim to make our particulars both accurate and reliable. However they are not guaranteed; nor do they form part of an offer or contract. If you require clarification on any points then please contact us, especially if you're traveling some distance to view. Please note that appliances and heating systems have not been tested and therefore no warranties can be given as to their good working order.

 **RICS** | Regulated
Estate Agent
and Letting Agent

dexters.co.uk