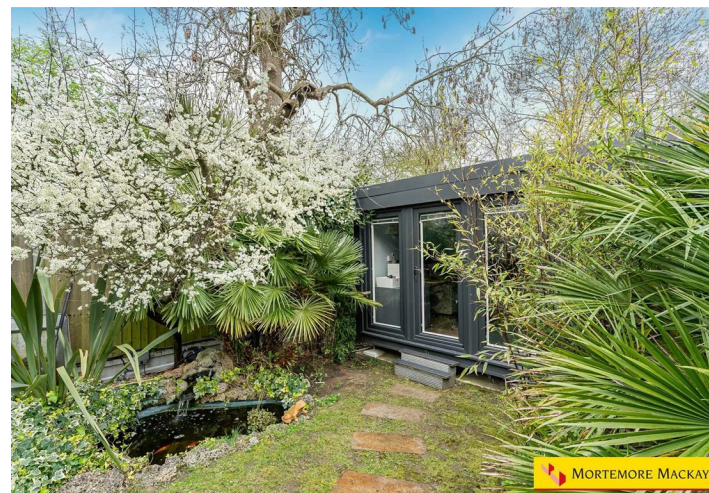




MACLEOD ROAD, N21 1SN



£775,000 Freehold

- EXTENDED DETACHED HOUSE
- TWO BATHROOMS
- MODERN FITTED KITCHEN AND DINING AREA
- UTILITY ROOM
- GARDEN OFFICE
- THREE BEDROOMS
- TWO RECEPTION ROOMS
- DOWNSTAIRS WC
- PRIVATE REAR GARDEN
- GARAGE AND DRIVEWAY

Property Details

Placed on the charming Macleod Road in London, N21 this exquisite detached house offers a perfect blend of modern living and comfort. Located within the desirable Highlands Village, residents will enjoy convenient access to local amenities, including a Sainsbury's, a doctor's surgery, a pharmacy, and a nursery. The property is also in close proximity to well-regarded primary and secondary schools, making it an ideal choice for families.

Upon entering, you are greeted by a spacious hallway that leads to two inviting reception rooms. One of these rooms features elegant doors that open onto the garden, creating a seamless connection between indoor and outdoor spaces. The heart of the home is undoubtedly the stunning extension, which boasts a contemporary German fitted kitchen. This area flows into a dining space adorned with a full glass wall, offering picturesque views of the beautifully landscaped garden. Additionally, the ground floor includes a practical utility room and a convenient downstairs WC.

The first floor comprises three well-proportioned bedrooms, with the principal suite benefiting from its own ensuite shower room. A family bathroom serves the other two bedrooms, ensuring ample facilities for all.

Externally, the property features a driveway providing off-street parking, leading to a garage for added convenience. The rear garden is a true oasis, featuring a decked area that grants access to the garage and a stunning landscaped garden. A garden office, complete with air conditioning, offers a perfect space for work or leisure. The house is also equipped with air conditioning, ensuring comfort in all seasons. An added benefit of this property is the presence of solar panels, promoting energy efficiency with 4kwh of solar panels and a 9.5kwh battery.

This remarkable home on Macleod Road is a rare find, combining modern amenities with a tranquil setting, making it a must-see for discerning buyers.



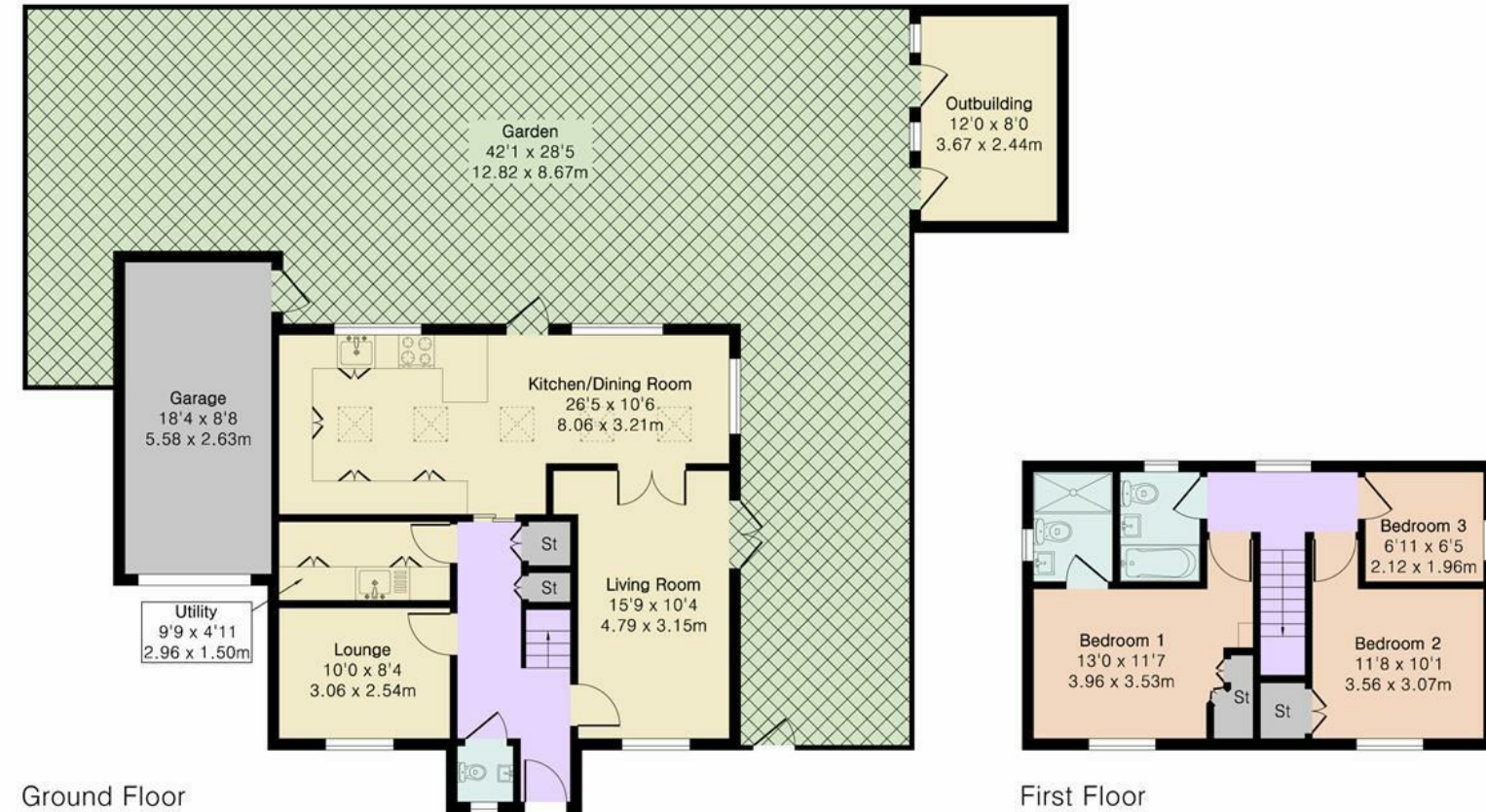
Approximate Gross Internal Area 1065 sq ft - 98 sq m (Excluding Garage & Outbuilding)

Ground Floor Area 651 sq ft – 60 sq m

First Floor Area 414 sq ft – 38 sq m

Garage Area 158 sq ft – 15 sq m

Outbuilding Area 96 sq ft – 9 sq m



Floor plan produced in accordance with RICS Property Measurement 2nd Edition. Although Pink Plan Ltd ensures the highest level of accuracy, measurements of doors, windows and rooms are approximate and no responsibility is taken for error, omission or misstatement. These plans are for representation purposes only and no guarantee is given on the total square footage of the property within this plan. The figure icon is for initial guidance only and should not be relied on as a basis of valuation.



Energy Efficiency Rating		Current	Potential
Very energy efficient - lower running costs			
(92 plus) A		91	91
(81-91) B			
(69-80) C			
(55-68) D			
(39-54) E			
(21-38) F			
(1-20) G			
Not energy efficient - higher running costs			
England & Wales		EU Directive 2002/91/EC	

