



30 Longmead, Windsor, SL4 5PZ
£525,000

 **HORLER**

30 Longmead, Windsor, SL4 5PZ

This three-bedroom semi-detached home in Longmead, Windsor offers spacious and comfortable family living. It features an open-plan living and dining area, a separate reception room, and direct access to a large rear garden with a patio and mature shrubs. Additional benefits include driveway parking and a garage. Located close to well-regarded schools, local amenities, recreational grounds, and transport links, the property is ideally suited to families seeking a convenient and well-connected location.



Property Summary

Located in the charming area of Longmead, Windsor, this delightful semi-detached house offers a perfect blend of comfort and convenience. With three well-proportioned bedrooms, this property is ideal for families or those seeking extra space. The heart of the home features an open-plan living and dining room, creating a warm and inviting atmosphere, perfect for entertaining or relaxing with loved ones.

In addition to the main living area, there is a separate reception room that opens directly onto a large rear garden. This outdoor space is a true gem, boasting a patio area and mature shrubs, providing a serene retreat for gardening enthusiasts or those who simply wish to enjoy the fresh air.

The property also benefits from driveway parking and a garage, ensuring ample space for vehicles and storage. Longmead is known for its excellent local amenities, including some of the area's finest schools, making it an attractive location for families. Furthermore, the nearby recreational grounds offer opportunities for outdoor activities, while convenient transport links ensure easy access to surrounding areas.

This semi-detached house in Longmead is not just a home; it is a lifestyle choice that combines comfort, space, and a vibrant community. Do not miss the opportunity to make this wonderful property your own.

General Information

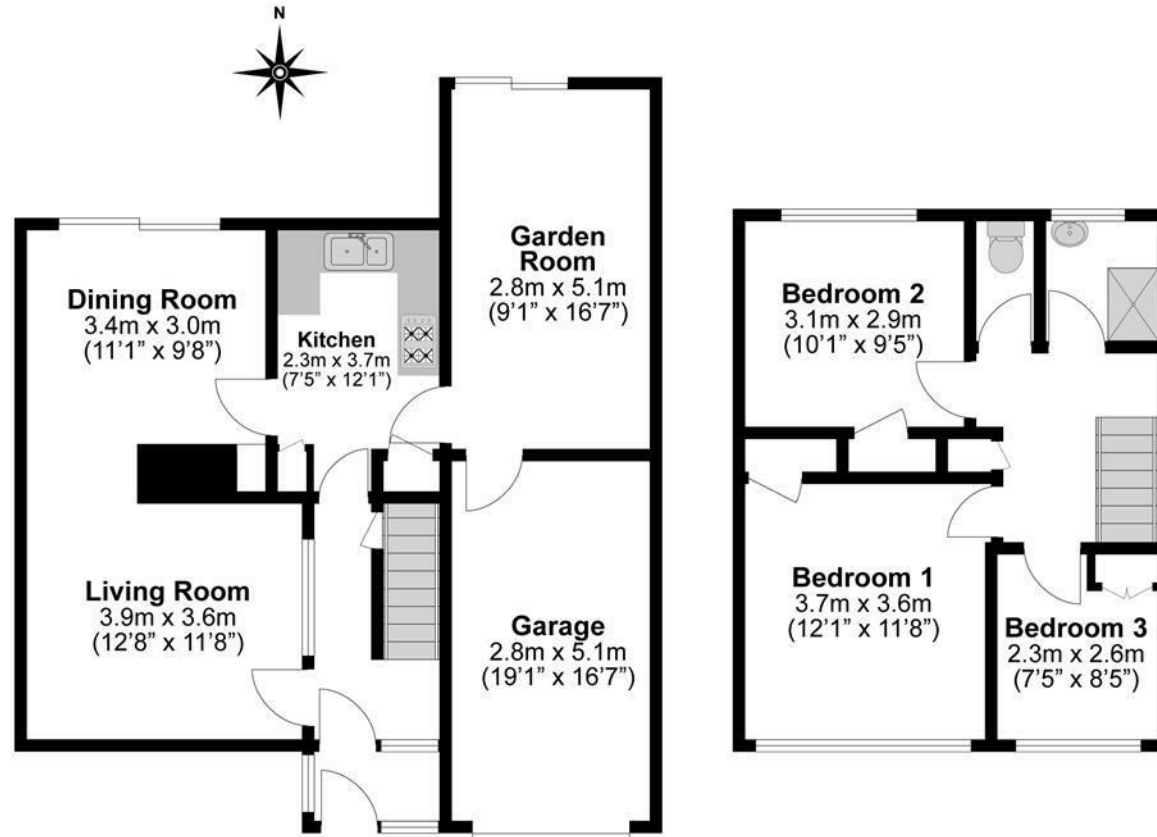
Council Tax band 'E'

Legal Note

Although these particulars are thought to be materially correct their accuracy cannot be guaranteed and they do not form part of any contract







**Illustrations are for identification purposes only,
measurements are approximate, not to scale.**