



3 Bedroom Semi Detached Home

CHECK OUT this modern semi-detached HOME in Cranbrook with 3 bedrooms, living room, separate kitchen/dining room, bathroom and en-suite shower room. This property is beautifully presented with lots of space and natural light, benefiting from a rear garden, two parking spaces and only a short distance from the town centre and shops.

4 Barley Road | Exeter | EX5 7HR





PROPERTY TYPE

Semi-Detached House



SIZE

736 sq ft



LOCATION

Cranbrook



AGE

Modern



BEDROOMS

3



RECEPTION ROOMS

1



BATHROOMS

2



WARMTH

EON District Heating System



PARKING

Off Road Parking



OUTSIDE SPACE

Garden, Patio



EPC RATING

83 B



COUNCIL TAX BAND

C



complete.

in a nutshell...

- Kitchen Dining Room
- Living Room
- Master Bedroom With En-Suite
- Downstairs WC
- 2 Allocated Parking Spaces
- Landscaped Rear Garden
- Ideal First Home
- Local Town Centre & Supermarket
- Easy access to M5, Exeter & A30



complete.



the details...

A neatly maintained pathway leads to the front door, opening into a welcoming entrance hallway. Here, a ground-floor cloakroom offers convenience, complete with a WC and corner basin. A carpeted staircase rises to the first floor, while the interior showcases fresh décor throughout, creating a bright, modern, and inviting atmosphere.

To the left, a door opens into a well-proportioned living room, bathed in natural light from a front-facing window. A useful under-stairs cupboard provides additional storage, while another door leads into the spacious kitchen/dining room.

This area enjoys an abundance of light from both a window and French doors that open directly onto the garden. The kitchen boasts ample worktop space and a sleek range of white fitted units, complemented by matching wall cabinets for generous storage. Integrated appliances include an electric oven, ceramic hob and space for a fridge/freezer and washing machine. With plenty of room for a dining table and seamless access to the garden, this space is ideal for both everyday living and entertaining



what the owner loves most...

This property has been an excellent starter home for our family with everything you need in close proximity

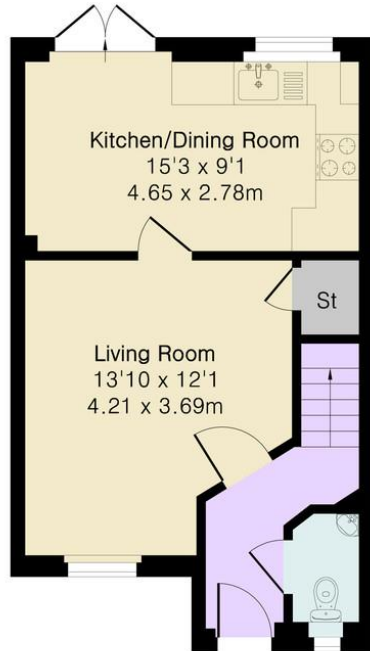


the floorplan...

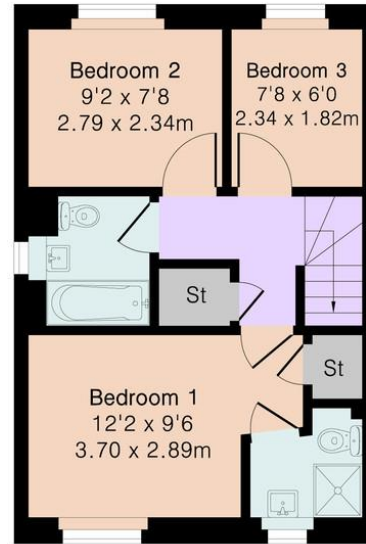
Approximate Gross Internal Area 736 sq ft - 68 sq m

Ground Floor Area 380 sq ft – 35 sq m

First Floor Area 356 sq ft – 33 sq m



Ground Floor



First Floor



Floor plan produced in accordance with RICS Property Measurement 2nd Edition. Although Pink Plan Ltd ensures the highest level of accuracy, measurements of doors, windows and rooms are approximate and no responsibility is taken for error, omission or misstatement. These plans are for representation purposes only and no guarantee is given on the total square footage of the property within this plan. The figure icon is for initial guidance only and should not be relied on as a basis of valuation.

complete.

Our note. For clarification we have prepared these sales particulars as a general guide and have not carried out a detailed survey nor tested the services, appliances or fittings. Room sizes should not be relied upon for carpets or furnishings. If there are any important matters which are likely to affect your decision to buy, please contact us before viewing this property. These particulars, whilst believed to be accurate, are set out as a general outline only for guidance and do not constitute any part of an offer or contract. Intending purchasers should not rely on them as statements of representation of fact, but must satisfy themselves by inspection or otherwise as to their accuracy. No person in the employment of Complete Property Services has the authority to make or give any representation or warranty in respect of the property.

SKETCH PLAN FOR ILLUSTRATIVE PURPOSES ONLY. All measurements and sizes and locations of walls, doors, window fittings and appliances are shown conventionally and are approximate only and cannot be regarded as being a representation either by the Seller or his Agent. We hope that these plans will assist you by providing you with a general impression of the layout of the accommodation. The plans are not to scale nor accurate in detail. © Unauthorised reproduction prohibited.

As part of the service we offer we may recommend ancillary services to you which we believe will help with your property transaction. We wish to make you aware that should you decide to proceed we will receive a referral fee. This could be a fee, commission, payment or other reward. We will not refer your details unless you have provided consent for us to do so. You are not under any obligation to provide us with your consent or to use any of these services, but where you do you should be aware of the following referral fee information. You are also free to choose an alternative provider. To find out more about this, please speak to a member of the team.



complete.

bear in mind...

This property benefits from 2 parking spaces to the side of the property with an electric car charging point.



complete.

the location...

Upstairs, there are three bedrooms, two of which are well-proportioned doubles. The master bedroom is a generous double, featuring, a built in storage cupboard, carpeted floors and a stylish en-suite shower room with a tiled shower, wash basin, WC, and towel radiator. The two additional bedrooms are light and airy, both carpeted and overlooking the rear garden.

Completing the accommodation is the family bathroom, offering practical vinyl flooring and comprising a bath, wash basin, and WC. A useful cupboard is located on the landing, along with a ceiling hatch providing access to the loft space.

The rear garden is thoughtfully landscaped, featuring a stylish patio, beautifully laid lawn, and a decorative gravel area complete with a garden shed. Fully enclosed, it offers a secure and private retreat, ideal for children and pets. A side gate provides convenient access to the front of the property where you will find two allocated parking spaces with the option of an electric car charging point to add further practicality.

Tenure - Freehold
Council Tax Band C





complete.

Need a more complete picture? Get in touch with your local branch...

Tel **01392 422500**
Email exeter@completeproperty.co.uk
Web completeproperty.co.uk

Complete
141 Younghayes Rd
Cranbrook
EX5 7DR

Are you selling a property too? Call us to get a set of property details like these...

selling

letting

land &
new homes

signature
homes

complete.