

**SW19**

*it's all in the postcode...*



## Cavendish Road

**£285,000**

- Purpose built apartment
- Balcony
- Sought after location
- No onward chain
- Near to Northern line tube
- 
- Council tax Band C
- EPC Rating B



020 8544 2828

Wimbledon: Wimbledon Park: Colliers Wood

[www.SW19.com](http://www.SW19.com)

SW19 Estate Agents Ltd. Is registered in England & Wales No. 05508737

*it's all in the postcode...*

Beautifully presented one-bedroom purpose-built apartment in the heart of Colliers Wood, just moments from the high street and Northern Line tube station. Featuring a private balcony overlooking the rear, this lovely flat is bright, well maintained, and ready to move into. Offered with no onward chain, it represents an excellent opportunity for first-time buyers, investors, or anyone looking to secure a home in the sought-after SW19 property market.



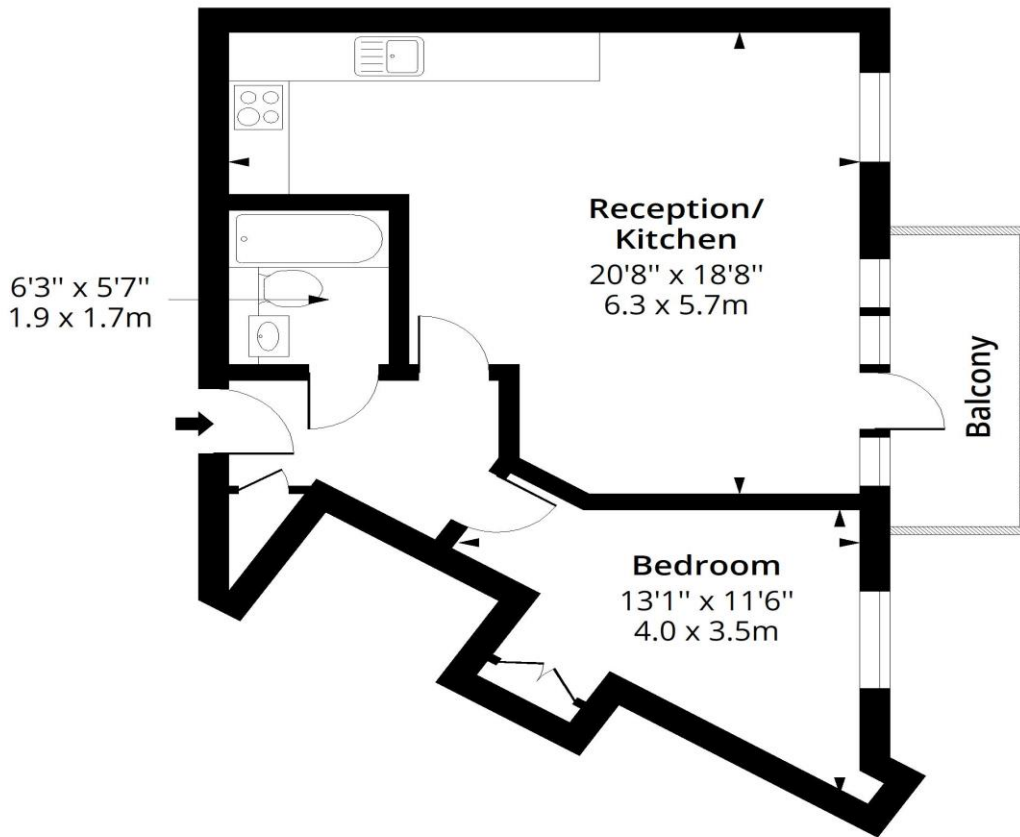
---

020 8544 2828  
Wimbledon: Wimbledon Park: Colliers Wood  
[www.SW19.com](http://www.SW19.com)  
SW19 Estate Agents Ltd. Is registered in England & Wales No. 05508737

*'it's all in the postcode...'*

# Cavendish Road SW19

Approx. Gross Internal Area 509 Sq Ft - 47.29 Sq M  
Approx. Gross Balcony Area 50 Sq Ft - 4.65 Sq M



## First Floor

Floor Area 509 Sq Ft - 47.29 Sq M

SW19



Measured according to RICS IPMS2. Floor plan is for illustrative purposes only and is not to scale. Every attempt has been made to ensure the accuracy of the floor plan shown, however all measurements, fixtures, fittings and data shown are an approximate interpretation for illustrative purposes only. 1 sq m = 10.76 sq feet.

lpaplus.com

Date: 9/5/2026

These particulars are for guidance only and should not be relied upon as a statement or representation of fact. All measurements given are approximate only and should not be relied upon for ordering carpets, equipment etc. Purchasers should satisfy themselves by inspection or otherwise as to the accuracy of the statements contained within. Neither SW19 estate agents ltd or related companies or their employees can confirm structural conditions of the property or that any appliances or other facilities are in working order. Purchasers are strongly recommended to arrange their own survey.

020 8544 2828

Wimbledon: Wimbledon Park: Colliers Wood

www.SW19.com

SW19 Estate Agents Ltd. Is registered in England & Wales No. 05508737

*'it's all in the postcode...'*