



Bradshaw Yard, TW8

£484 Per week

A stunning brand new 1 bed apartment located in Calville House. It boasts spacious living space, fitted kitchen and a private balcony. The double bedroom comes with fitted wardrobes and benefits from a luxurious bathroom. There is 24/7 concierge with residents lounge, gym, spa & open air pool coming in early 2024

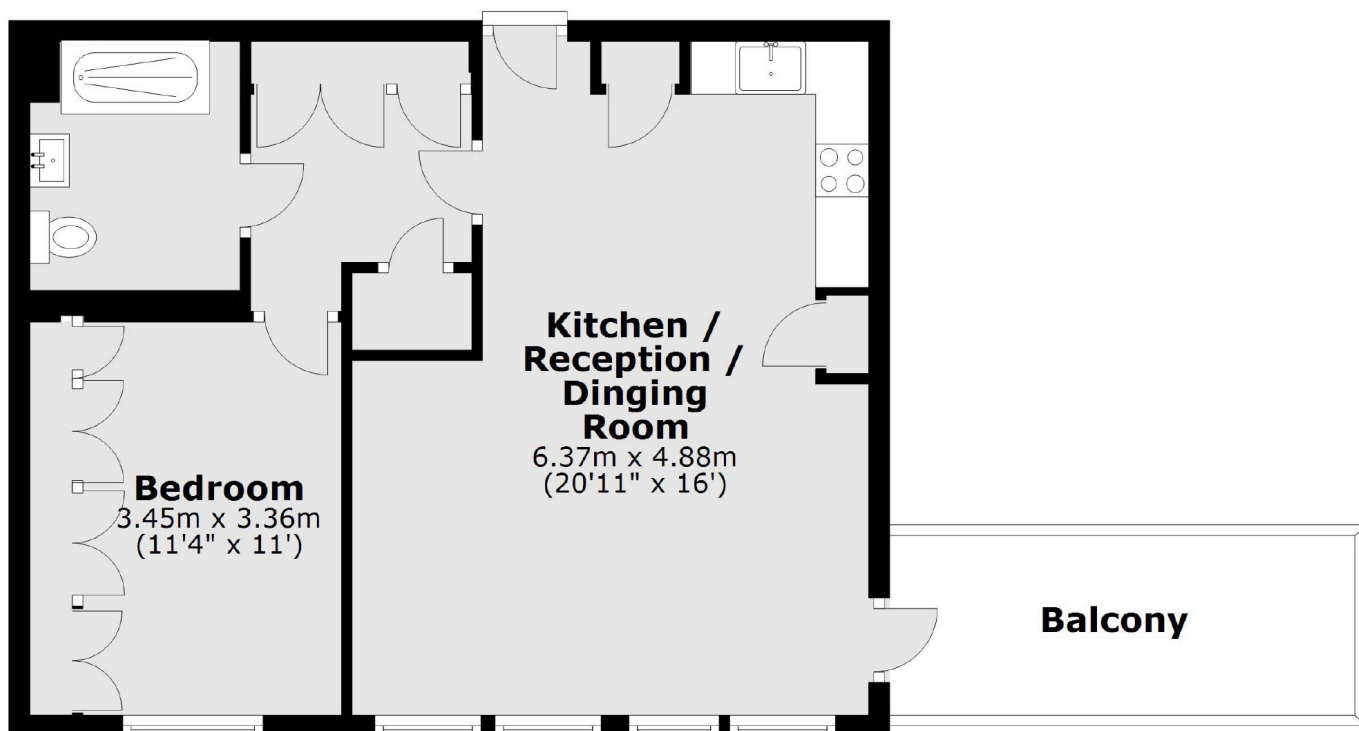
The Brentford Project is an exciting, brand new development located in the heart of Brentford, benefiting from access to amenities on the Brentford high street as well as transport links close by at Brentford Station.

The property also benefits from easy access to the A4, and M4 motorway running through Brentford giving easy access into central London and also out towards Heathrow.

Features

One Bedroom Apartment
Brand New
Balcony
View of Communal Gardens
Residents Swimming Pool And
Gym (coming soon)

Bradshaw Yard, Brentford, TW8



Main area: Approx. 51.6 sq. metres (554.9 sq. feet)
Plus balconies, approx. 7.6 sq. metres (82.2 sq. feet)