



## St. Leonards Road, SW14

£475,000

Set within the highly sought-after St. Leonards Court development in the heart of East Sheen, this generously proportioned purpose-built flat offers an excellent balance of comfort and convenience. The property is perfectly suited to both professionals and families alike. The development itself is well-maintained and provides a peaceful residential setting.

Deanhill Court is ideally located close to East Sheen High Street, offering an excellent selection of shops, restaurants, and cafés. The property also benefits from convenient access to North Sheen, Mortlake, and Richmond stations, providing excellent transport links into central London and beyond.

### Features

- Two Bedrooms
- Bright Reception
- Communal Garden
- First Floor
- Central Location
- Close Proximity to Station



## St. Leonards Road, SW14

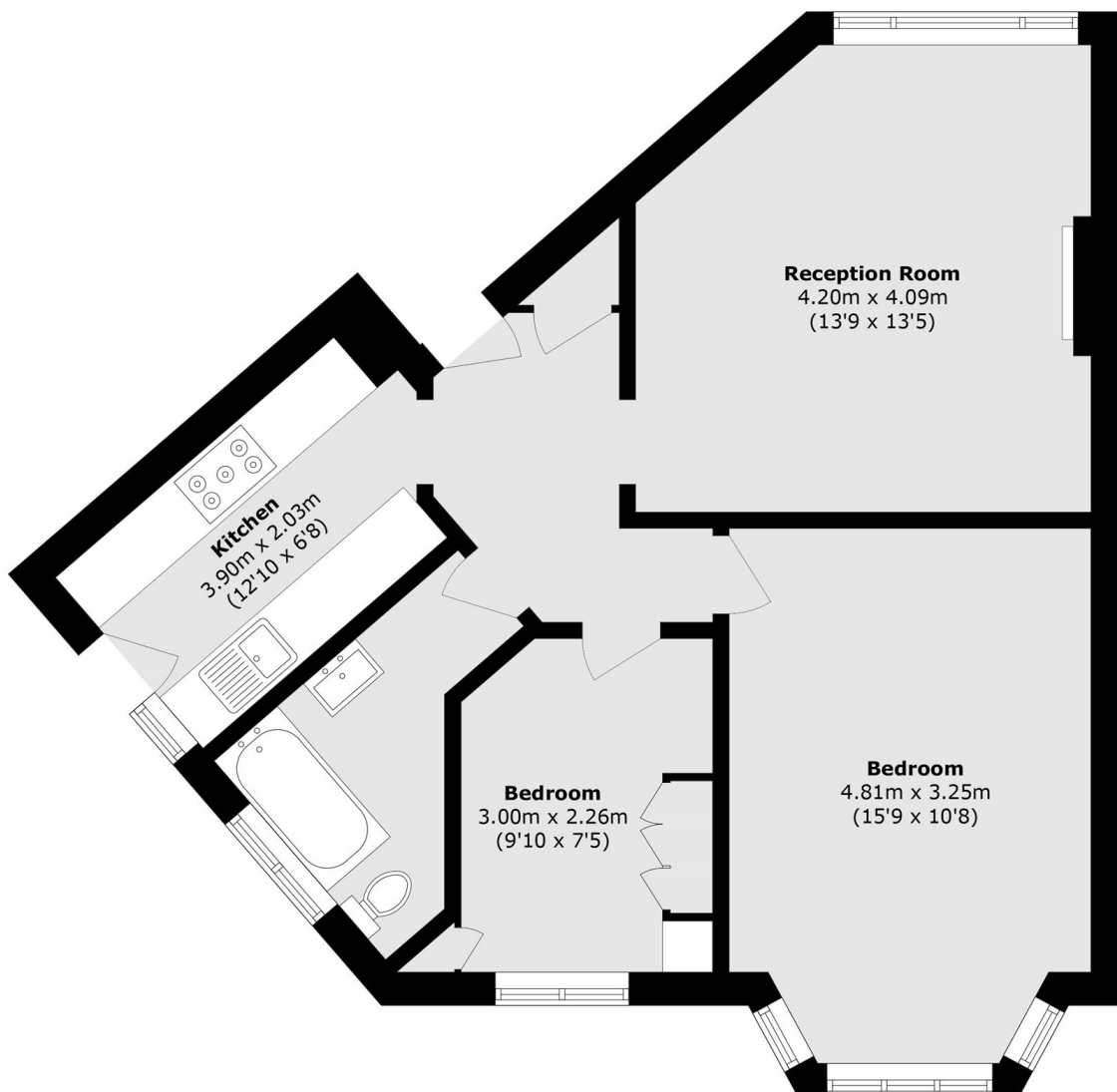
This beautifully presented flat offers two spacious bedrooms, a stylish modern bathroom, and a separate fully fitted kitchen designed for both practicality and ease of use.

Upon entering, you are welcomed into a bright and inviting living space, beautifully enhanced by elegant wall panelling, warm wooden flooring, and tasteful interior finishes throughout. The principal bedroom is a particular highlight, featuring a charming bay window that allows natural light to pour in.

The second bedroom is currently arranged as a child's room but offers excellent versatility, making it ideal as a guest bedroom, home office, or nursery. Blending comfort with contemporary design, this appealing flat presents a fantastic opportunity for buyers looking for a well-appointed home in a sought-after residential area.



# St. Leonards Road, London, SW14



Total area (approx.): 58 sq. m ( 624.3 sq. ft)