



The Danbury, Plot 90



The Danbury, Plot 90

Abbotsham Park, Clovelly Road, Bideford, EX39
3011
Bideford Town Centre 2 miles Barnstaple 7 miles Instow 6 miles

The Danbury is a beautifully designed three bedroom home offering a modern layout perfect for couples, young families, or anyone looking for a practical and stylish space.

- Ready to move into!
- 3 bedroom semi detached
- Open plan kitchen/dining area
- Separate living room
- Ensuite and family bathroom
- 2 parking spaces
- 10 year warranty
- Freehold
- Council tax band TBC
- EPC TBC

Guide Price £262,995

SITUATION

Welcome to Abbotsham Park – coastal living in a lovely riverside town. Explore the modern new houses for sale in Bideford Devon, including a choice of two, three and four bedroom homes. Nestled between the North Devon National Landscape and the Hartland Devon Heritage Coast, Abbotsham Park is just minutes from the sea. Designed for modern life, each home comes with quality finishes and energy-saving features.



OPEN HOUSE WEEKEND 28th and 29th MARCH

Join us for the Open House weekend to view available homes and explore buying schemes. Independent Financial Advisors and Stags Estate Agents will be on hand to make your move a reality. Call Stags Bideford Office for more information.

DESCRIPTION

Perfect for the way we live today, the three-bedroom Danbury has a modern open plan kitchen/dining room with garden access and a spacious front aspect living room that's ideal for entertaining. Upstairs there are three bedrooms, bedroom one has an en suite and a family sized bathroom. The Danbury also offers plenty of storage space. Appealing to families, first-time buyers and young professionals.

OUTSIDE

This home benefits from 2 parking spaces and private rear garden.

AGENT NOTES

Annual service charge will be payable. Some images may be CGI. Internal photos are provided to illustrate the high-quality finish and are taken from a similar property.

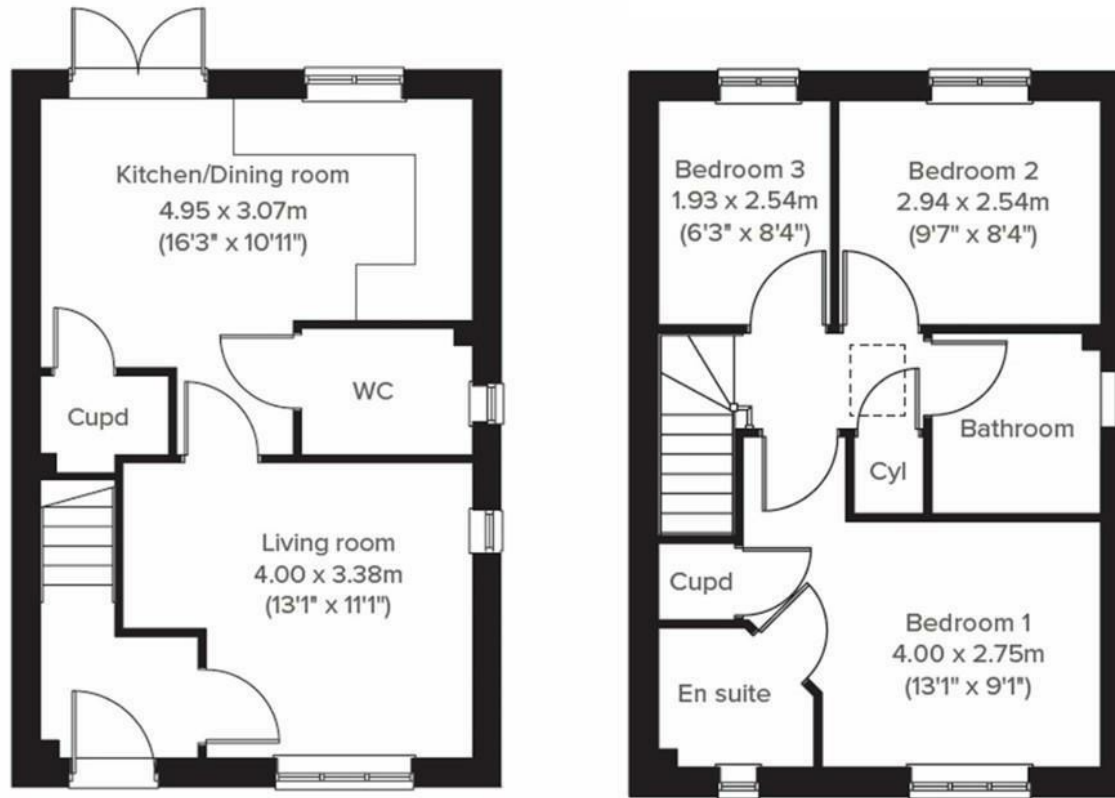
VIEWINGS

Please call the Stags Bideford office on 01237 425030.

DIRECTIONS

Abbotsham Park is situated off the A39 Atlantic Highway, on Clovelly Road.





IMPORTANT: Stags gives notice that: 1. These particulars are a general guide to the description of the property and are not to be relied upon for any purpose. 2. These particulars do not constitute part of an offer or contract. 3. We have not carried out a structural survey and the services, appliances and fittings have not been tested or assessed. Purchasers must satisfy themselves. 4. All photographs, measurements, floorplans and distances referred to are given as a guide only. 5. It should not be assumed that the property has all necessary planning, building regulation or other consents. 6. Whilst we have tried to describe the property as accurately as possible, if there is anything you have particular concerns over or sensitivities to, or would like further information about, please ask prior to arranging a viewing.



4 The Quay, Bideford, Devon, EX39 2HW

bideford@stags.co.uk

01237 425030



@StagsProperty

Cornwall | Devon | Somerset | Dorset | London