



Connells

Reginald Street
Luton



Property Description

This Two Bedroom Chain Free Mid-Terrace Property Situated in the High Town Area of Luton, Close to Luton Train Station. This Property Will Be A Perfect Investment Opportunity. The House Benefits From a Lounge, Dining Room, Kitchen, Family Bathroom To The First Floor Two Double Bedrooms, Kitchen, Upstairs Bathroom and a Rear Garden

Entrance

Lounge

11' 1" x 13' 1" (3.38m x 3.99m)

Dining Room

11' 1" x 11' 1" (3.38m x 3.38m)

Kitchen

7' 2" x 9' 8" (2.18m x 2.95m)

Landing

Bedroom One

13' 1" x 11' 1" (3.99m x 3.38m)

Bedroom Two

13' 1" x 11' 1" (3.99m x 3.38m)

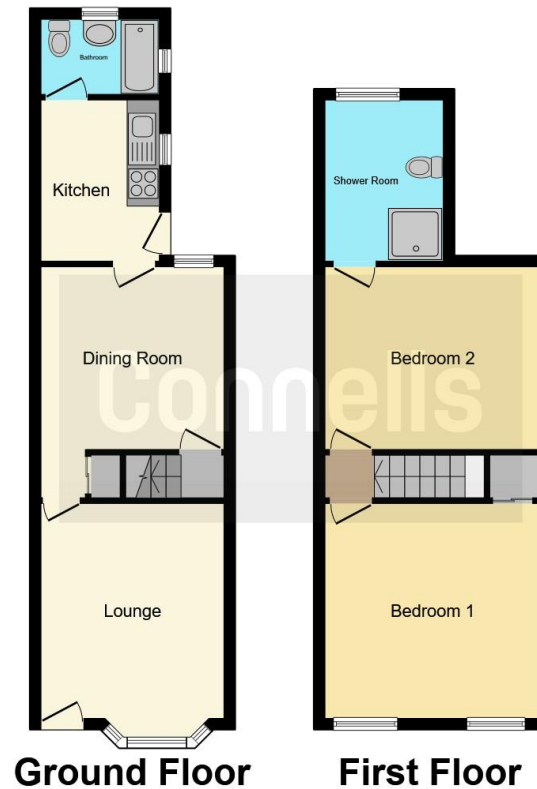
Bathroom

Outside









This floor plan is for illustrative purposes only. It is not drawn to scale. Any measurements, floor areas (including any total floor area), openings and orientation are approximate. No details are guaranteed, they cannot be relied upon for any purpose and they do not form part of any agreement. No liability is taken for any error, omission or misstatement. A party must rely upon its own inspection(s). Powered by www.focalagent.com

To view this property please contact Connells on

T 01582 450 999
E luton@connells.co.uk

83-83A George Street
 LUTON LU1 2AT

EPC Rating: Awaited
 Council Tax Band: B

Tenure: Freehold

view this property online connells.co.uk/Property/LUT317344



1. MONEY LAUNDERING REGULATIONS Intending purchasers will be asked to produce identification documentation at a later stage and we would ask for your co-operation in order that there will be no delay in agreeing the sale. 2. These particulars do not constitute part or all of an offer or contract. 3. The measurements indicated are supplied for guidance only and as such must be considered incorrect. Potential buyers are advised to recheck measurements before committing to any expense. 4. We have not tested any apparatus, equipment, fixtures, fittings or services and it is in the buyers interest to check the working condition of any appliances.

Connells Residential is registered in England and Wales under company number 1489613, Registered Office is Cumbria House, 16-20 Hockliffe Street, Leighton Buzzard, Bedfordshire, LU7 1GN. VAT Registration Number is 500 2481 05.

See all our properties at www.connells.co.uk | www.rightmove.co.uk | www.zoopla.co.uk

Property Ref: LUT317344 - 0002