



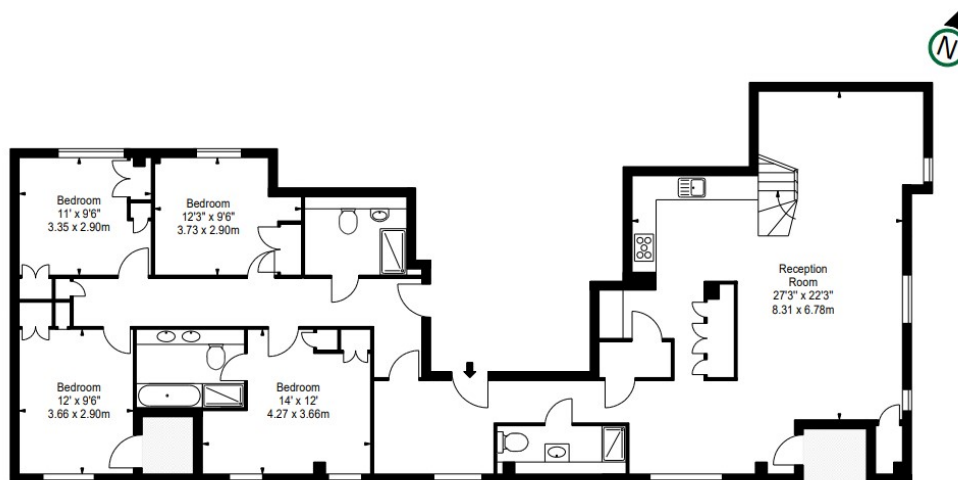
INTERLET

MERCHANT SQUARE, PADDINGTON, LONDON, W2
£2,650 PW



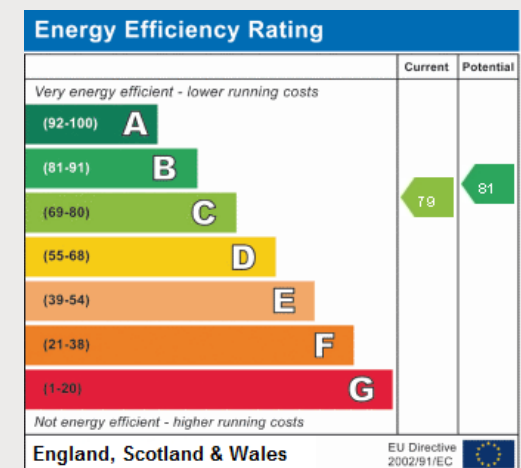
A breathtaking four-bedroom penthouse with a large terrace set in the heart of Paddington, London W2. Situated on the fifteenth floor of a prestigious building, this stunning property comprises a spacious living and entertaining area, a large terrace offering spectacular views over London, a fully-fitted designer kitchen, four superb double bedrooms, three bathrooms, and ample storage space. Tenants also benefit from a dedicated building manager who is on hand to assist with any property-related issues, a concierge service, a lift, and secure underground parking. Adjacent to the Grand Union Canal, Merchant Square is a new development conveniently located moments from an array of amenities in Paddington, including restaurants, shops, cafes, and local pubs. For transport links, (Bakerloo, Hammersmith & City, Circle, and District Lines) and Edgware Road (Circle, District, and Bakerloo Lines) provide easy access into the City of London. West Ends amenities are a leisurely walk away through tree-lined streets and green open spaces.[...]

lettings@interlet.com
+44(0)20 7795 6525
www.interlet.com



Important Notice

Interlet and their clients give notice that: 1) They are not authorised to make or give any representations or warranties in relation to the property, either here or elsewhere. The particulars do not form part of any offer or contract and must not be relied upon as statements or representations of fact. 2) Any areas, measurements, and distances are approximate. The text, images, and plans are for guidance only and are not necessarily comprehensive. It should not be assumed that the property has all necessary planning, building regulation, or other contents. Interlet has not tested any services, equipment, or facilities. Prospective tenants must satisfy themselves by inspection or otherwise. Please note that the local area may be affected by aircraft noise, you should make your own inquiries regarding any noise in the area before you make an offer.



interlet

SALES & LETTINGS

Welcome home.