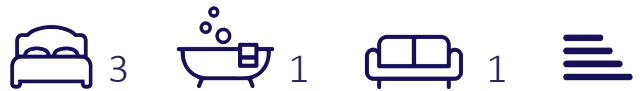




26 Markland Close

, Chelmsford, CM2 8RZ

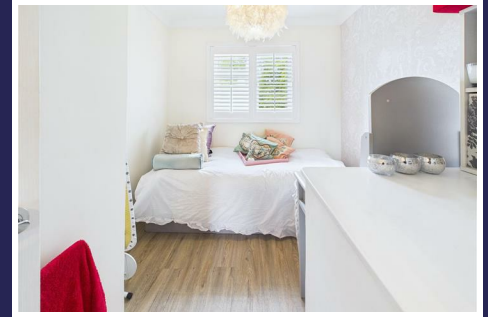
Guide price £400,000



26 Markland Close

, Chelmsford, CM2 8RZ

Guide price £400,000



Ground floor

Entrance Hallway

5'10 x 11'9 (1.78m x 3.58m)

Entrance door, stairs to first floor, radiator.

Living Area

12'2 x 12'11 (3.71m x 3.94m)

Window to front, feature fireplace, radiator, open to kitchen/diner.

Kitchen/Diner

18'7 x 9'8 (5.66m x 2.95m)

Range of fitted storage units with integrated electric oven, dishwasher, fridge/freezer and washing machine. Work surfaces incorporate sink unit with mixer taps, induction hob with extractor over. Window and doors to rear. Open to living area.

First floor

Bedroom One

10'8 x 11'1 (3.25m x 3.38m)

Window to front, radiator, fitted wardrobes.

Landing

4'8 x 6'3 (1.42m x 1.91m)

Stairs to ground floor, access to loft.

Bedroom Two

8'8 x 9'11 (2.64m x 3.02m)

Window to rear, radiator, fitted wardrobes.

Bedroom Three

7'8 x 9'4 (2.34m x 2.84m)

Window to front, radiator.

Bathroom

7'9 x 5'3 (2.36m x 1.60m)

Window to rear, panelled bath with shower over, close coupled WC, wash hand basin, heated towel rail.

Exterior

Front Garden

Paved pathway with flowers, lawn and shrubs.

Landscaped Rear Garden

Paved patio area, with a lawn, shrubs and flowers to borders

WC & Utility Room

Garage/Studio

Off Road Parking Adjacent to Garage



Road Map



Hybrid Map



Terrain Map



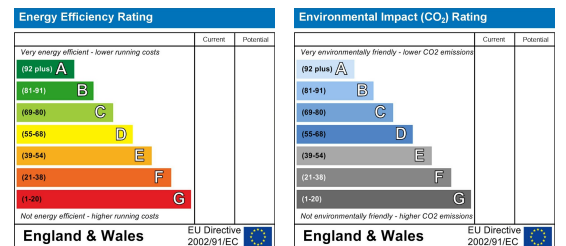
Floor Plan



Viewing

Please contact our Chelmsford Office on 01245 330764 if you wish to arrange a viewing appointment for this property or require further information.

Energy Efficiency Graph



These particulars, whilst believed to be accurate are set out as a general outline only for guidance and do not constitute any part of an offer or contract. Intending purchasers should not rely on them as statements of representation of fact, but must satisfy themselves by inspection or otherwise as to their accuracy. No person in this firm's employment has the authority to make or give any representation or warranty in respect of the property.