



**2 Bed
Apartment
located in 16 Silvercroft Street**

AiHOMES.

VR111690, 16 Silvercroft Street, Manchester



£1,900 Per Calendar Month

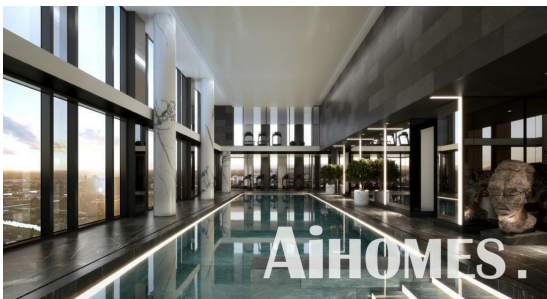
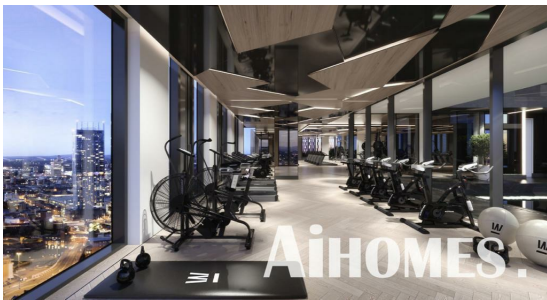
Welcome to this charming apartment located at 16 Silvercroft Street in the vibrant city of Manchester. This delightful property boasts two well-proportioned bedrooms, making it an ideal choice for couples, small families, or professionals seeking a comfortable living space.

The apartment features two modern bathrooms, ensuring convenience and privacy for all residents. The layout is thoughtfully designed to maximise space and light, creating a warm and inviting atmosphere throughout.

Situated in a lively neighbourhood, this apartment offers easy access to local amenities, including shops, restaurants, and parks, making it perfect for those who enjoy an active lifestyle. The excellent transport links nearby provide quick and easy connections to the city centre and beyond, making commuting a breeze.

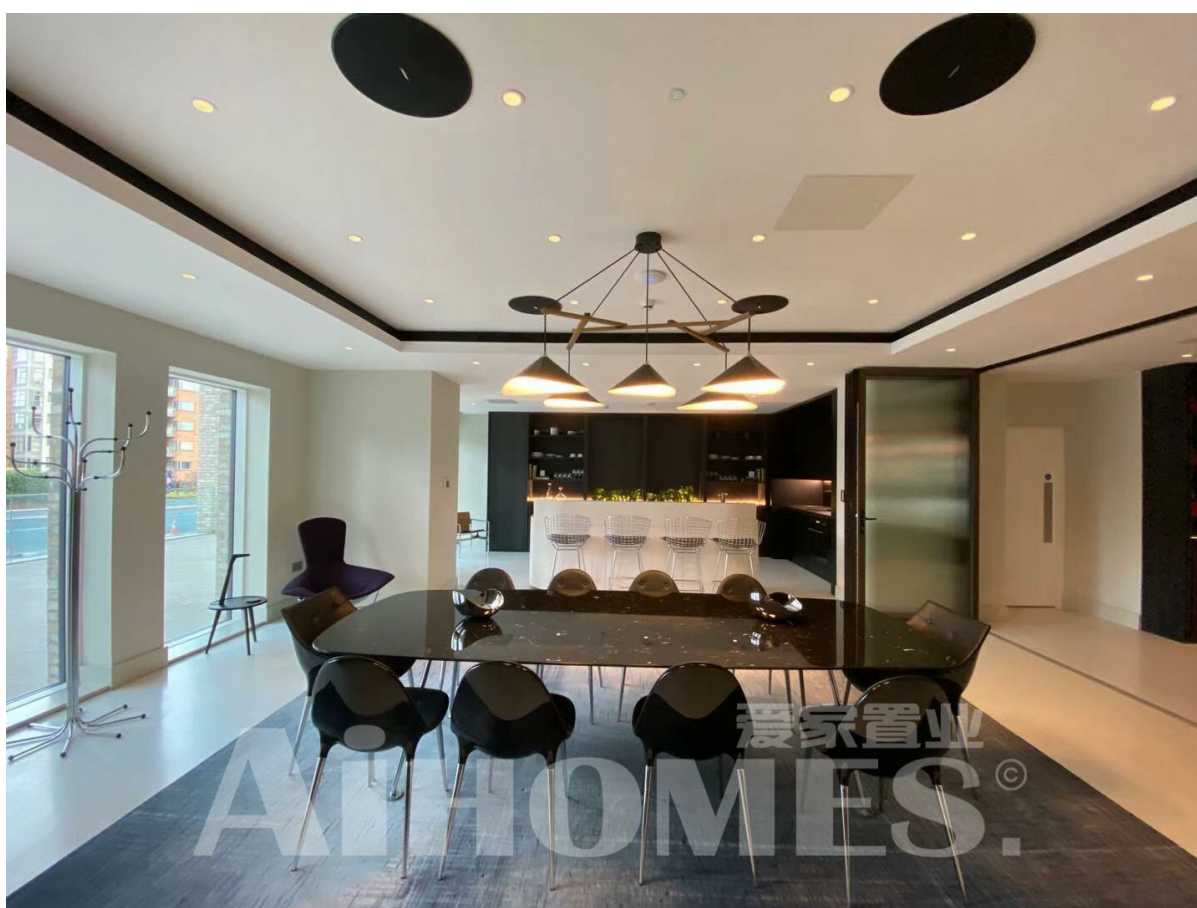
Whether you are looking to invest in a new home or seeking a rental opportunity, this apartment presents a fantastic option in one of Manchester's most sought-after areas. Don't miss the chance to make this lovely property your own.

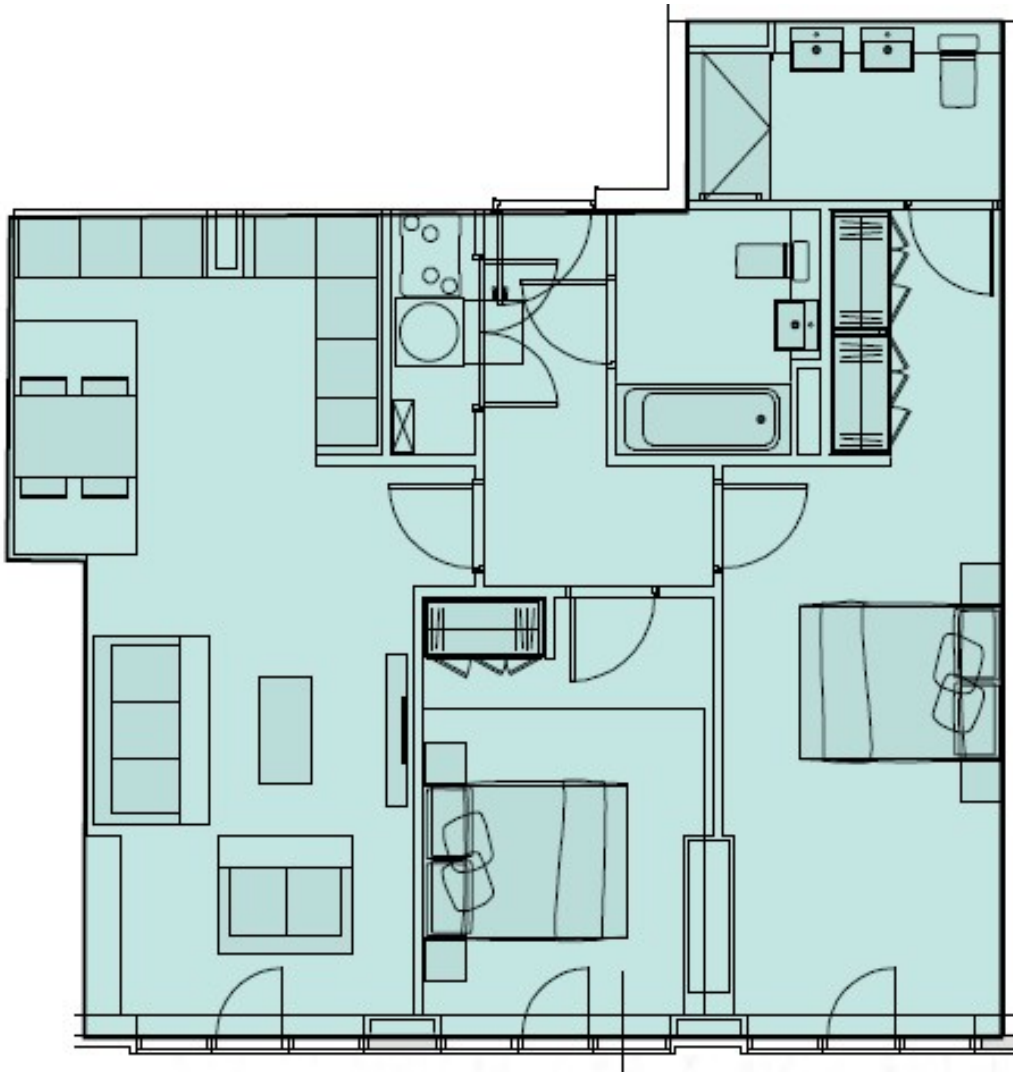






VR111690, 16 Silvercroft Street, Manchester





Energy Efficiency Rating		
	Current	Potential
<i>Very energy efficient - lower running costs</i>		
(92 plus) A		
(81-91) B		
(69-80) C		
(55-68) D		
(39-54) E		
(21-38) F		
(1-20) G		
<i>Not energy efficient - higher running costs</i>		
England & Wales	EU Directive 2002/91/EC	

EPC Rating:
Council Tax Band: D

CONTACT

5th floor, Empress Business Center
380 Chester Road
Manchester
M16 9EA

E: info@aihomes.uk

T: 0127 332 8069

