



1 Cromwell Mews, Marlborough
£1,600 pcm

mcFarlane
property.com



1 Cromwell Mews

Marlborough, Marlborough

Nestled within a prime location, this beautifully presented 2-bedroom apartment is discreetly positioned in a gated development just off Marlborough High Street. The property boasts its own garage and access to visitor parking spaces, offering convenience and security.

Upon entering, a security gate leads to the inner door and into the communal lobby. From here, another door provides access to a more private hallway, which serves as the entrance to Apartments 1 and 2.

As you step into 1 Cromwell Mews, you are greeted by a wide, light-filled hallway. On the left is a cloak cupboard, while an airing cupboard is situated on the right. The first room on the left is the second double bedroom, followed by the kitchen, which is fitted with contemporary units and integrated appliances. Further along, the expansive sitting/dining room features a dual aspect and high ceilings, creating a bright, airy living space. This room is equipped with telephone and TV connections.

To the right of the sitting/dining room lies the master bedroom, complete with an en-suite shower room and a range of built-in wardrobes. Heading back towards the entrance via the main hallway, you'll find an additional storage cupboard and the family bathroom, which includes a bath with a shower attachment.

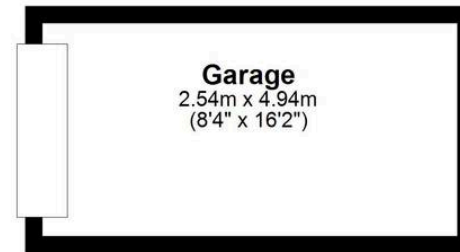
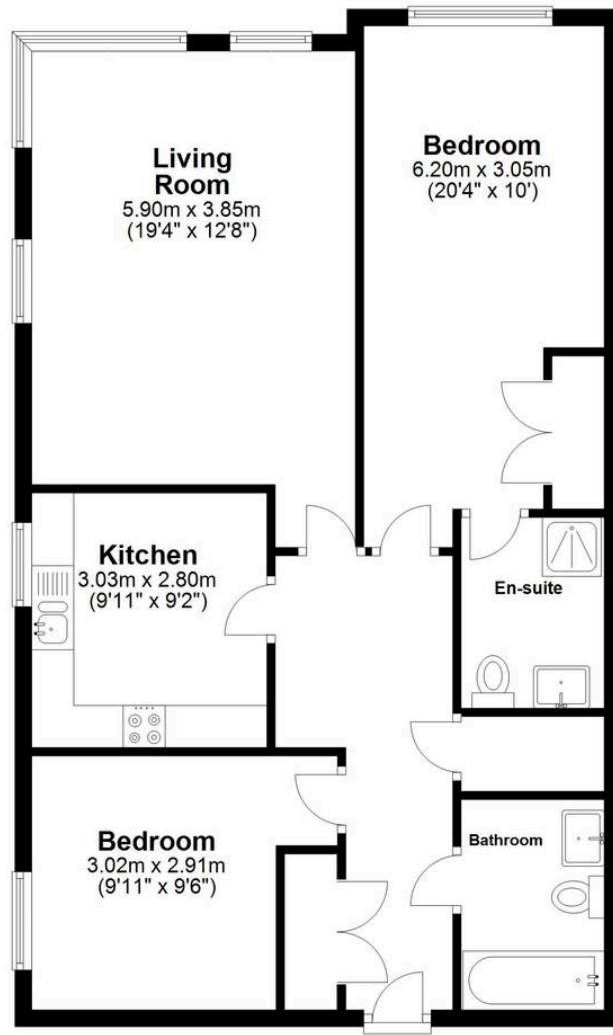
The property benefits from a communal courtyard garden with a seating area, providing a tranquil space to relax outdoors.





Ground Floor

Approx. 92.6 sq. metres (996.4 sq. feet)



Garage
2.54m x 4.94m
(8'4" x 16'2")

Total area: approx. 92.6 sq. metres (996.4 sq. feet)

McFarlane Sales & Lettings

McFarlane Sales & Letting, 106 High Street – SN8 1LT

01672 514380 • marlborough@mcfarlaneproperty.com • www.mcfarlaneproperty.com/

mcfarlane
property.com