

**For Rent**



## People Make Places



**D'Arblay Street, Soho W1**

2 bedrooms | 1,141 sq ft

£1,050 pw



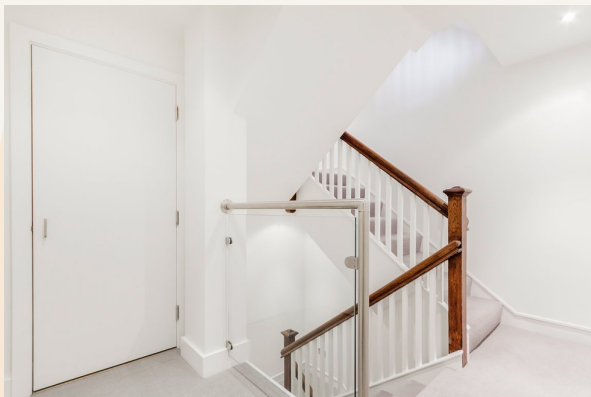


Two bedroom duplex apartment with a spacious private terrace in Soho. Contemporary in design, both bedrooms are on the lower floor with an ensuite bathroom and guest shower room, while an open plan living space and a separate utility are on the fourth floor. Available early May, unfurnished.

#### What you need to know

- Two double bedrooms
- Two bathrooms
- Private roof terrace
- Wood floors
- Open plan kitchen/reception room
- Unfurnished
- Located in central Soho
- Good storage
- Available early May
- Nearest tube Oxford Circus or Tottenham Court Road





### Overview

A spacious two bedroom and two bathroom apartment split over the third and fourth floors of a period building in Soho. Featuring an exceptionally large private terrace with plenty of space for alfresco dining and views across the rooftops of London, this apartment is contemporary in style with light beech wooden floors, a smart light grey kitchen with a white worktop and bathrooms with metro brick style tiles. Both bedrooms are double in size and are on the lower floor; the master with an ensuite bathroom and a guest shower room is accessible from the hallway. Stairs lead up to the inviting open plan living space, which shares the same floor as a utility room and further stairs to the roof terrace.

D'Arbly Street links Berwick Street and Poland Street in Soho. Transport links are available at nearby Tottenham Court Road (Central, Northern and Elizabeth Lines) and Oxford Circus (Central, Bakerloo and Victoria Lines) Underground Stations for travel within London and as far as Heathrow. Soho Square is just a few streets away, providing a tranquil green space to relax, while several bus routes operate on nearby Oxford Street and Charing Cross Road.

The apartment is available early May on an unfurnished basis.  
Westminster Council tax band: G.



**D'Arbly Street, Soho W1**

# People Make Places

London is a collection of inspiring urban villages and one of the most exciting places in the world to live, work & play.

We work with both property owners and their occupiers, sharing the story of these vibrant neighbourhoods, conveying the unique soul & energy to future custodians, the people who'll keep them buzzing.

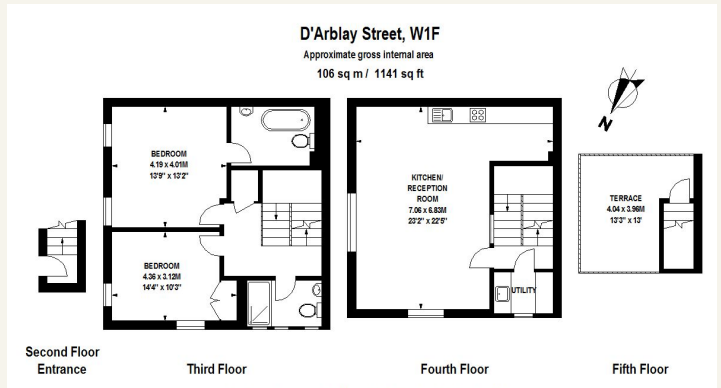
And unlike many real estate businesses we're not just about buildings, because streets & buildings don't make a neighbourhood.

We're about building relationships, because **people make places**.

MISINTERPRITATION ACT [COPYRIGHT] DISCLAIMER: Tavistock Bow Ltd for themselves and for the vendor(s) of this property whose agents thy are, given notice that: 1. These particulars do not constitute, not constitute any part of, an offer or contract. 2. None of the statements contained in these particulars as to the property are to be relied on as statements or representations of fact. 3. Any intending purchaser or lessee must satisfy themselves by inspection or otherwise as to the correctness of each of the statements contained in these particulars. 4. The vendor(s) or lessor(s) do not make or give and neither Tavistock Bow Ltd nor any person in their employment has any authority to make or give any representation or warranty whatever in relation to this property. Finance Act 1989, Unless otherwise stated all prices and rents are quote exclusive of VAT. Property Misrepresentation Act 1991; These details are believed to be correct at the time of compilation but may be subject to subsequent amendment.

Follow us:     @tavistockbow

Score	Energy rating	Current	Potential
92+	A		
81-91	B		
69-80	C		74 C
55-68	D	55 D	
39-54	E		
21-38	F		
1-20	G		



**tavistockbow**

21 New Row, Covent Garden,  
London, WC2N 4LE

t: 020 7477 2177  
e: hello@tavistockbow.com  
w: tavistockbow.com



**D'Arbly Street, Soho W1**