



## Alyth Gardens, NW11

£5,200 Per calendar month

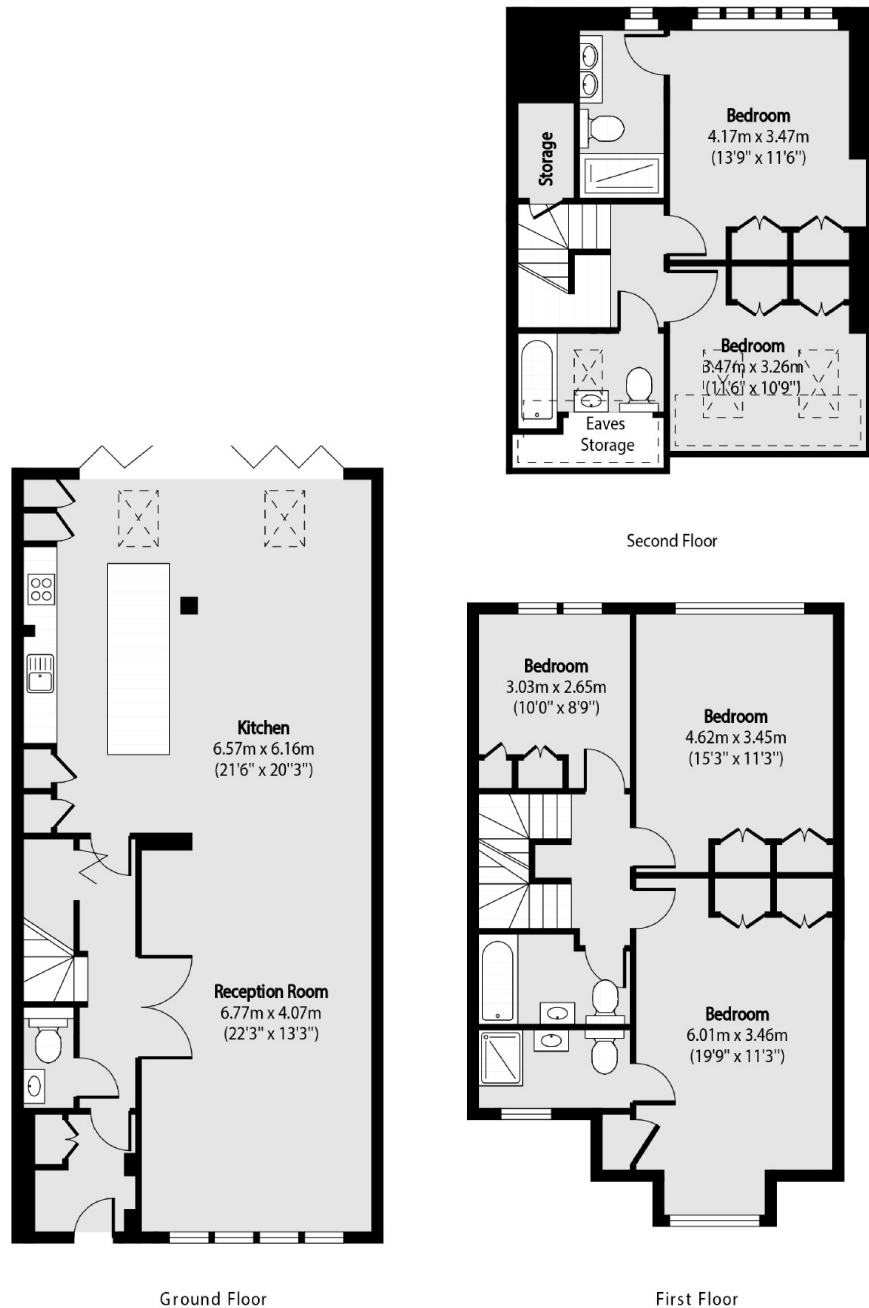
An impressive five bedroom, four bathroom terrace house set over three floors. The property has wooden floors throughout, a private garden, open plan kitchen and built in storage.

Located on a quiet residential street in Golders Green under half a mile to Golders Green Station and an array of shops, cafes and restaurants.

### Features

Terrace House  
Five Bedrooms  
Four Bathrooms  
Private Garden  
Wood Floors Throughout  
Recently Refurbished

# Alyth Gardens, London, NW11



Total area (approx): 186.82 sq m (2011 sq. ft)