



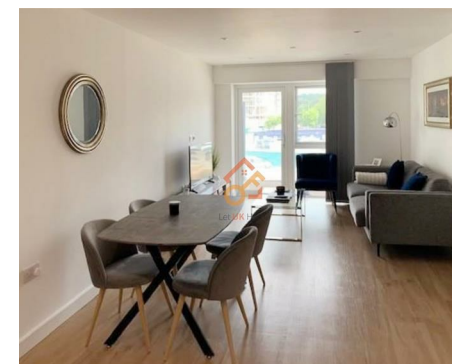
Let **UK** Home

1 Bedrooms

Flat

Located in London

£1,799 Per Month



info@letukhome.co.uk

<https://www.letukhome.co.uk/>

01795 358 886



Caversham Road London

NW9 4DT



Let UK Home are excited to offer this spectacular 1 bedroom apartment in the heart of Celeste House part of Beaufort Park.

The flat comprises a spacious open kitchen with a stylishly attached dining area, a magnificent living room leading to a large private balcony, one bright bedroom with built-in wardrobes and one modern bathroom.

Residents will benefit from concierge and onsite fitness facilities including swimming pool, vitality pool, steam room and sauna, gym and fitness studios.

Only several minutes walk from Beaufort Park, Colindale Underground station puts the Northern Line and the wider tube network at your fingertips, running a 24 hour service. Euston, King's Cross St. Pancras and other key destinations are less than half an hour away. Hendon station, also nearby, offers access to the national rail network, providing easy access to Stratford and Central London.

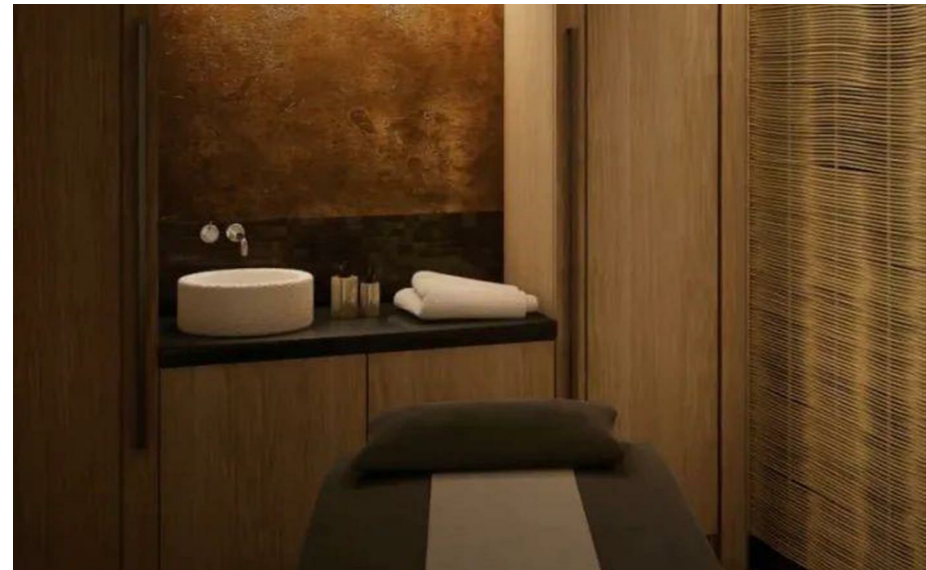
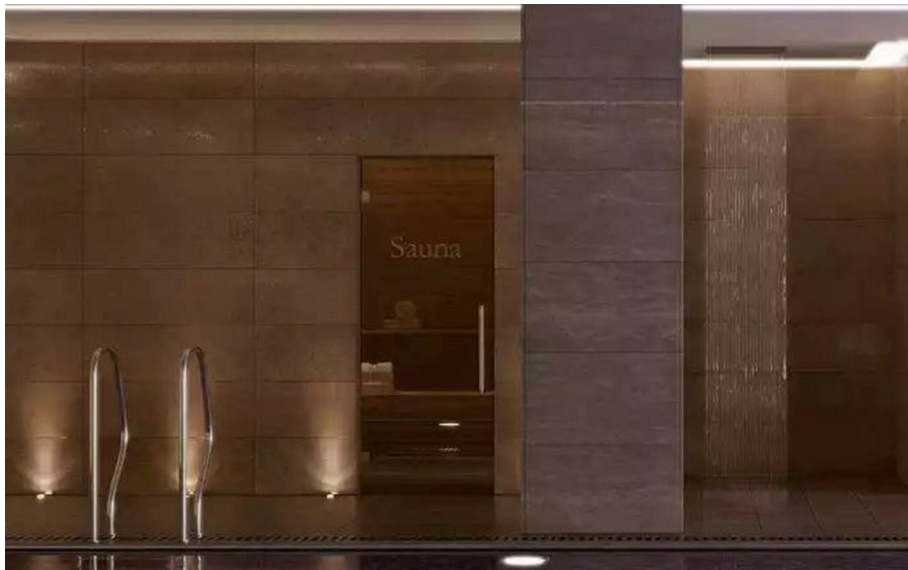
The property is close to the fashionable landmarks Hendon, Mill Hill, Golders Green and Hampstead Heath. There are supermarkets such as Tesco, M&S, Sainsbury's and New Oriental Food City within walking distance. It is also within easy reach of Brent Cross Shopping Center. Colindale Park is also within walking distance, so you can do a morning run.

This property enjoys convenient access to numerous prestigious universities across London, including Middlesex University, University College London (UCL), King's College London (KCL), The London School of Economics and Political

Caversham Road London

£1,799 Per Month

- 2nd Floor
- 24h Security
- The Gym
- Sauna & Steam Room
- Concierge Service
- Swimming Pool
- The Spa
- EPC Rating: B





1 Bedroom Apartment

Living Space	8.22m x 3.20m	27' 0" x 10' 6"
Bedroom 1	4.52m x 2.90m	14' 10" x 9' 6"

Total floor area 51 square metres



Let **UK** Home

3F 2 Eastbourne Terrace
 Paddington
 London
 W2 6LG

01795 358 886

info@letukhome.co.uk

Council Tax Band: C

Local Authority:

Agents Note: Whilst every care has been taken to prepare these particulars, they are for guidance purposes only. All measurements are approximate and are for general guidance purposes only and whilst every care has been taken to ensure their accuracy, they should not be relied upon and potential buyers/tenants are advised to recheck the measurements.

Energy Efficiency Rating		Current	Potential
Very energy efficient - lower running costs			
(92 plus) A			
(81-91) B			
(69-80) C		82	82
(55-68) D			
(39-54) E			
(21-38) F			
(1-20) G			
Not energy efficient - higher running costs			
England & Wales	EU Directive 2002/91/EC		

<https://www.letukhome.co.uk/>