



Stafford Road, Middlesex, HA4 6PJ

£450,000

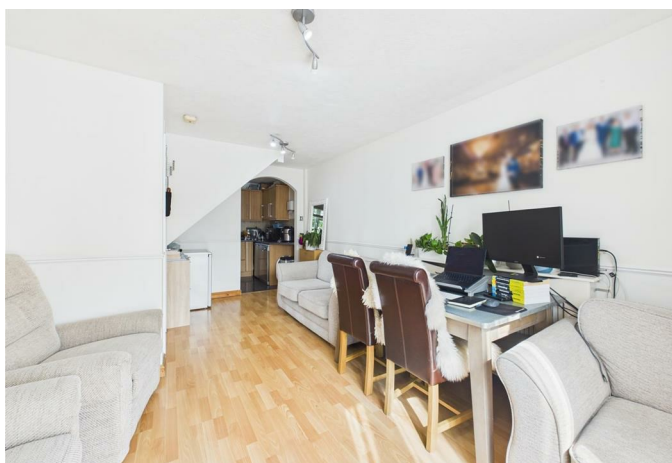


[gibsonhoney](https://www.gibsonhoney.co.uk)



gibsonhoney

NO UPPER CHAIN. Gibson Honey are delighted to present to the market this well proportioned two bedroom semi-detached house. The property briefly comprises: spacious lounge/diner, modern bathroom suite, spacious master bedroom, good size second bedroom, and a large private rear garden. The property benefits from gas central heating and double glazed windows throughout. Set in this highly convenient location, a stones throw from Ruislip Gardens Primary school and within catchment of Ruislip High. Ruislip Gardens, Ruislip Manor and Ruislip High streets are nearby, offering a good range of shops, restaurants, bus routes and rail links including Ruislip Gardens tube station (Central line) which is within approximately 5 minutes walk. The A40/M40/M25 are set within striking distance offering swift and easy access to Central London and the Home Counties.



ENTRANCE HALL

Front aspect double glazed frosted glass window, laminate flooring, door to:

LIVING AREA

Side aspect double glazed double doors, laminate flooring, dado rail, radiator

KITCHEN

Side aspect double glazed windows, part tiled walls, range of base and eye level units, stainless steel sink with drying rack, tiled flooring, room for appliances.

LANDING

Doors to:

BEDROOM ONE

Side aspect double glazed windows, built in wardrobes, laminate flooring, radiator

BEDROOM TWO

Side aspect double glazed windows, built in wardrobes, radiator, laminate flooring, storage cupboard

BATHROOM

Front aspect double glazed frosted glass windows, tiled walls, tiled flooring, panel enclosed bath with mixer taps and shower attachment, towel, low level w/c, pedestal wash hand basin

GARDEN

Patio area, panel enclosed fence, shed for garden storage

COUNCIL TAX

London Borough of Hillingdon - Band C - £1,656.80

N.B. WE RECOMMEND YOUR SOLICITOR VERIFIES THIS BEFORE EXCHANGE OF CONTRACTS

DISTANCE TO STATIONS

Ruislip Gardens (0.4 miles) - Central
Ruislip (0.9 miles) - Metropolitan/Piccadilly



73 Victoria Road, Ruislip Manor, Middlesex, HA4 9BH

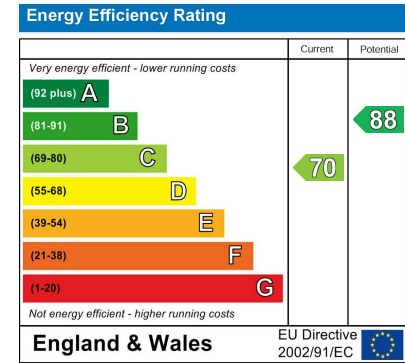
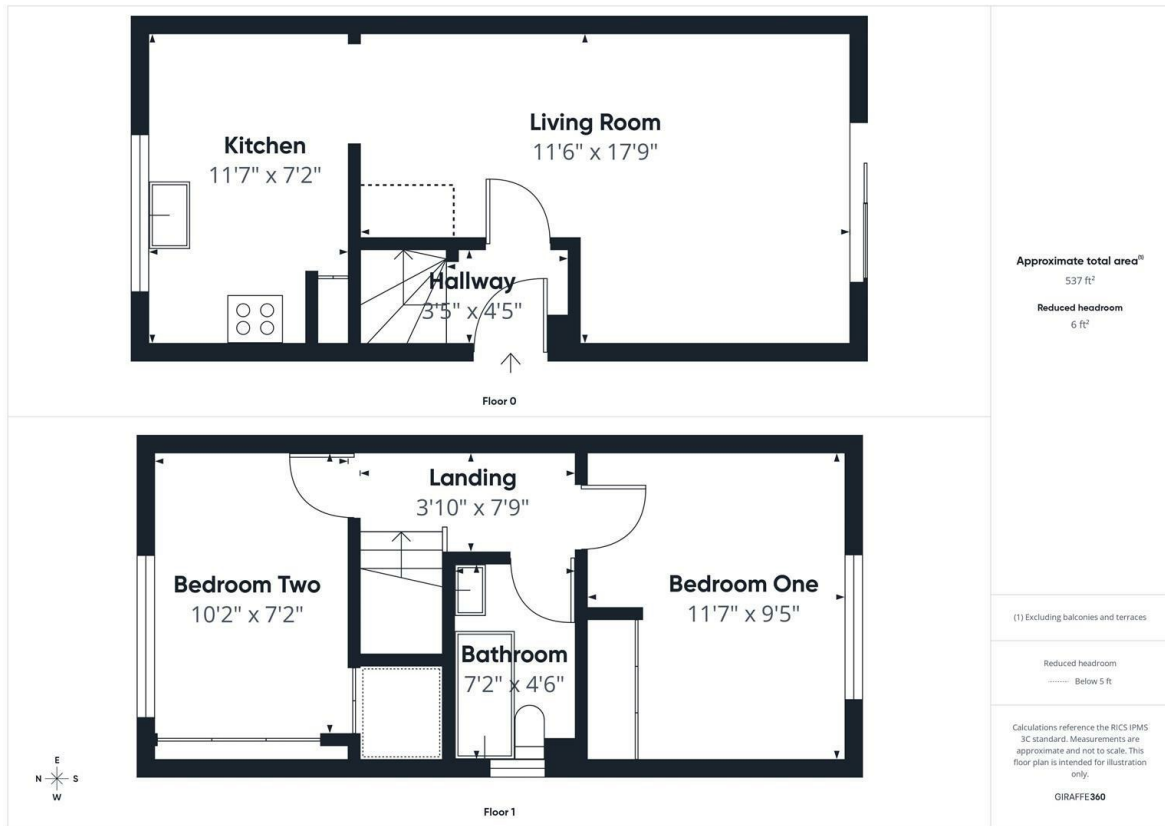
T: 01895 699077

ruislipmanor@gibsonhoney.co.uk

www.gibsonhoney.co.uk



gibsonhoney



You may download, store and use the material for your own personal use and research. You may not republish, retransmit, redistribute or otherwise make the material available to any party or make the same available on any website. These particulars, whilst believed to be accurate are set out as a general outline only for guidance and do not constitute any part of an offer or contract. Intending purchasers should not rely on them as statements or representation of fact, but must satisfy themselves by inspection or otherwise as to their accuracy. No person in this firm's employment has the authority to make or give any representation or warranty in respect of the property.