



Matthew James

St James House | St James Road | Surbiton | Surrey KT6 4QH

T: +44 (0) 20 8390 2266

E: enquiries@matthewjamesestateagents.co.uk

www.matthewjamesestateagents.co.uk



Maple Road, Surbiton, KT6 4AS

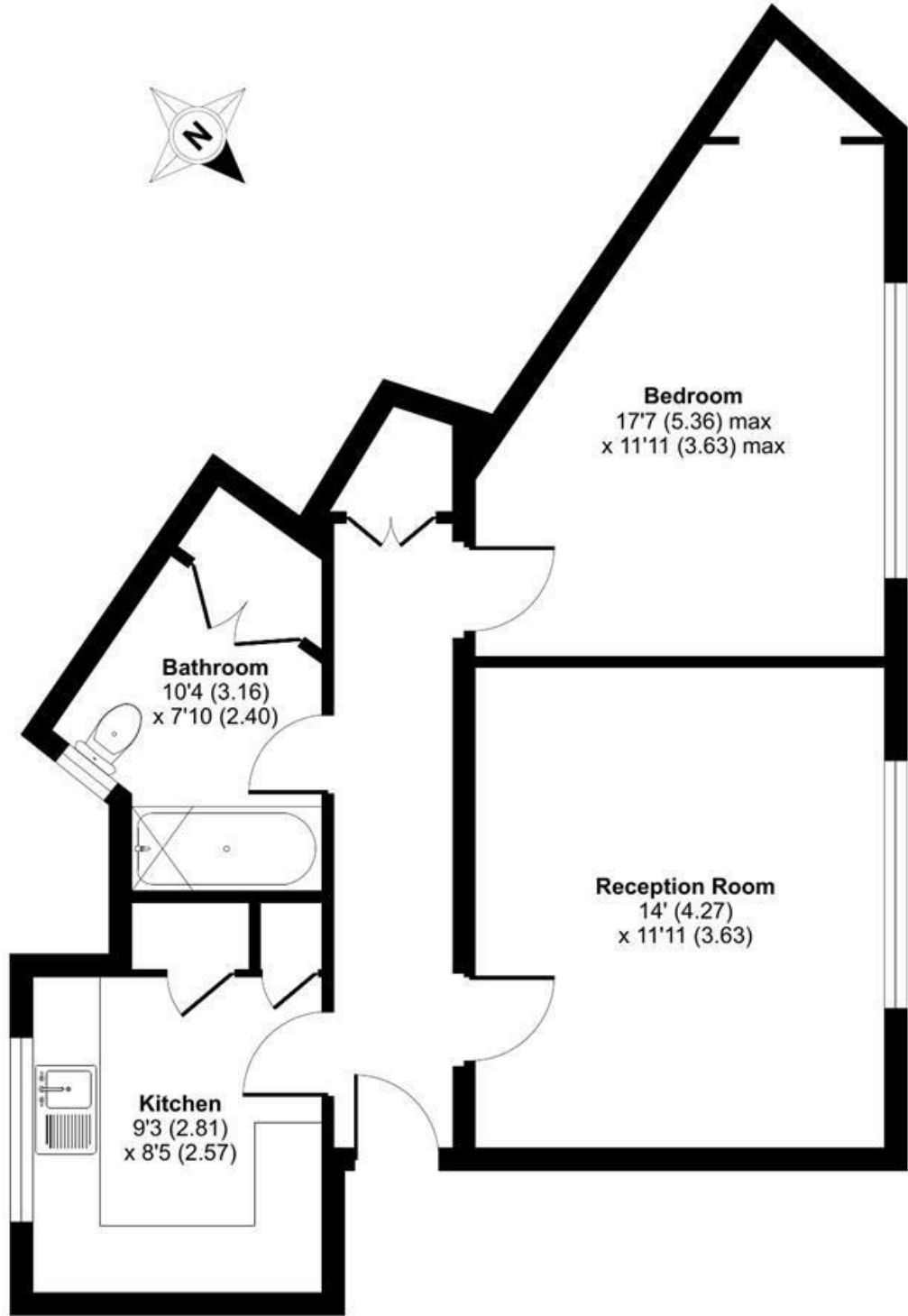
A very spacious one-bedroom ground-floor purpose apartment located within the heart of Surbiton only a few minutes walk from the mainline station, high street and the Thames. The many benefits include a large living room with sitting and dining space. There is a separate good size shaker-style fitted kitchen with appliances. The triangular shaped bedroom includes fitted wardrobes and the white bathroom suite includes a shower over the bath. Gas central heating and double glazing. The lease is 84 years and being extended by the seller to 174 years. We are informed the service charge is approx. £1100 pa. Sold with no onward chain.

Guide Price £289,950 Leasehold

EPC Rating: D

Brine Court, Maple Road, Surbiton, KT6

Approximate Area = 572 sq ft / 53.1 sq m
For identification only - Not to scale



GROUND FLOOR

Floor plan produced in accordance with RICS Property Measurement 2nd Edition, Incorporating International Property Measurement Standards (IPMS2 Residential). © nchecom 2025. Produced for Matthew James. REF: 1344903

We aim to make our property details a reliable guide. However they are not guaranteed and do not form part of a contract. Information in relation to lease length, service charge and ground rent has been provided by the vendor, they are likely to be subject to reviews and increases in the future and will need to be verified by your legal representative. Please note that appliances and heating systems have not been tested and therefore no warranty can be given as to their good working order. Carpets, curtains, gas fires, electrical goods/fitings and other fixtures, unless expressly mentioned, are not included in the sale of this property. If there are any important matters which are likely to affect your decision to buy, please contact our office.

