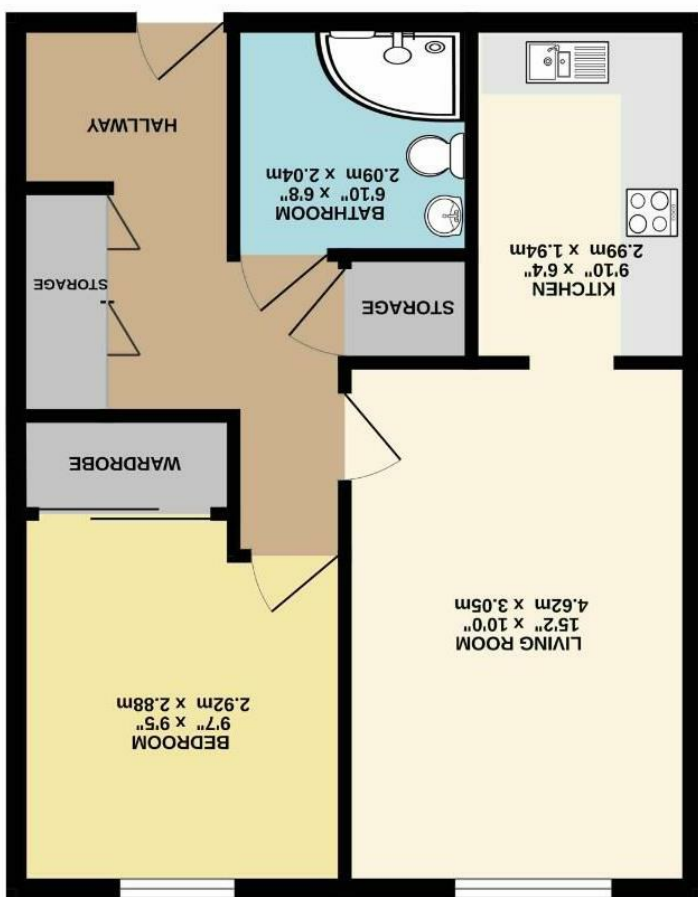


Fishwick nor the vendor or lessor accept any responsibility in respect of these particulars, which are not intended to be statements or representations of fact and any intending purchaser or lessee must satisfy himself by inspection or otherwise as to the correctness of each of the statements contained in these particulars. Any floorplans on this brochure are for illustrative purposes only and are not necessarily to scale.



FIRST FLOOR (45.1 sq.m.) approx. 485 sq.ft.





38-40 Barlow Moor Road,
Didsbury M20 2GE

£139,950

The Property

****OVER 55's ONLY****

A first floor apartment forming part of the secure and convenient 'Parkfield Court', with lovely communal gardens, a residents car park and a great location which is within a short stroll of Didsbury Village.

There is lift access to all floors, a residents lounge area and this particular flat benefits from both double glazed windows and electric heating. In outline comprising of a welcoming entrance hall and generous cloaks cupboard, living room with pleasant views, fitted kitchen, double bedroom with fitted wardrobes and shower room with white suite.

Located on Barlow Moor Road, Parkfield Court is perfectly placed for public transport and a range of shops, cafés & restaurants available in Didsbury Village.

No onward chain

Directions

M20 2GE



- Over 55's only
- Popular Parkfield Court development
- Lift access to all floors
- Communal residents lounge
- Residents car park & communal gardens
- Double glazed windows
- Living room with pleasant views
- Double bedroom & fitted wardrobes
- Fitted kitchen & shower room
- No onward chain

Postcode - M20 2GE

EPC Rating -

Floor Area - 485.00 sq ft

Local Authority - Manchester City Council

Council Tax - B

