



7 Walkers Close, Bottesford
Nottingham

£550,000

DavidGrace





7 Walkers Close

Bottesford, Nottingham

Beautiful 5-bed home in Bottesford, tucked in a quiet cul-de-sac near pubs and transport links. Spacious, light-filled living, open kitchen with conservatory, garden, double garage and flexible space.

Council Tax band: F

Tenure: Freehold

EPC Energy Efficiency Rating: D

EPC Environmental Impact Rating: E

- Five Bedroom Executive Detached House in Sought After Bottesford
- Large and Stylish Entrance Hall
- Light-Filled Lounge with Bay Window and Wood Burner
- Open-Plan High Spec Kitchen and Conservatory
- Double Garage and Space for 4 Cars on Driveway
- Five Double Bedrooms - Two with Ensuites
- Downstairs WC and Family Bathroom
- Bedroom 1 with Built in Wardrobes and Ensuite
- Low Maintenance Garden - Perfect for Entertaining
- EPC - D

DavidGrace



Entrance Hall

Lounge

17' 5" x 11' 10" (5.30m x 3.60m)

Dining Room

11' 10" x 8' 10" (3.60m x 2.70m)

Kitchen

21' 4" x 9' 6" (6.50m x 2.90m)

Sun Room

9' 6" x 9' 6" (2.90m x 2.90m)

Utility Room

WC

Landing

Bedroom 1

15' 9" x 14' 1" (4.80m x 4.30m)

Ensuite

Bedroom 2

14' 5" x 9' 10" (4.40m x 3.00m)

Ensuite

Bedroom 3

11' 10" x 10' 2" (3.60m x 3.10m)

Bedroom 4

11' 2" x 10' 2" (3.40m x 3.10m)

Bedroom 5

11' 10" x 8' 2" (3.60m x 2.50m)

Bathroom





GARDEN

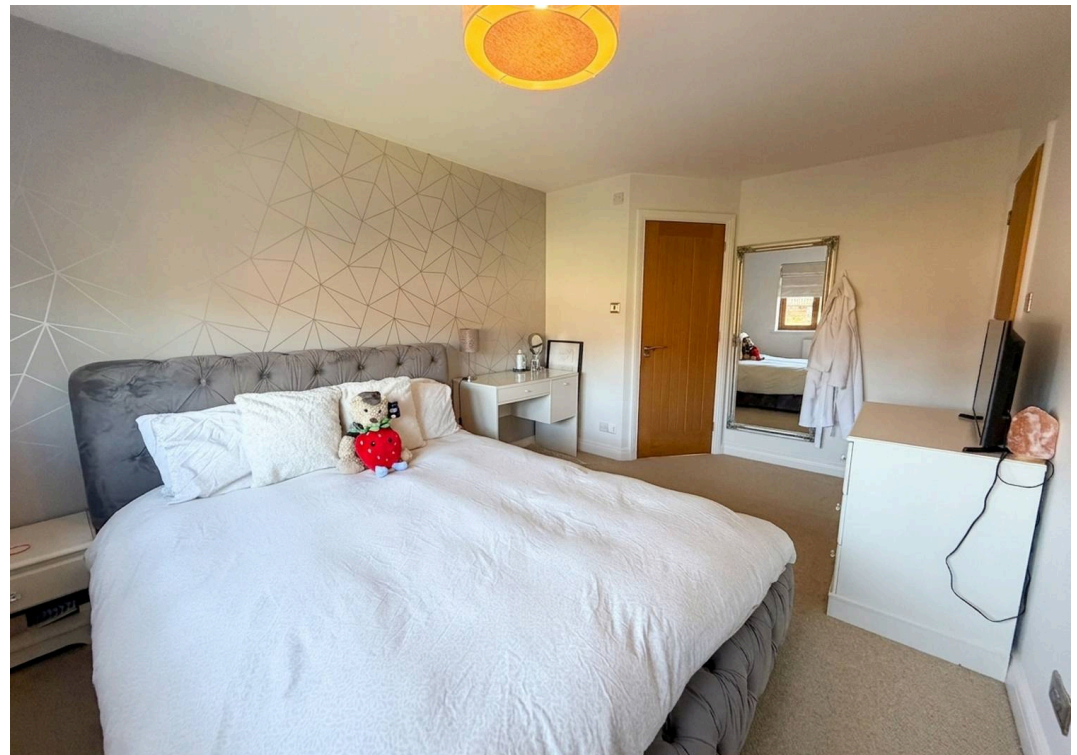
DRIVEWAY

4 Parking Spaces

DOUBLE GARAGE

2 Parking Spaces









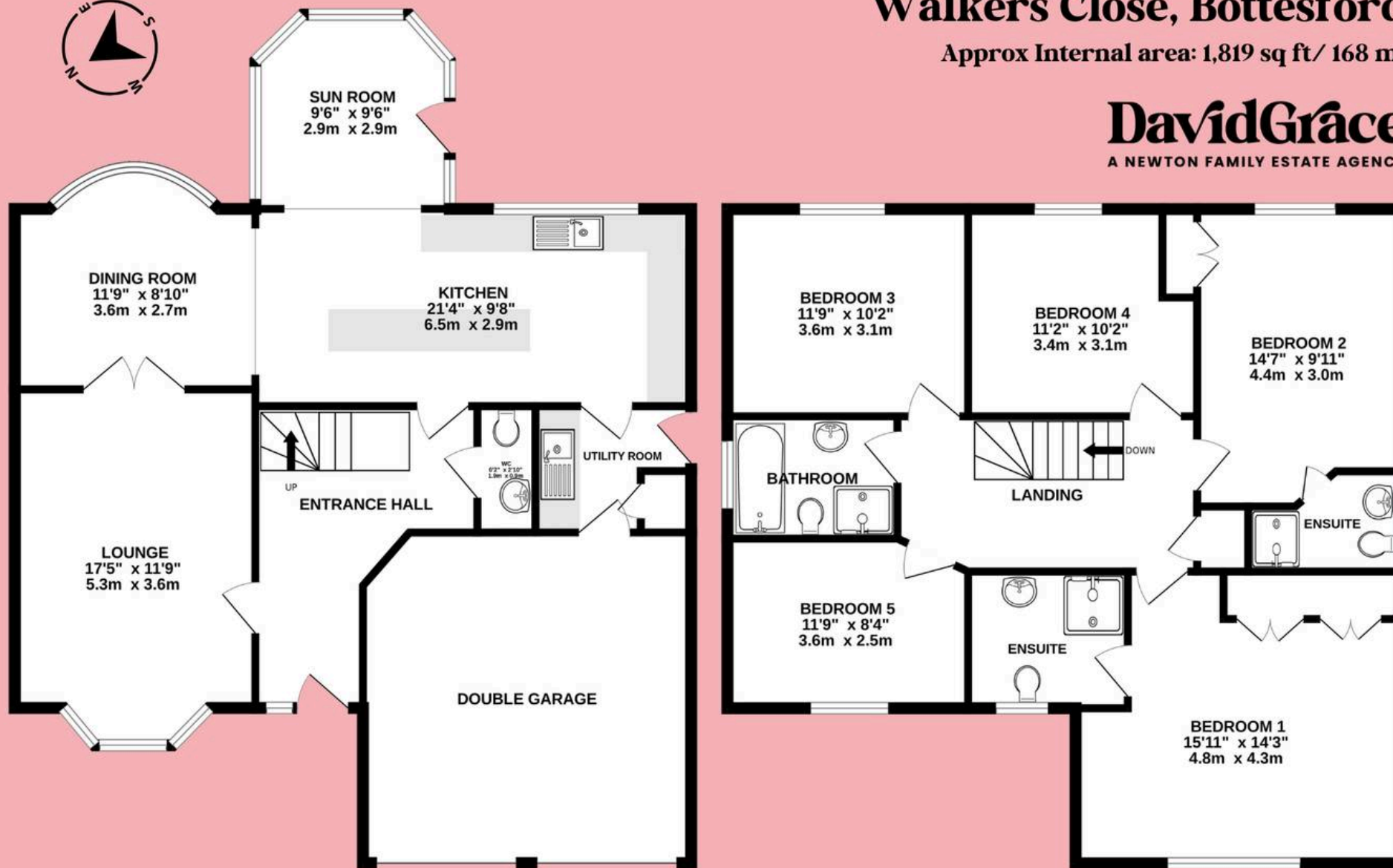


Walkers Close, Bottesford

Approx Internal area: 1,819 sq ft/ 168 m²

DavidGrace

A NEWTON FAMILY ESTATE AGENCY



This floorplan is for illustrative purposes only. It is not drawn to scale. Any measurements, floor areas (including any total floor area), openings and orientations are approximate, No details are guaranteed, they cannot be relied upon for any purpose and do not form part of any agreement. No liability is taken for any error, omission or misstatement. A party must rely upon its own inspection(s).



David Grace Estate Agents

71 High Street, Grantham - NG31 6NR

01476 833833 • sell@davidgrace.co.uk • www.davidgrace.co.uk

DavidGrace