

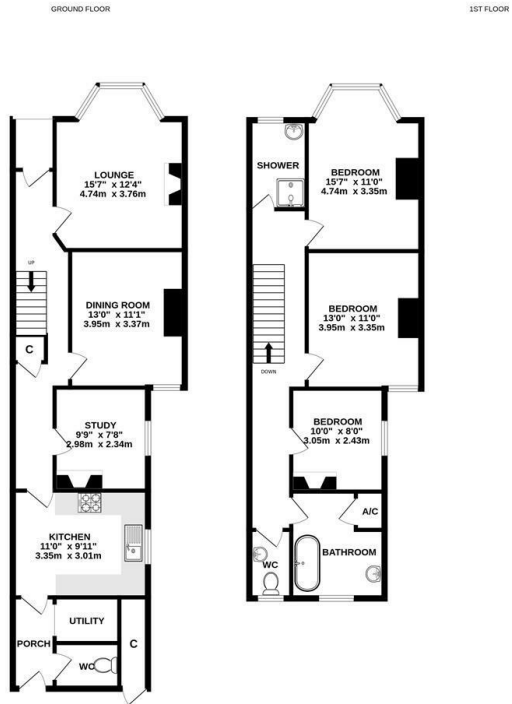
# KEYSTONE



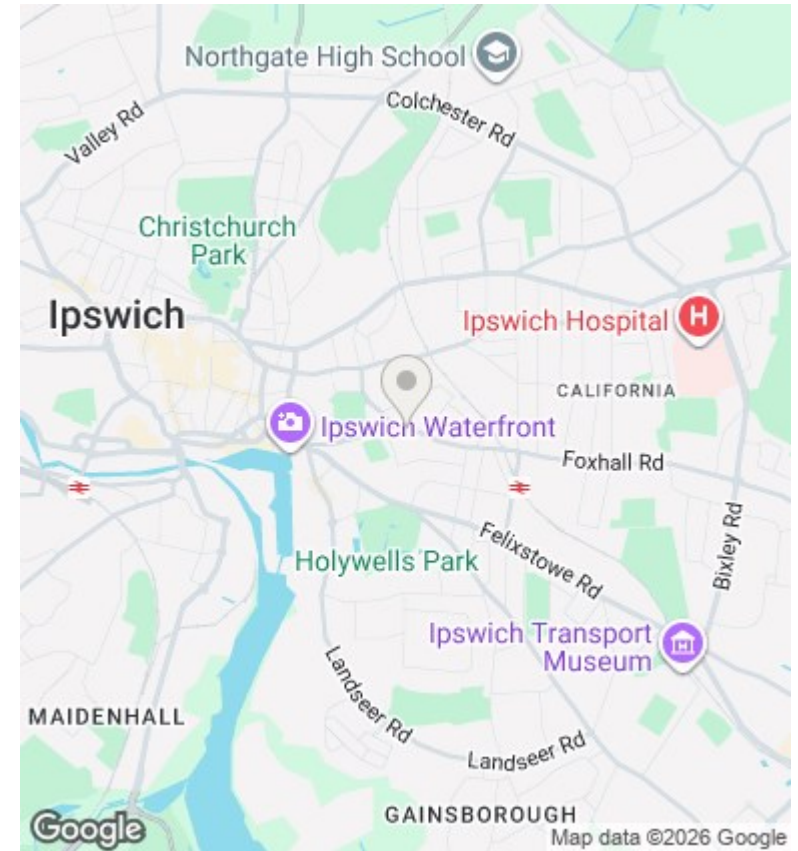
Foxhall Road, Ipswich, IP3 8HL

£1,395 Per Month

- Unfurnished three bedroom terraced house
- Two reception rooms AND a study
- First floor bathroom, shower room & WC
- Limited parking as double yellow lines to the front but on street parking can be found nearby.
- Foxhall Road, East Ipswich
- Fitted kitchen AND utility area
- Gas Central Heating/ Double Glazed
- Entrance hall
- Ground floor WC
- EPC Rating C



While every effort has been made to ensure the accuracy of the description contained here, measurements of doors, windows, floors and any other items are approximate and no responsibility is taken for any error, omission or misstatement. This plan is for illustrative purposes only and should be used in such by any prospective purchaser. The services, systems and appliances shown have not been tested and no guarantee will be given regarding their operation or efficiency can be given. Made with Metropax ©2025



## Directions

## Viewings

Viewings by arrangement only. Call 01473 221 399 to make an appointment.

## EPC Rating:

C

Energy Efficiency Rating		Current	Potential
<i>Very energy efficient - lower running costs</i>			
(92 plus) <b>A</b>			
(81-91) <b>B</b>			<b>85</b>
(69-80) <b>C</b>		<b>70</b>	
(55-68) <b>D</b>			
(39-54) <b>E</b>			
(21-38) <b>F</b>			
(1-20) <b>G</b>			
<i>Not energy efficient - higher running costs</i>			
<b>England &amp; Wales</b>		EU Directive 2002/91/EC	