



Connells

Kettering Road
Rothwell Kettering



Property Description

Situated in the heart of Rothwell, this beautifully presented two bedroom terraced property offers stylish, well-proportioned accommodation ideal for first-time buyers, couples or small families.

Upon entering the property, you are welcomed via the entrance hall leading through to a bright and spacious sitting room, offering a comfortable living space with plenty of natural light. To the rear of the property is an impressive recently refitted kitchen/diner finished to a sleek contemporary standard with ample worktop and storage space, making it perfect for both everyday living and entertaining. The layout comfortably accommodates a dining area and provides access to the rear garden.

Upstairs, the property offers two well-proportioned double bedrooms and is completed by a stylish family bathroom fitted with a modern three-piece suite.

Externally, the home benefits from both front and rear gardens, providing outdoor space ideal for relaxing.

A fantastic opportunity to acquire a move-in-ready home in a sought-after location close to local amenities, schools and transport links.

Agents Note

There is a easement on the title, please enquire with the branch.

Ground Floor

Lounge

Window to front, feature alcoves, carpet and plenty of natural light

Kitchen

Window and garden access to the rear, modern fitted kitchen with stylish units, breakfast bar island

First Floor

Bedroom One

Window to front, carpet flooring , radiator.

Bedroom Two

Window and radiator to the rear

Bathroom

Window to the rear, bath with mixer tap and shower attachment, wash hand basin, low level WC.

Externally

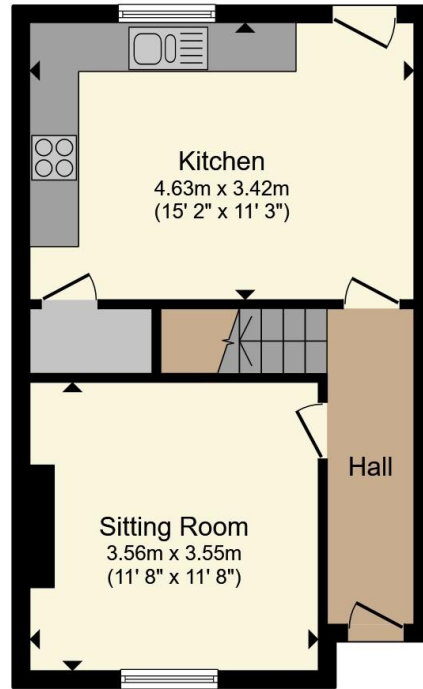
Garden

low-maintenance, fully enclosed rear garden featuring a gravelled seating area

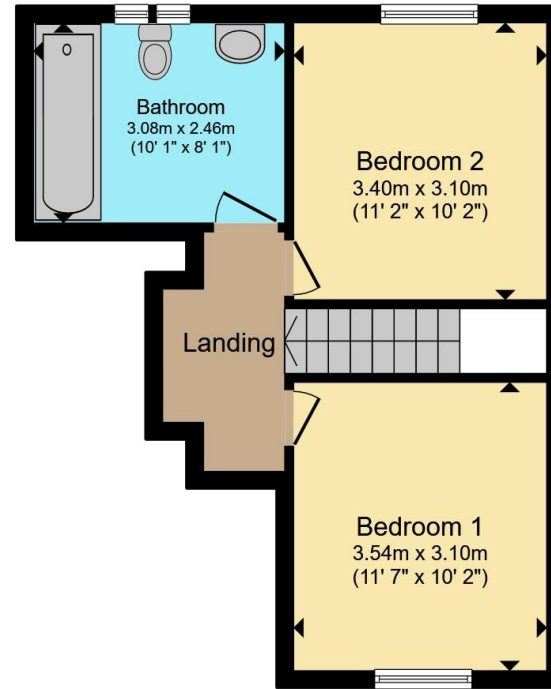








Ground Floor



First Floor

Total floor area 73.3 m² (789 sq.ft.) approx

This floor plan is for illustrative purposes only. It is not drawn to scale. Any measurements, floor areas (including any total floor area), openings and orientation are approximate. No details are guaranteed, they cannot be relied upon for any purpose and they do not form part of any agreement. No liability is taken for any error, omission or misstatement. A party must rely upon its own inspection(s). Powered by www.propertybox.io

Connells

To view this property please contact Connells on

T 01733 314 775
E peterborough@connells.co.uk

14 Cowgate
PETERBOROUGH PE1 1NA

EPC Rating: D Council Tax Band: A

Tenure: Freehold

view this property online connells.co.uk/Property/KTT308789



1. MONEY LAUNDERING REGULATIONS Intending purchasers will be asked to produce identification documentation at a later stage and we would ask for your co-operation in order that there will be no delay in agreeing the sale. 2. These particulars do not constitute part or all of an offer or contract. 3. The measurements indicated are supplied for guidance only and as such must be considered incorrect. Potential buyers are advised to recheck measurements before committing to any expense. 4. We have not tested any apparatus, equipment, fixtures, fittings or services and it is in the buyers interest to check the working condition of any appliances.

Connells Residential is registered in England and Wales under company number 1489613, Registered Office is Cumbria House, 16-20 Hockliffe Street, Leighton Buzzard, Bedfordshire, LU7 1GN. VAT Registration Number is 500 2481 05.

See all our properties at www.connells.co.uk | www.rightmove.co.uk | www.zoopla.co.uk

Property Ref: KTT308789 - 0004