



Fawn Crescent, Hedge End, Southampton, SO30 2QD



welcome to

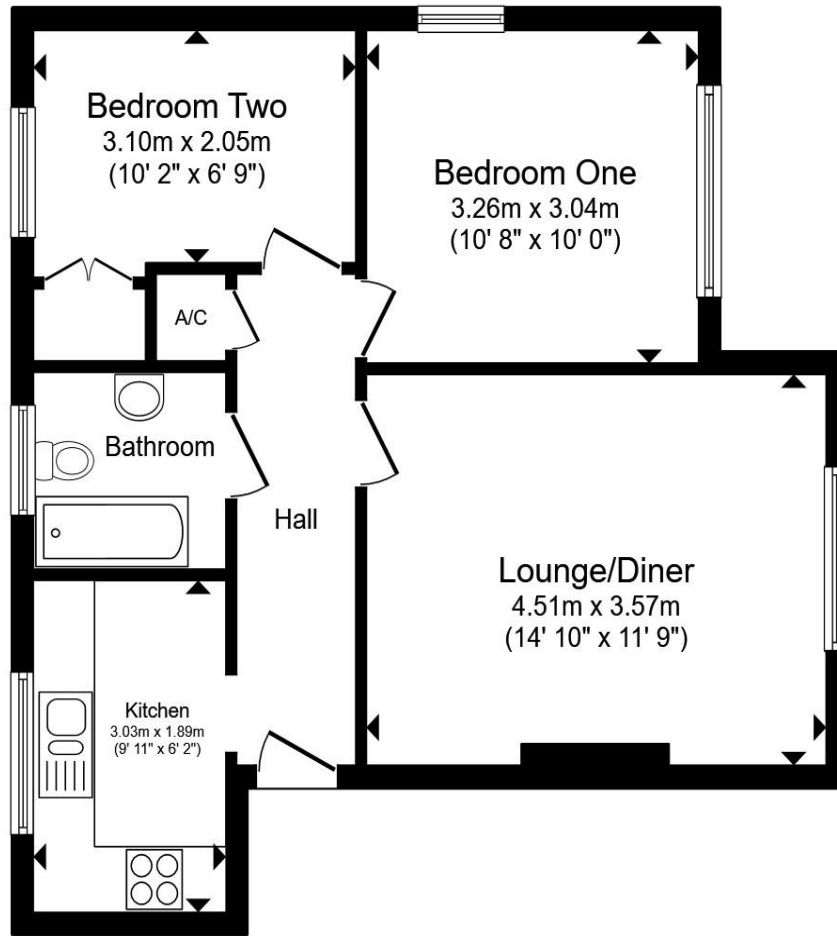
Fawn Crescent, Hedge End Southampton

A well-presented TWO-BEDROOM GROUND FLOOR FLAT – INVESTORS ONLY, located in the popular area of Hedge End. The property is finished to a modern standard throughout and benefits from double-glazed windows, helping to provide comfort and efficiency.

The accommodation includes a contemporary kitchen fitted with a built-in electric oven and hob, along with a stylish, fully tiled bathroom. Both bedrooms are well proportioned, offering a practical and appealing layout for tenants. Externally, the flat enjoys access to a communal garden and comes with allocated parking.

Conveniently positioned close to Hedge End amenities, including shops and local services, the property is also near green spaces ideal for leisure and recreation. Excellent transport links are available, with easy access to the M27, making this an attractive investment opportunity in a sought-after location.





Entrance Hall

Lounge

Kitchen

Bedroom 1

Bedroom 2

Bathroom

Rear Garden

Parking

Total floor area 50.8 m² (546 sq.ft.) approx

This floor plan is for illustrative purposes only. It is not drawn to scale. Any measurements, floor areas (including any total floor area), openings and orientation are approximate. No details are guaranteed, they cannot be relied upon for any purpose and they do not form part of any agreement. No liability is taken for any error, omission or misstatement. A party must rely upon its own inspection(s). Powered by www.propertybox.io



welcome to

Fawn Crescent, Hedge End Southampton

- INVESTORS ONLY
- Two Bedrooms
- Communal Garden
- Allocated Parking
- Good Links to M27

Tenure: Leasehold EPC Rating: C

Council Tax Band: B Service Charge: 962.00

Ground Rent: 150.00

This is a Leasehold property with details as follows; Term of Lease 99 years from 01 Jun 2004. Should you require further information please contact the branch. Please Note additional fees could be incurred for items such as Leasehold packs.

£185,000



Please note the marker reflects the postcode not the actual property

view this property online fox-and-sons.co.uk/Property/HEE106297



Property Ref:
HEE106297 - 0003

1. MONEY LAUNDERING REGULATIONS Intending purchasers will be asked to produce identification documentation at a later stage and we would ask for your co-operation in order that there is no delay in agreeing the sale. 2. These particulars do not constitute part or all of an offer or contract. 3. The measurements indicated are supplied for guidance only and as such must be considered incorrect. Potential buyers are advised to recheck measurements before committing to any expense. 4. We have not tested any apparatus, equipment, fixtures or services and it is in the buyers interest to check the working condition of any appliances. 5. Where an EPC, or a Home Report (Scotland only) is held for this property, it is available for inspection at the branch by appointment. If you require a printed version of a Home Report, you will need to pay a reasonable production charge reflecting printing and other costs. 6. We are not able to offer an opinion either written or verbal on the content of these reports and this must be obtained from your legal representative. 7. Whilst we take care in preparing these reports, a buyer should ensure that his/her legal representative confirms as soon as possible all matters relating to title including the extent and boundaries of the property and other important matters before exchange of contracts.

Fox & Sons is a trading name of Sequence (UK) Limited which is registered in England and Wales under company number 4268443, Registered Office is Cumbria House, 16-20 Hockliffe Street, Leighton Buzzard, Bedfordshire, LU7 1GN. VAT Registration Number is 500 2481 05.


fox & sons



01489 785269



HedgeEnd@fox-and-sons.co.uk



Stirling House, 5 St. Johns Road, Hedge End,
SOUTHAMPTON, Hampshire, SO30 4AA



fox-and-sons.co.uk