



## Darwin Road, W5

£500,000

**\*\*Offers in Excess\*\***

A spacious first floor three bedroom maisonette located in this popular spot in South Ealing which benefits from a private entrance.

Share of freehold approved planning permission to convert the loft and add two further bedrooms.

Situated close to both Brentford Overground station for Waterloo and Northfields station for the Piccadilly line.

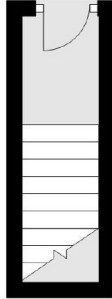
Offered in good condition and with no onward chain.

### Features

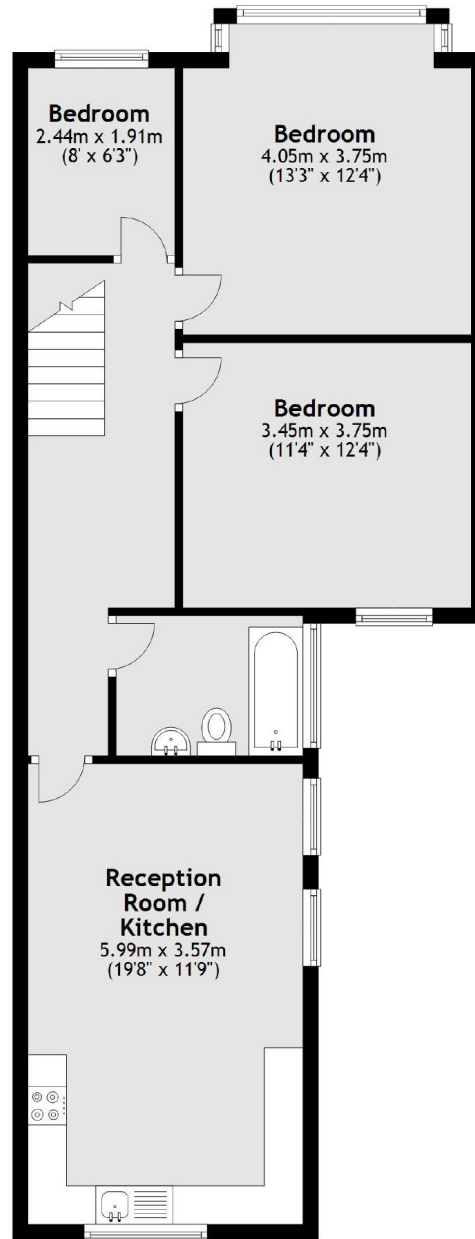
Edwardian Maisonette  
Three Bedrooms  
Share of Freehold  
Good Condition  
Chain Free  
Approved plan for loft conversion

Darwin Road,  
London, W5

Ground Floor



First Floor



Total area: approx. 74.1 sq. metres (797.8 sq. feet)