

Living
made
better

Adriatic Apartments
Royal Victoria Dock, E16 1BS



£1,750 PCM

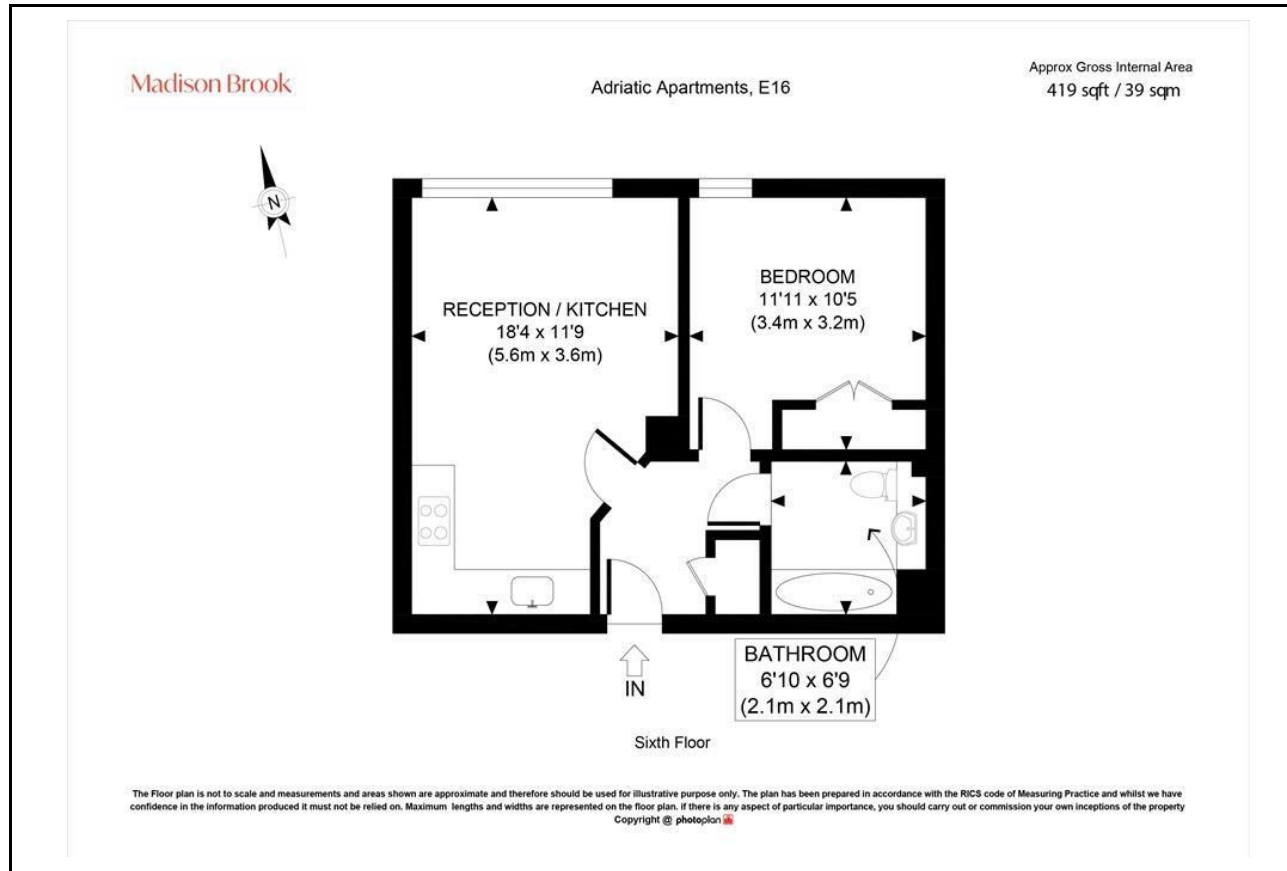
Adriatic Apartments, Royal Victoria Dock, E16 1BS

Madison Brook

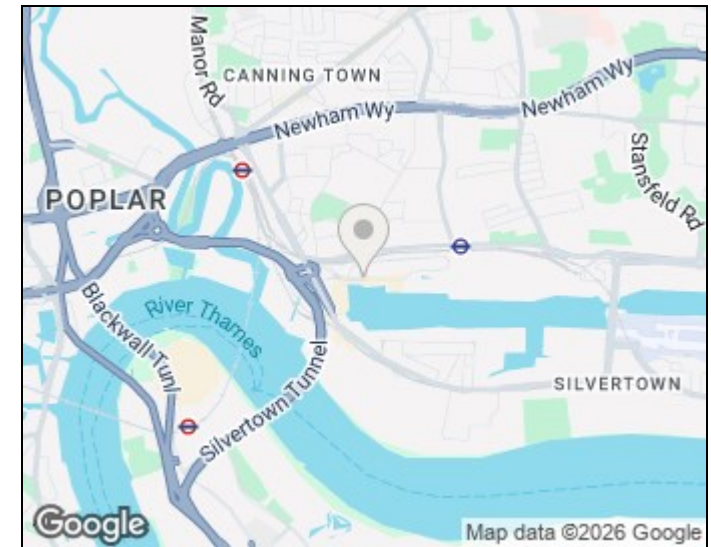
Property Summary

Situated on the 6th floor of a dock-side development, this bright and modern one bedroomed apartment is perfectly situated for swift access into the centre of Canary Wharf. The property comprises spacious reception room that is flooded with natural light through floor-to-ceiling windows, a stylish fitted kitchen with sleek black units, master bedroom, stylish bathroom, communal gymnasium, 24hr concierge and landscaped gardens. Adriatic Apartments is ideally placed for using a wide range of local amenities. Local transport links include Custom House Station (DLR) and a selection of useful A roads for access into the City and Canary Wharf.

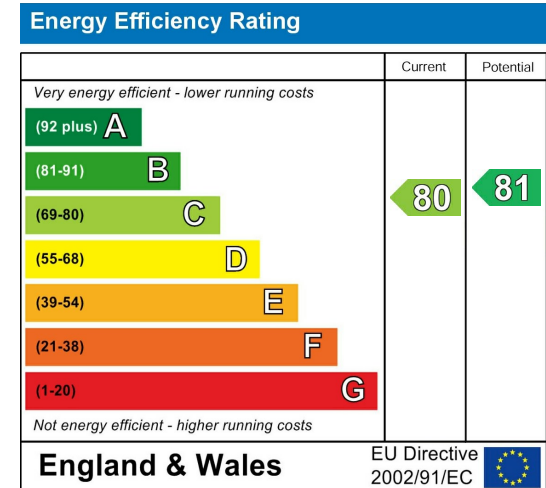
Floorplan



Area Map



Energy Efficiency Graph



These particulars, whilst believed to be accurate are set out as a general outline only for guidance and do not constitute any part of an offer or contract. Intending purchasers should not rely on them as statements of representation of fact, but must satisfy themselves by inspection or otherwise as to their accuracy. No person in this firm's employment has the authority to make or give any representation or warranty in respect of the property.

Unit B 20 Western Gateway, Royal Victoria
Dock, London, E16 1BS
Tel: 020 3946 6000 Email:
docklands@madisonbrook.com
<https://madisonbrook.com/>