



**Ethelbert Road, SW20**

**£1,295,000**

**Dexters**



## Ethelbert Road, SW20

An end of terrace, fully sandblasted and re-pointed period home, offering four double bedrooms and three bathrooms. The house has been taken back to brick and refurbished, with a south facing garden.

The front reception room is finished to a superb standard, complete with a modern wood burner and plantation shutters. The hallway leads to the rear of the house where an expansive reception/ kitchen offer the perfect location for parties, or the family to come together after a busy day. There is also side access to the kitchen and French doors to the south facing garden.

The first floor has been arranged to offer three near equally sized bedrooms, two of which have built in wardrobes and two modern bathrooms, to give flexibility of usage to all three bedrooms.

The loft has been converted expertly to offer maximum bedrooms and bathroom space, whilst offering a cleverly designed usage of space in the eaves, complete with a walk in wardrobe style area and expansive storage.

Located within close proximity to four stations, and just a few minutes away from some of the best schools in Wimbledon, including Kings and Ursuline. Wimbledon Common/Village, are just a short stroll away.

### Features

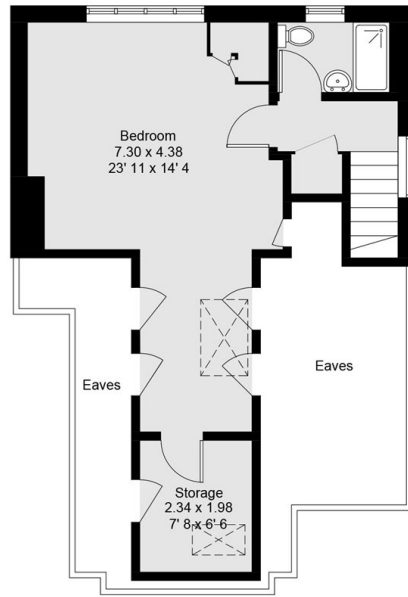
- Four Double Bedrooms
- Three Bathrooms
- End of Terrace
- Sandblast And Re-Pointed
- Open Plan Kitchen
- South Facing Garden



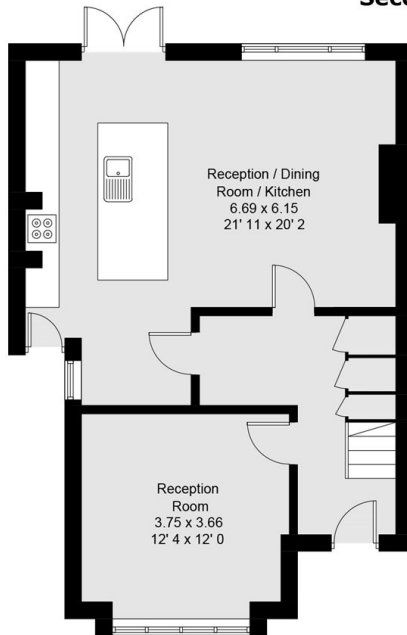




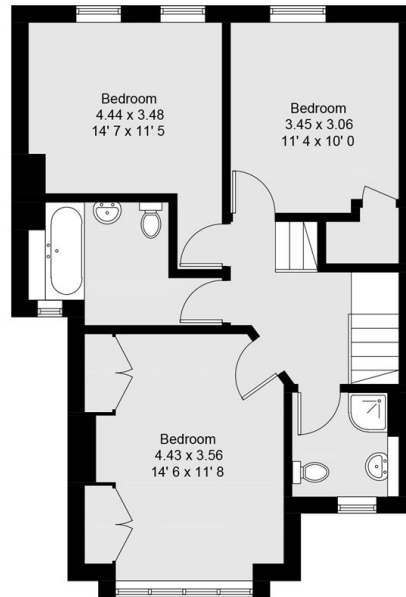
# Ethelbert Road, London, SW20



**Second Floor**



**Ground Floor**



**First Floor**

Approximate Gross Internal Area = 1517 sq ft / 140.9 sq m  
(Excluding Reduced Headroom / Eaves Storage)