



**Putney Park Lane, SW15**  
**£825,000**

**Dexters**



## Putney Park Lane, SW15

A beautifully presented three double bedroom period home located on the popular Putney Park Lane, offering well-balanced accommodation of approximately 875 sq. Ft.

The ground floor features a bright open-plan kitchen/dining room, extended to the rear and flooded with natural light from skylights and full-width bi-folding doors opening onto the private west facing garden. The modern kitchen includes a central peninsula and integrated appliances, making the space ideal for both everyday living and entertaining. The whole of the ground floor benefits from underfloor heating as well as the bathroom. A separate front bedroom/ reception room provides a comfortable and versatile living area, complemented by a downstairs WC and separate laundry/ boot room.

Upstairs are two generous double bedrooms and a modern family bathroom and the whole property has been triple glazed.

The property is ideally positioned close to Putney Heath and Richmond Park, with the shops, cafés and restaurants of Putney High Street nearby. Putney mainline station offers direct links into Waterloo, while East Putney Underground (District Line) and excellent bus routes provide easy access across London.

### Features

875sq.ft

Three Bedrooms

West Facing Garden

Freehold

W/C

Recently Renovated





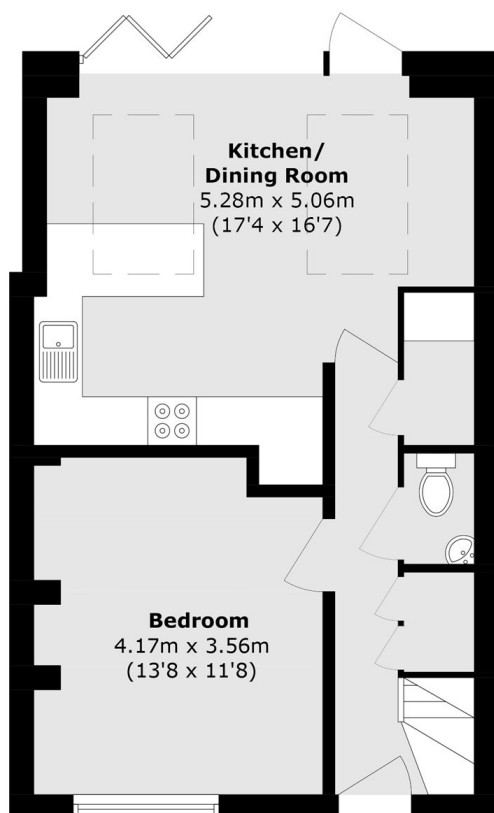




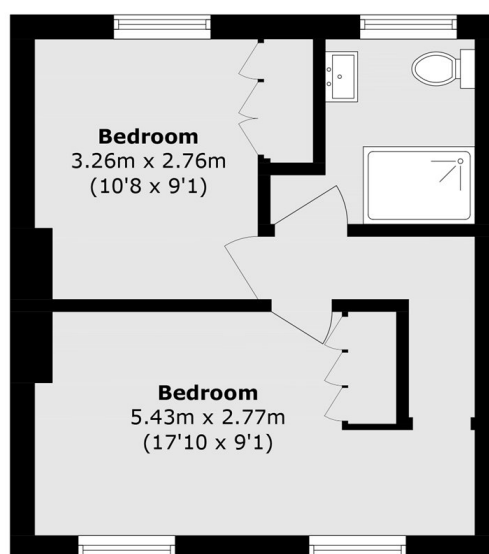




# Putney Park Lane, London, SW15



**Ground Floor**



**First Floor**

Total area (approx.): 81.3 sq. m (875.1 sq. ft)