



Guide Price
£290,000

Freehold

2x  1x  1x 

**Knatchbull Row, Plain
Road, Smeth, Ashford,
Kent, TN25**

OVER 60?

Secure this property
for up to **59% less!**

Wards
Helping you move forwards



Main features

- Detached home office / studio
- Off road parking for two vehicles
- Large kitchen/dining room overlooking garden
- Sought after village location
- Pretty, sunny rear garden
- Lounge with impressive fireplace

Accommodation

GROUND FLOOR

Entrance Hall

Lounge: 21'1" x 12'1" (6.43m x 3.69m)

Bathroom

Kitchen/Dining Room: 16'2" x 11'8" (4.93m x 3.56m)

FIRST FLOOR

Landing

Bedroom 2: 9'1" x 8'0" (2.77m x 2.44m)

Bedroom 1: 12'11" x 12'1" (3.94m x 3.69m)

OUTSIDE

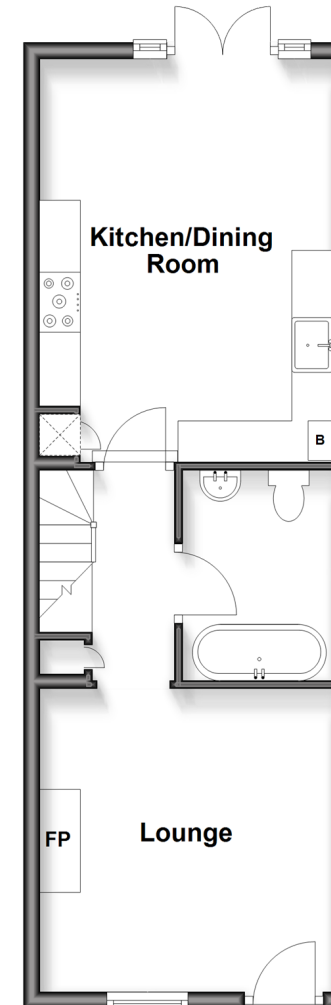
Front and Rear Garden

Driveway

Out building : 11'3" x 7'4" (3.43m x 2.24m)

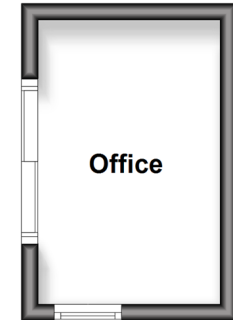
Split Level Ground Floor

Approx. 40.7 sq. metres (437.9 sq. feet)



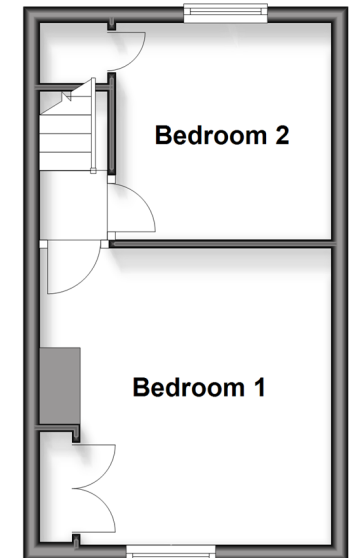
Outbuilding

Approx. 7.7 sq. metres (83.0 sq. feet)



Split Level First Floor

Approx. 22.8 sq. metres (245.0 sq. feet)



Call Ashford - 01233 639531 ■ wardsof Kent.co.uk

- Legal advice should be taken to verify fixtures/fittings, planning, alterations and/or lease details
- Appliances & services are untested, dimensions are approximate and floor plans are not to scale
- Through a Homewise Home For Life Plan people aged 60+ can secure this property for up to 59% less, by purchasing a Lifetime Lease



12825091/20260217/JJ/JRB