



Park Road, NW8

£2,307 Per week

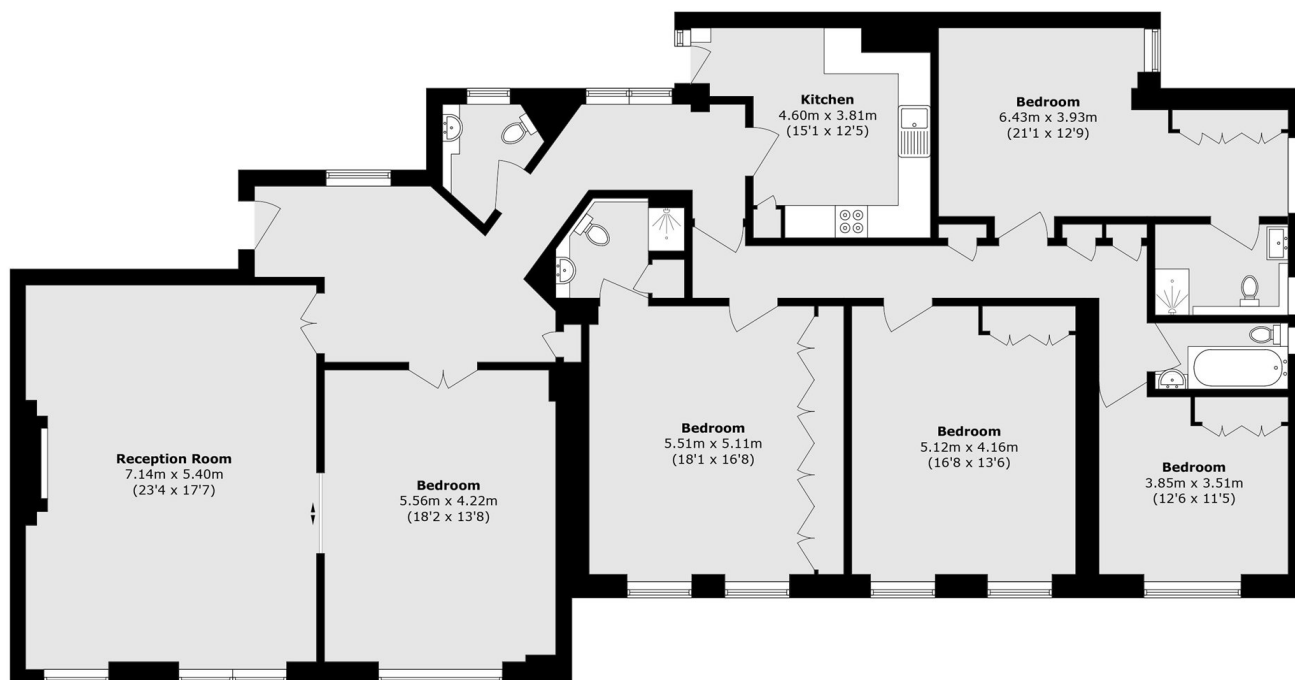
A bright four bedroom apartment set on the first floor within one of St John's Wood most prestigious of purpose built apartment blocks. The property offers four bedrooms, three bathrooms, with two being en-suites, a spacious double reception and dining room and a fully fitted separate kitchen.

Abbey Lodge is ideally located less than half a mile to Baker Street Underground Station and just over half a mile to St John's Wood Underground Station.

Features

- Four Bedrooms
- Three Bathrooms
- First Floor Apartment
- Communal Garden
- 24 Hour Porter
- Communal Heating and Hot Water

Park Road, London, NW8



Total area (approx.): 216.1 sq. m (2326.1 sq. ft)