



**Winifred Road, Bearsted, Maidstone, Kent, ME15 8NR**  
**Offers In Excess Of £500,000**



**\*\*GUIDE PRICE £500,000 - £525,000\*\***Situated on a quiet and highly sought-after road in Bearsted, this beautifully extended semi-detached family home offers generous and versatile living space, perfectly suited to modern family life.

Set back behind a substantial driveway providing parking for up to four vehicles, the property makes an immediate impression. Upon entering, a welcoming and well-presented hallway leads to two of the four double bedrooms and a stylish family bathroom, before opening into the heart of the home.

The main living area is both elegant and inviting, featuring tasteful décor and a charming wood-burning stove. This space flows seamlessly into the dining area, where a vaulted ceiling with a Velux window creates a light and airy atmosphere. French doors open onto the garden, while an additional set connects to the well-equipped kitchen, which offers ample storage, generous work surfaces, and direct garden access.

Upstairs, the first floor hosts two further spacious double bedrooms along with a contemporary shower room, providing a flexible layout ideal for families or guests.

Externally, the landscaped rear garden has been thoughtfully designed for low maintenance without compromising on style. A standout feature is the versatile garden room—perfect as a home office, gym, playroom, or private retreat.

Homes of this quality and location are rarely available, making early viewing highly recommended. Tenure: Freehold. EPC Rating: C. Council Tax band: D.



**LOCATION:**

Bearsted benefits from excellent transport links via mainline train station, and the picturesque Village Green with a selection of popular pubs and restaurants is within walking distance. Easy access to the M20, A249 and M2 motorways. Superb Primary and Secondary schools. Leisure facilities include Bearsted golf, bowls and tennis clubs, whilst the beautiful grounds of both Leeds Castle and Mote Park with it's excellent leisure centre are also close by.

**ACCOMODATION:**

**GROUND FLOOR:**

- Hall
  - Sitting Area
  - Dining Area
  - Kitchen
  - Bathroom
  - Bedroom Three
  - Bedroom Four
- FIRST FLOOR:**
- Bedroom One

**Bedroom Two**

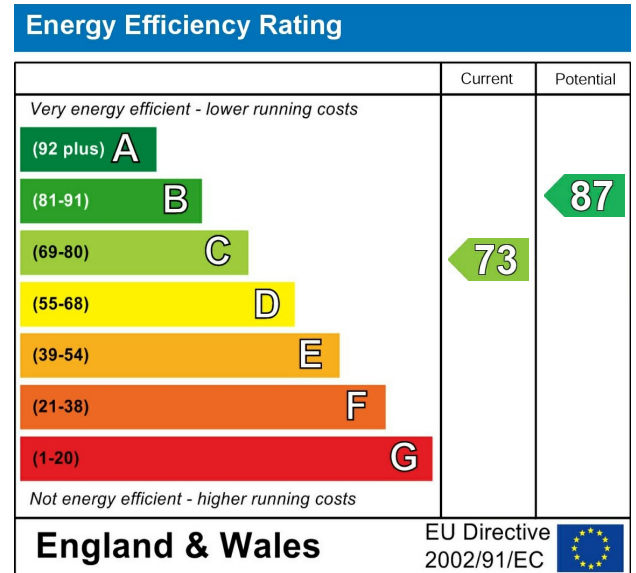
**Bathroom**

**EXTERNALLY:**

- Driveway
- Garden
- Cabin

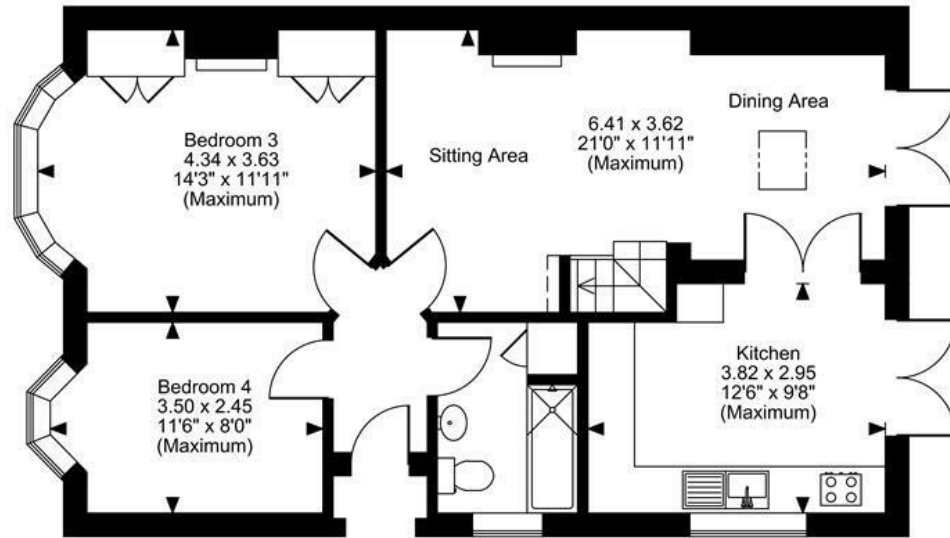
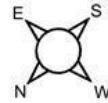
**VIEWING:**

Strictly by arrangement with the Agent's Bearsted Office, 132 Ashford Road, Bearsted, Maidstone, Kent ME14 4LX. Tel: 01622 739574.

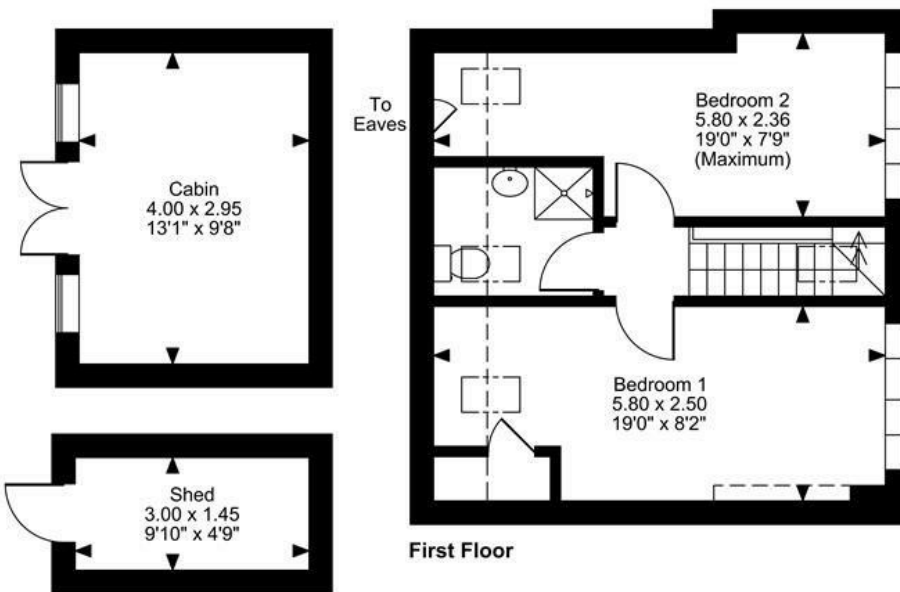


Page & Wells limited for themselves and for the vendors of this property whose agents they are give notice that: 1. These particulars do not constitute any part of, an offer or a contract. 2. All statements contained in these particulars as to this property are made without responsibility on the part of Page & Wells Limited or the Vendor. 3. None of the statements contained in these particulars as to the property is to be relied on as statements or representations of fact. 4. Any intending purchaser must satisfy himself by inspection or otherwise as to the correctness of each of the statements contained in these particulars. 5. The vendor does not make or give, and neither Page & Wells Limited nor any person in their employment has any authority to make or give any representation whatsoever in relation to this property. These particulars are supplied on the understanding that all negotiations are carried out throughout Page & Wells Limited. Properties with a reference prefixes EAA are whose which Page & Wells Limited disclose an interest in accordance with the provisions of the Estates Agents Act 1979

Winifred Road, Bearsted, Maidstone, Kent  
 Approximate Gross Internal Area  
 Main House = 982 Sq Ft/91 Sq M  
 Cabin and Shed = 174 Sq Ft/16 Sq M  
 Total = 1156 Sq Ft/107 Sq M



Ground Floor



First Floor

**FOR ILLUSTRATIVE PURPOSES ONLY - NOT TO SCALE**

The position & size of doors, windows, appliances and other features are approximate only.

□ □ □ □ Denotes restricted head height

© ehouse. Unauthorised reproduction prohibited. Drawing ref. dig/8682091/LCO

