



STRATHVILLE ROAD, SW18

£425,000

- Victorian ground floor flat
- Share of freehold
- Large private garden
- Chain free
- Sought after location
- Energy rating: D





ABOUT THE HOME

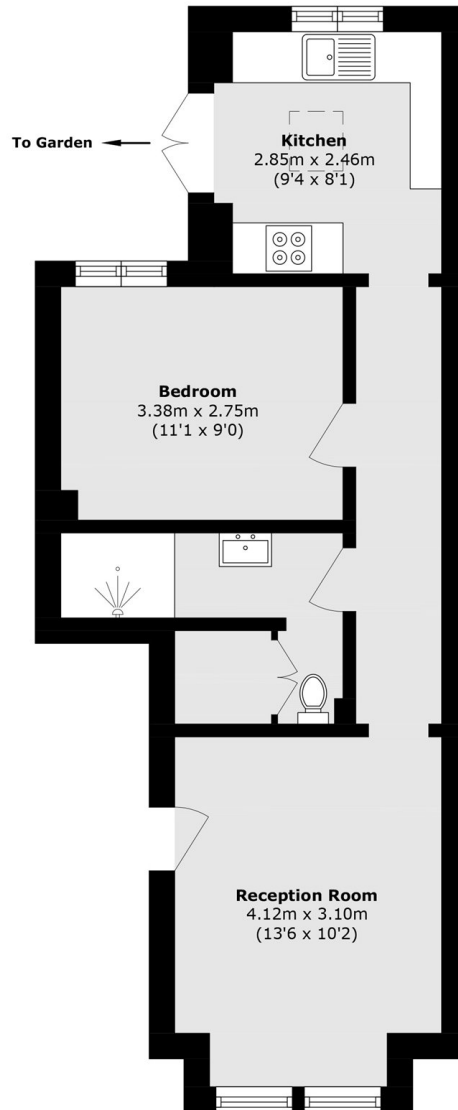
A beautifully presented one double bedroom Victorian conversion garden flat, ideally positioned on a sought-after residential road in Earlsfield.

The property comprises a bright and spacious reception room to the front, benefiting from large bay windows that flood the space with natural light. A modern bathroom is conveniently located off the hallway, leading through to a generous double bedroom positioned centrally within the flat. To the rear, a contemporary fitted kitchen features sleek units, ample worktop space and direct access to a substantial private garden, providing an excellent space for entertaining and outdoor dining.

Strathville Road is a much sought after road in Earlsfield, the property is well placed for some of the most desirable schools in the area and is a short walk from Earlsfield, Southfields and Wimbledon Park stations. Garratt Lane with its array of shops, bars and restaurants is within easy reach. The green open spaces of King George's Park are close by.







Total area (approx.): 42.1 sq. m (453.1 sq. ft)

JACKSONS EARLSFIELD

372-374 Garratt Lane,
Earlsfield, London, SW18 4ES
Sales: 020 8971 7979
Lettings: 020 8971 7070

Energy Rating: D We aim to make our particulars both accurate and reliable. However they are not guaranteed; nor do they form part of an offer or contract. If you require clarification on any points then please contact us, especially if you're traveling some distance to view. Please note that appliances and heating systems have not been tested and therefore no warranties can be given as to their good working order.