



PALACE GARDENS TERRACE, W8

£1,950,000

Two Bedrooms
Two Bathrooms
Split-Level Layout
Roof Terrace
Exclusive Address
Share of Freehold

@marshandparsons
marshandparsons.co.uk

MARSH &
PARSONS



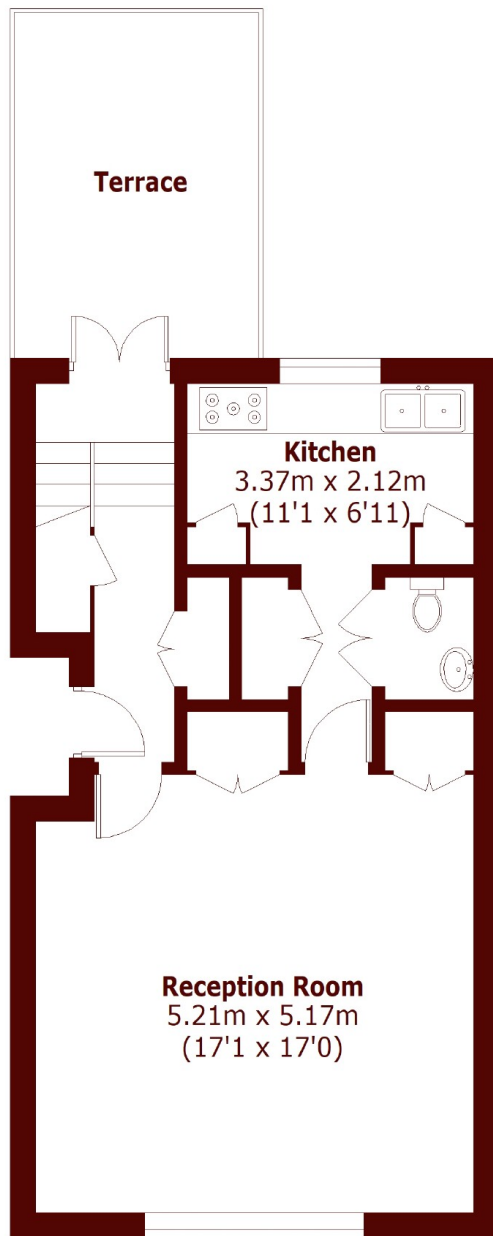
ABOUT THE PROPERTY

A rare opportunity to acquire this beautifully presented two-bedroom split-level maisonette with roof terrace, situated on arguably one of Kensington's best residential addresses.

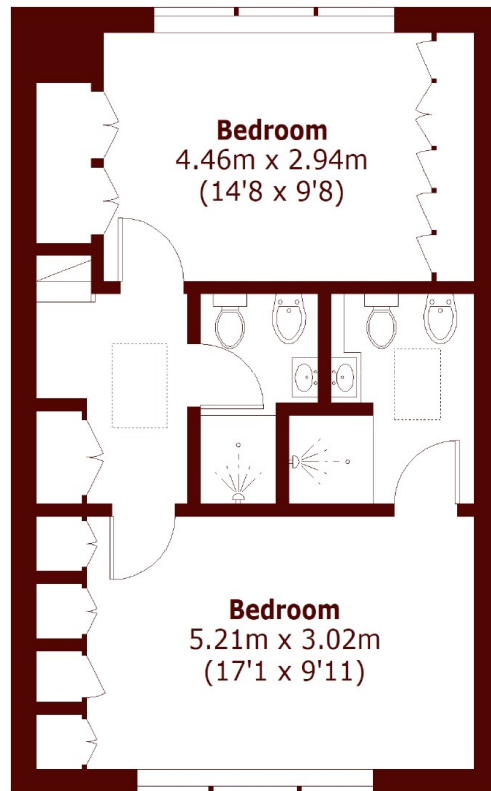
Palace Gardens Terrace is a beautiful cherry tree-lined street in prime Kensington and located moments from the amenities of Kensington Church Street, Notting Hill Gate and Kensington High Street. The green open spaces of Kensington Gardens and Hyde Park are within a short walk with the transport links at both Kensington High Street (District and Circle Line) and Notting Hill Gate (District, Circle and Central Line).



STEP INSIDE PALACE GARDENS TERRACE



Third Floor



Fourth Floor

Total area (approx.): 94.3 sq. m (1,014.3 sq. ft)
Terrace: 11.9 sq. m (128.0 sq. ft)

Kensington
020 7368 4450

Energy Rating: D We aim to make our particulars both accurate and reliable. However, they are not guaranteed; nor do they form part of an offer or contract. If you require clarification on any points then please contact us, especially if you're traveling some distance to view. Please note that appliances and heating systems have not been tested and therefore no warranties can be given as to their good working order

**MARSH &
PARSONS**