



Price

£1,350,000

Freehold

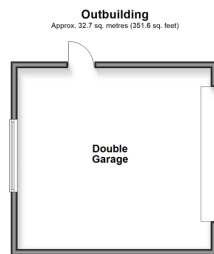
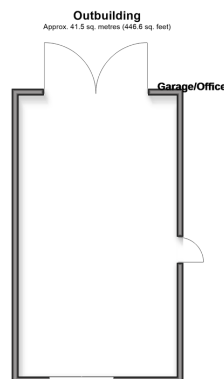
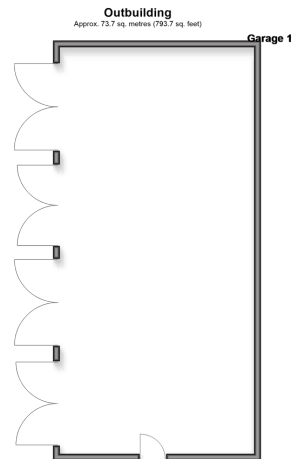
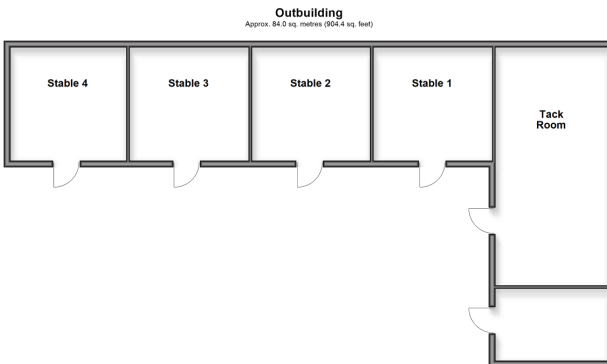
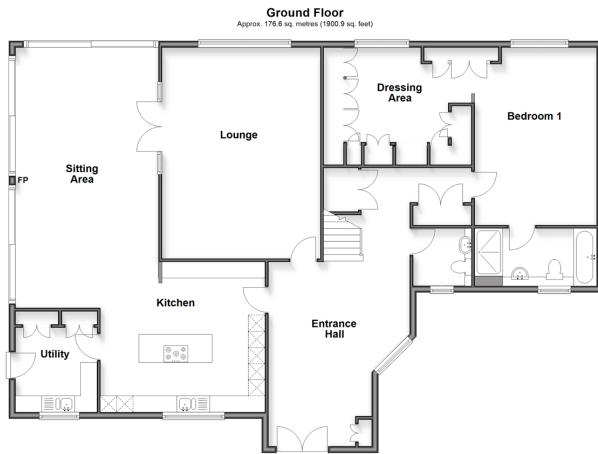
4x  4x  2x 

David Street, Harvel,
Meopham, Kent, DA13

OVER 60?

Secure this property
for up to **59% less!**

Wards
Helping you move forwards



Accommodation

GROUND FLOOR

Entrance Hall: 15'2 x 10'4 (4.63m x 3.15m)
 Cloakroom: 5'10 x 5'10 (1.78m x 1.78m)
 Lounge: 21'3 x 15'10 (6.48m x 4.83m)
 Sitting Area: 26'4 x 13'5 (8.03m x 4.09m)
 Kitchen: 16'5 x 15'1 (5.01m x 4.60m)
 Utility: 10'3 x 8'0 (3.13m x 2.44m)
 Bedroom 1: 17'10 x 11'9 (5.44m x 3.58m)
 Dressing Area: 13'0 x 11'11 (3.97m x 3.63m)
 Ensuite Shower Room: 12'2 x 5'9 (3.71m x 1.75m)

FIRST FLOOR

Landing
 Bedroom 2: 16'1 x 13'5 (4.91m x 4.09m)
 Ensuite Shower Room: 7'6 x 2'8 (2.29m x 0.81m)
 Bedroom 3: 16'3 x 12'0 (4.96m x 3.66m)
 Ensuite Shower Room: 9'4 x 6'9 (2.85m x 2.06m)
 Bedroom 4: 15'4 x 11'8 (4.68m x 3.56m)
 Bathroom: 7'1 x 7'0 (2.16m x 2.14m)

OUTBUILDINGS

4 x Stables
 Tack Room
 Hay Room
 Garage 1: 41'2 x 19'0 (12.56m x 5.80m)
 Garage/Office: 27'11 x 15'11 (8.51m x 4.85m)
 Double Garage: 18'8 x 18'2 (5.69m x 5.54m)

OUTSIDE

In and Out Driveway
 Front Garden
 Garage 2: 23'9 x 23'4 (7.24m x 7.12m)
 Rear Garden
 Sand School



Main features

- Impressive 4.18 acre level plot
- Open plan kitchen and lounge, beautifully finished with underfloor heating and log burner
- Equestrian facilities including a professionally laid sand school, 4 stables, dedicated tack room and hay store
- In and out driveway with a detached garage plus additional garages/outbuildings
- Idyllic rural setting, yet accessible to amenities

Nearest Schools

Primary and Secondary Schools: Culverstone Green Primary 1.0 miles, Vigo Village School 1.3 miles, Meopham Community Primary 1.8 miles, Meopham School 1.4 miles, Helen Allison School 1.8 miles, Cobham Hall 3.4 miles

Transport Information

Train Stations: Sole Street 2.3 miles, Meopham 2.5 miles, Halling 3.3 miles

Address

David Street, Harvel, Meopham, Kent, DA13

Directions

For directions to this property please contact us.



Wards
Helping you move forwards

Call Meopham Branch 01474 813100 ■ wardsofkent.co.uk



- Legal advice should be taken to verify fixtures/fittings, planning, alterations and/or lease details
- Appliances & services are untested, dimensions are approximate and floor plans are not to scale
- Through a Homewise Home For Life Plan people aged 60+ can secure this property for up to 59% less, by purchasing a Lifetime Lease

EPC RATING

| CURRENT: | POTENTIAL: |
|----------|------------|
| D(56) | C(75) |

13326030/20260306/SB/KD