



Luscombe Maye

Since 1873

Lower Idston, Nr Loddiswell, TQ7

6 5 4

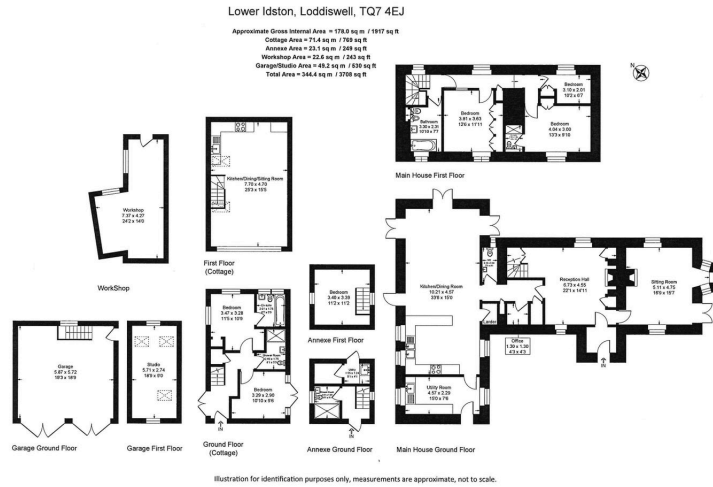


Lower Idston is a remarkable country property offering an exceptional lifestyle in a peaceful South Hams setting. Forming part of a small rural hamlet, the property enjoys an exceptional degree of privacy, with the house, gardens and grounds feeling wonderfully secluded. Combining a detached Georgian farmhouse, a detached two bedroom cottage, a useful annexe and approximately 6.25 acres of gardens, orchard and pasture, it presents a rare opportunity for multi-generational living, income generation or simply enjoying an outstanding family home.

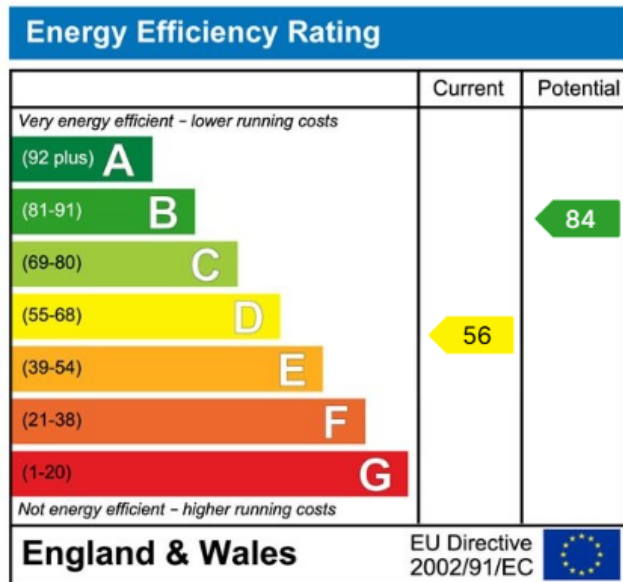
The main house dates from around 1750 and has been thoughtfully extended to complement the original architecture. Rich in character, the house blends period charm with the comforts of modern day living, including wood-burning stoves in both the reception hall and living room, underfloor heating and double glazing. The architect designed kitchen and dining space forms the heart of the home, opening onto the gardens and making the most of the property's elevated position. The triple aspect dining room and living room are both filled with natural light and enjoy delightful views across the surrounding gardens and countryside. Practical features include a utility room and ground floor cloakroom. Adjacent to the farmhouse is The Pump House, a one bedroom annexe providing flexible accommodation for guests, family members or home working. It also benefits from an additional utility room and shower room.

Hope Cottage is a beautifully presented detached barn conversion which can be used for family and friends or as a holiday let. Offering two double bedrooms, two bathrooms and bright open-plan living accommodation, it provides excellent ancillary accommodation or an income stream, together with its own private patio. The gardens and grounds are a particular feature of Lower Idston. Landscaped over many years, they include formal gardens, productive kitchen gardens, an orchard, woodland walks and pasture land. A stream forms the property's natural boundary within the valley below, although it is not included within the ownership. The land offers ample space for gardening, recreation or keeping animals. Further benefits include a detached double garage with studio above, a large workshop, extensive parking and easy access to nearby villages, the South Hams coastline.





- Detached Georgian farmhouse
- One-bedroom annexe
- Landscaped gardens and grounds
- Double garage with studio
- Peaceful South Hams location
- Detached two-bedroom cottage
- Approximately 6.25 acres
- Kitchen garden and pasture grounds
- Large workshop and parking
- No onward chain



Luscombe Maye
Since 1873



Use the QR code for further "Material Information" about this home

Luscombe Maye
Since 1873

Modbury:
 3 Church Street, Modbury, Ivybridge PL21 0QW
 01548 830831
 modbury@luscombemaye.com
 www.luscombemaye.com

Important Notice: Luscombe Maye gives notice that: 1. These particulars do not constitute an offer or contract or part thereof. 2. All descriptions, photographs and plans are for guidance only and should not be relied upon as statements or representations of fact. All measurements are approximate and not necessarily to scale. Any prospective purchaser must satisfy themselves of the correctness of the information within the particulars by inspection or otherwise. 3. Luscombe Maye does not have any authority to give any representations or warranties whatsoever in relation to this property (including but not limited to planning/building regulations), nor can it enter into any contract on behalf of the Vendor.