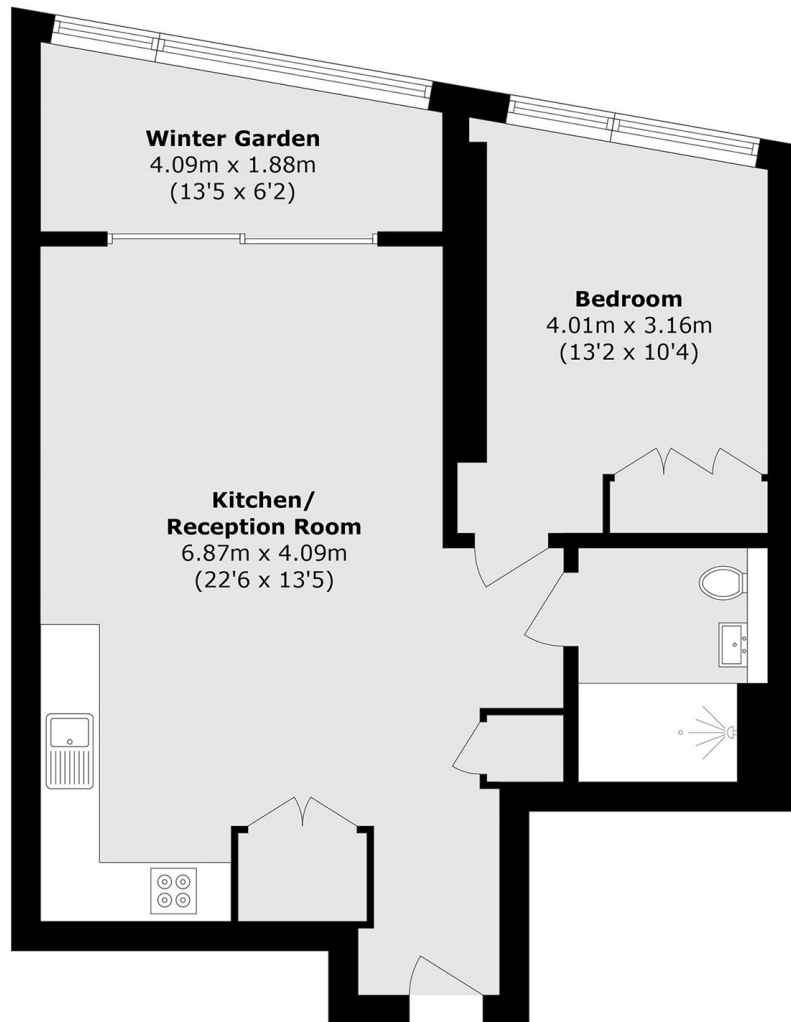


ELECTRIC BOULEVARD, SW11

£4,250 pcm

Set within Oakley House on Electric Boulevard, this beautifully appointed one-bedroom apartment enjoys a prime position in the vibrant Battersea Power Station development.

- Open-plan living
- Winter garden
- Floor-to-ceiling windows
- Built-in wardrobes



Total area (approx.): 58.2 sq. m (626.4 sq. ft)
(Including Winter Garden)

LiFE RESIDENTIAL

11 Flagstaff House, London,
SW8 2LZ

Sales: 020 7476 1408

Lettings: 020 7582 7989

Energy Rating: . We aim to make our particulars both accurate and reliable. However they are not guaranteed; nor do they form part of an offer or contract. If you require clarification on any points then please contact us, especially if you're traveling some distance to view. Please note that appliances and heating systems have not been tested and therefore no warranties can be given as to their good working order.