



CLAPHAM COMMON NORTH SIDE, £375,000

Top Floor Studio Flat
Communal Gardens
Views Over Clapham Common
Flooded With Natural Light
Art-Deco Style Building
Energy Rating: D

@marshandparsons
marshandparsons.co.uk

MARSH &
PARSONS



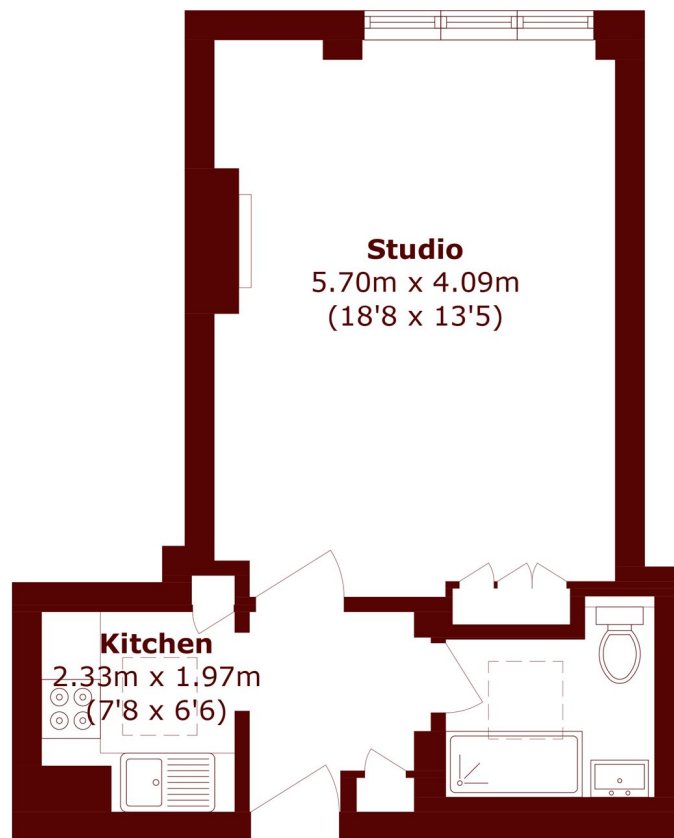
ABOUT THE PROPERTY

A beautifully presented top-floor studio apartment, flooded with natural light and offering stunning views over Clapham Common. Benefiting from a communal garden and offered chain free.

Okeover Manor is a distinctive Art-Deco style residential building located on Clapham Common North Side, overlooking the open green spaces of Clapham Common. Originally constructed in the 1930s, the property combines period charm with practical living and offers spacious communal gardens and views over the Common. Additional highlights include the use of a separate storage unit within the basement of the building, communal hot water and close proximity to the cafés, bars, and



STEP INSIDE CLAPHAM COMMON NORTH SIDE



Total area (approx.): 36.8 sq. m (396.1 sq. ft)

Clapham
020 7733 4595

Energy Rating: D We aim to make our particulars both accurate and reliable. However, they are not guaranteed; nor do they form part of an offer or contract. If you require clarification on any points then please contact us, especially if you're traveling some distance to view. Please note that appliances and heating systems have not been tested and therefore no warranties can be given as to their good working order

**MARSH &
PARSONS**